

26

REFERENCE PLAN OF STATUTORY RIGHT-OF-WAY
IN LOTS 10, 15 and 16, PLAN 25498,
D. L. 751, CARIBOO DISTRICT.

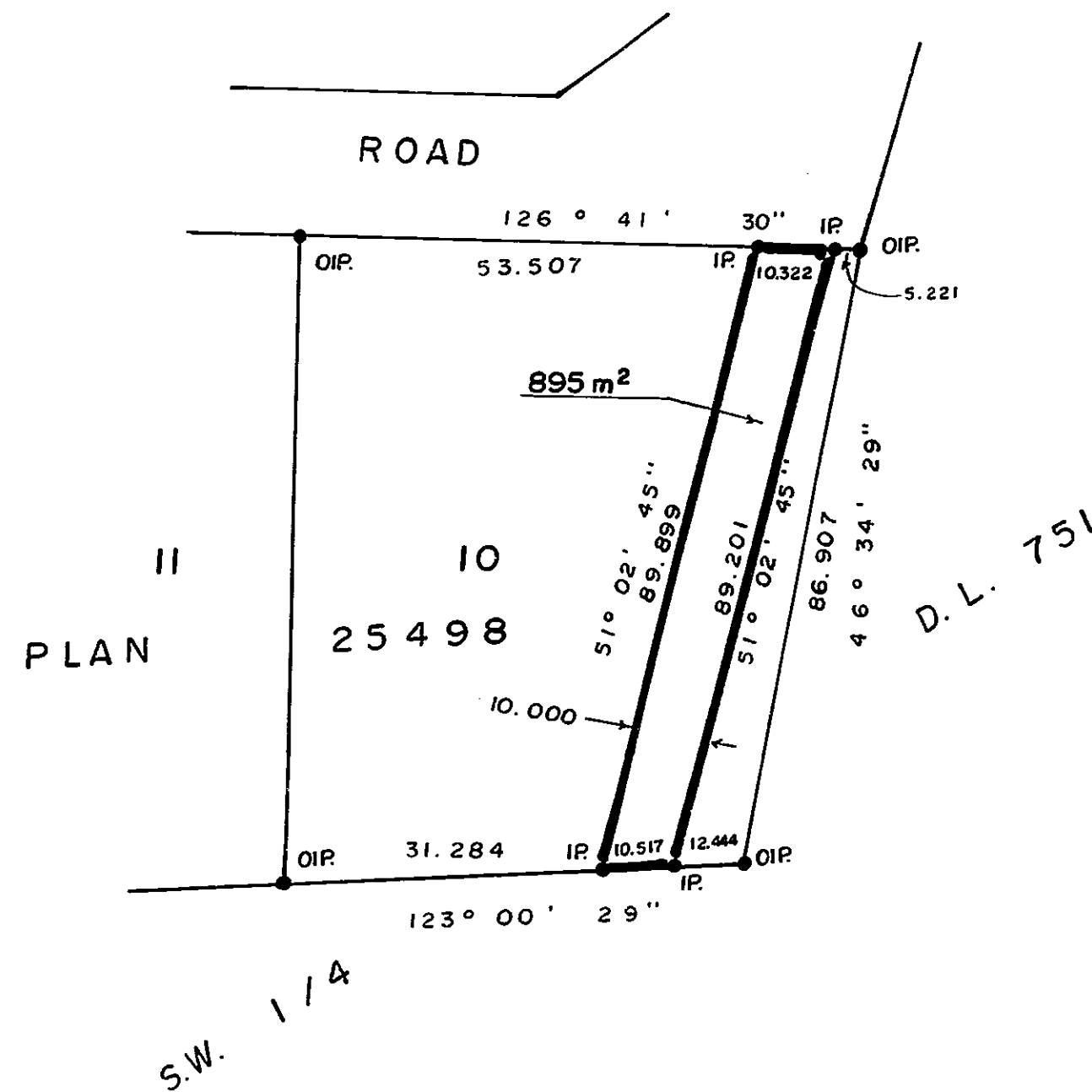
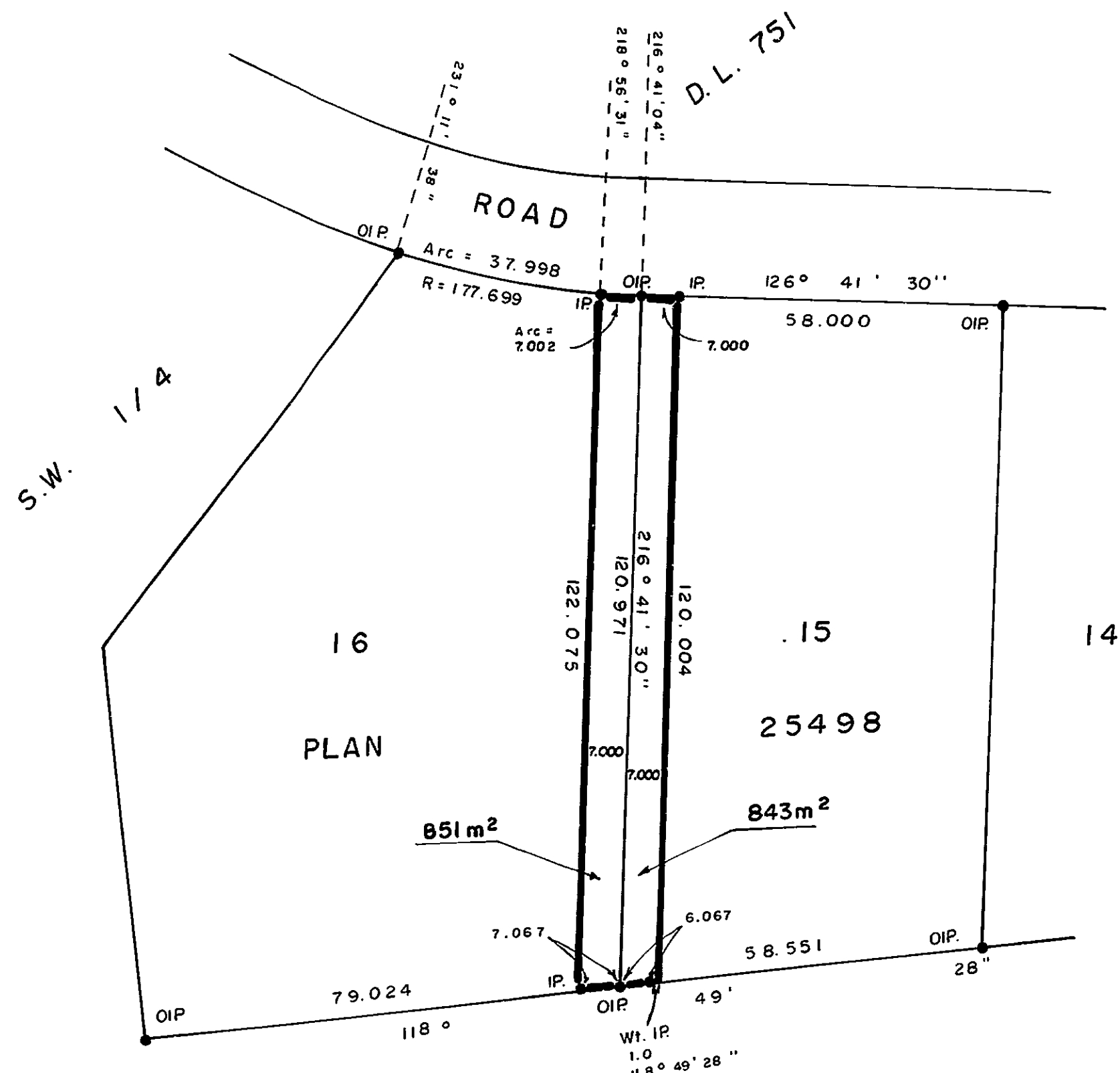
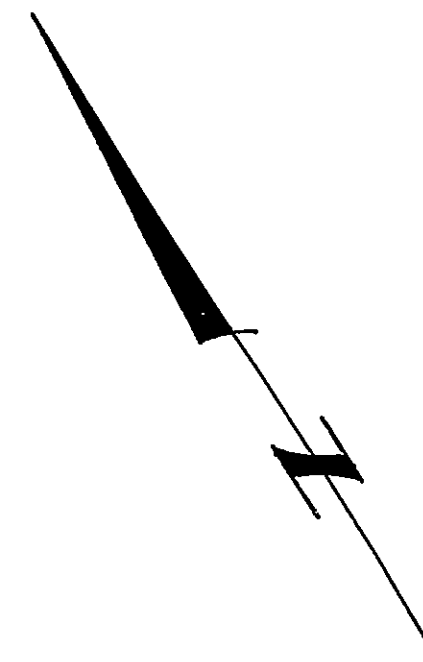
Scale: 1:1000

ALL DISTANCES ARE IN METRES

PLAN No. 25691

DEPOSITED IN THE LAND TITLE OFFICE AT
PRINCE GEORGE THIS 18th DAY OF February, 1980

E.D. Raven
REGISTRAR
per G.M.



BOOK OF REFERENCE	
Description	Area
LOT 10, PLAN 25498	895 m ²
LOT 15, PLAN 25498	843 m ²
LOT 16, PLAN 25498	851 m ²

BEARINGS ARE ASTRONOMIC DERIVED FROM
PLAN 25498.

●IP.....STANDARD IRON POST.
O..... DENOTES "OLD"
Wt..... DENOTES "WITNESS"

I, V. BARTELL, A BRITISH COLUMBIA LAND
SURVEYOR, OF PRINCE GEORGE IN BRITISH
COLUMBIA, CERTIFY THAT I WAS PRESENT AT AND
PERSONALLY SUPERINTENDED THE SURVEY
REPRESENTED BY THIS PLAN, AND THAT THE
SURVEY AND PLAN ARE CORRECT. THE SAID
SURVEY WAS COMPLETED ON THE 29 DAY OF
JANUARY, 1980.

V. Bartell
V. BARTELL, B.C.L.S.

McWILLIAM, WHYTE, GOBLE & ASSOCIATES,
B.C. LAND SURVEYORS,
PRINCE GEORGE - KAMLOOPS - SMITHERS.

REF NO 80012.