

PLOTTED (CK)

PLAN NO. 25587
DEPOSITED IN THE LAND REGISTRY
OFFICE AT PRINCE GEORGE ON THE 4
DAY OF Jan 1980

E.J. Raven
REGISTRAR

PLAN OF SUBDIVISION OF PARTS OF
LOTS 23 & 24 PLAN 11647 D.L. 633
CARIBOO DISTRICT
SCALE: 1" = 200'

BEARINGS ARE ASTRONOMIC DERIVED FROM 9566

- LEGEND:
- PP --- STANDARD PIPE POST
 - IP --- STANDARD IRON POST
 - --- DENOTING "OLD"

I, V BARTELL OF THE CITY OF PRINCE GEORGE BRITISH COLUMBIA LAND SURVEYOR MAKE OATH AND SAY THAT I WAS PRESENT AT AND DID PERSONALLY SUPERINTEND THE SURVEY REPRESENTED BY THIS PLAN AND THAT THE SURVEY AND PLAN ARE CORRECT. THE SAID SURVEY WAS COMPLETED ON THE 5 DAY OF June 1979

Victoria Bartell
V. BARTELL B.C.L.S.

SWORN BEFORE ME AT PRINCE GEORGE THIS 3 DAY OF August 1979

J. N. ...
A COMMISSIONER FOR TAKING AFFIDAVITS FOR
BRITISH COLUMBIA

APPROVED UNDER THE LAND REGISTRY ACT ON THE 25 DAY OF SEPT. 1979

C. E. Olsh
APPROVING OFFICER
City of Prince George
Reapproved Jan 4, 1980 eloh

OWNER Bruce North

Lanni Rose North
WITNESS Victoria Bartell
ADDRESS: 1575-5th AVENUE
PRINCE GEORGE, B.C. V2L 3L9
OCCUPATION: B.C. LAND SURVEYOR.

THIS PLAN LIES WITHIN THE FRASER FORT GEORGE
REGIONAL DISTRICT

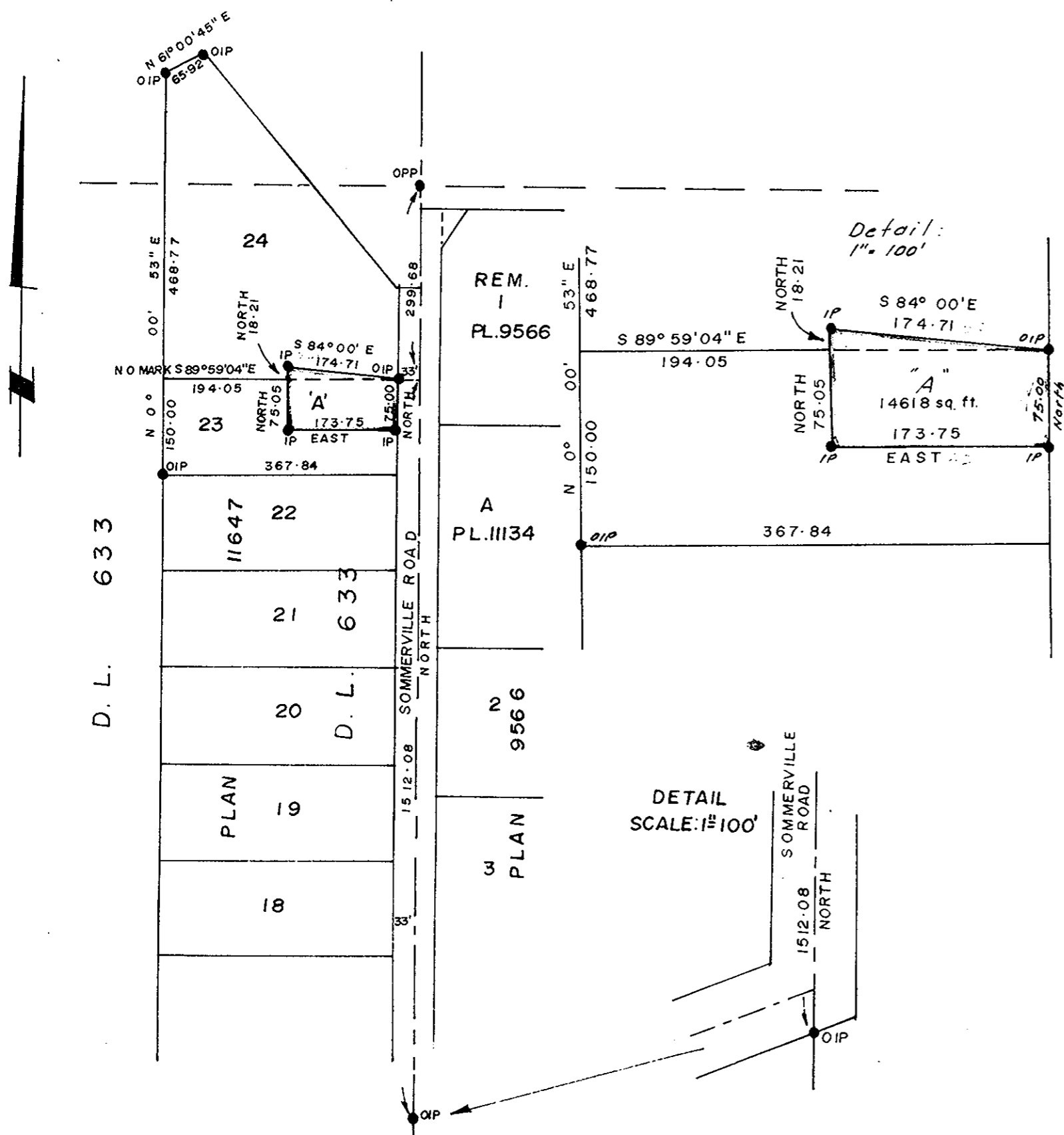
REAPPROVED UNDER THE LAND TITLE ACT
THIS ___ DAY OF ___ 19___

APPROVING OFFICER
CITY OF PRINCE GEORGE

Mc WILLIAM-WHYTE-GOBLE & ASSOCIATES
B.C. LAND SURVEYORS
PRINCE GEORGE-KAMLOOPS-SMITHERS

REF. NO. 79074

D. L. 633



D. L. 633

11647

21

20

19

18

SOMMERVILLE ROAD

NORTH

1512.08

33'

REM. 1 PL.9566

A PL.11134

2 PL.9566

3 PLAN

DETAIL SCALE: 1" = 100'

SOMMERVILLE ROAD

NORTH

1512.08

OIP

Detail: 1" = 100'

NORTH 18.21

S 84° 00' E 174.71

NORTH 75.05

EAST 173.75

NORTH 75.00

EAST 173.75

S 89° 59' 04" E 194.05

N 0° 00' 53" E 468.77

N 0° 00' 53" E 468.77

N 0° 00' 53" E 468.77

N 0° 00' 53" E 468.77

N 0° 00' 53" E 468.77

N 0° 00' 53" E 468.77

N 0° 00' 53" E 468.77

N 61° 00' 45" E 65.92

468.77

194.05

150.00

367.84

1512.08

299.68

174.71

173.75

173.75

NORTH 18.21

S 84° 00' E 174.71

NORTH 75.05

EAST 173.75

NORTH 75.00

EAST 173.75

S 89° 59' 04" E 194.05

N 0° 00' 53" E 468.77

N 0° 00' 53" E 468.77

N 0° 00' 53" E 468.77

N 0° 00' 53" E 468.77

N 0° 00' 53" E 468.77

N 0° 00' 53" E 468.77

N 0° 00' 53" E 468.77

N 0° 00' 53" E 468.77

N 0° 00' 53" E 468.77

N 0° 00' 53" E 468.77

N 0° 00' 53" E 468.77

N 0° 00' 53" E 468.77

N 0° 00' 53" E 468.77

N 0° 00' 53" E 468.77

N 0° 00' 53" E 468.77

N 0° 00' 53" E 468.77

N 0° 00' 53" E 468.77

N 0° 00' 53" E 468.77

N 0° 00' 53" E 468.77

N 0° 00' 53" E 468.77

N 0° 00' 53" E 468.77

N 0° 00' 53" E 468.77

N 0° 00' 53" E 468.77

N 0° 00' 53" E 468.77

N 0° 00' 53" E 468.77

N 0° 00' 53" E 468.77

N 0° 00' 53" E 468.77

N 0° 00' 53" E 468.77

N 0° 00' 53" E 468.77

N 0° 00' 53" E 468.77

N 0° 00' 53" E 468.77

N 0° 00' 53" E 468.77

N 0° 00' 53" E 468.77

N 0° 00' 53" E 468.77

N 0° 00' 53" E 468.77

N 0° 00' 53" E 468.77

N 0° 00' 53" E 468.77

N 0° 00' 53" E 468.77

N 0° 00' 53" E 468.77

N 0° 00' 53" E 468.77

N 0° 00' 53" E 468.77

N 0° 00' 53" E 468.77

N 0° 00' 53" E 468.77

N 0° 00' 53" E 468.77

N 0° 00' 53" E 468.77

N 0° 00' 53" E 468.77

N 0° 00' 53" E 468.77

N 0° 00' 53" E 468.77

N 0° 00' 53" E 468.77

N 0° 00' 53" E 468.77

N 0° 00' 53" E 468.77

N 0° 00' 53" E 468.77

N 0° 00' 53" E 468.77

N 0° 00' 53" E 468.77

N 0° 00' 53" E 468.77

N 0° 00' 53" E 468.77

N 0° 00' 53" E 468.77

N 0° 00' 53" E 468.77

N 0° 00' 53" E 468.77

N 0° 00' 53" E 468.77

N 0° 00' 53" E 468.77

N 0° 00' 53" E 468.77

N 0° 00' 53" E 468.77

N 0° 00' 53" E 468.77

N 0° 00' 53" E 468.77

N 0° 00' 53" E 468.77

N 0° 00' 53" E 468.77

N 0° 00' 53" E 468.77

N 0° 00' 53" E 468.77

N 0° 00' 53" E 468.77

N 0° 00' 53" E 468.77

N 0° 00' 53" E 468.77

N 0° 00' 53" E 468.77

N 0° 00' 53" E 468.77

N 0° 00' 53" E 468.77

N 0° 00' 53" E 468.77

N 0° 00' 53" E 468.77

N 0° 00' 53" E 468.77

N 0° 00' 53" E 468.77

N 0° 00' 53" E 468.77

N 0° 00' 53" E 468.77

N 0° 00' 53" E 468.77

N 0° 00' 53" E 468.77

N 0° 00' 53" E 468.77

N 0° 00' 53" E 468.77

N 0° 00' 53" E 468.77

N 0° 00' 53" E 468.77

N 0° 00' 53" E 468.77

N 0° 00' 53" E 468.77

N 0° 00' 53" E 468.77

N 0° 00' 53" E 468.77

N 0° 00' 53" E 468.77

N 0° 00' 53" E 468.77

N 0° 00' 53" E 468.77

N 0° 00' 53" E 468.77

N 0° 00' 53" E 468.77

N 0° 00' 53" E 468.77

N 0° 00' 53" E 468.77

N 0° 00' 53" E 468.77

N 0° 00' 53" E 468.77

N 0° 00' 53" E 468.77

N 0° 00' 53" E 468.77

N 0° 00' 53" E 468.77

N 0° 00' 53" E 468.77

N 0° 00' 53" E 468.77

N 0° 00' 53" E 468.77

N 0° 00' 53" E 468.77

N 0° 00' 53" E 468.77

N 0° 00' 53" E 468.77

N 0° 00' 53" E 468.77

N 0° 00' 53" E 468.77

N 0° 00' 53" E 468.77

N 0° 00' 53" E 468.77

N 0° 00' 53" E 468.77

N 0° 00' 53" E 468.77

N 0° 00' 53" E 468.77

N 0° 00' 53" E 468.77

N 0° 00' 53" E 468.77

N 0° 00' 53" E 468.77

N 0° 00' 53" E 468.77

N 0° 00' 53" E 468.77

N 0° 00' 53" E 468.77

N 0° 00' 53" E 468.77

N 0° 00' 53" E 468.77

N 0° 00' 53" E 468.77

N 0° 00' 53" E 468.77

N 0° 00' 53" E 468.77

N 0° 00' 53" E 468.77

N 0° 00' 53" E 468.77

N 0° 00' 53" E 468.77

N 0° 00' 53" E 468.77

N 0° 00' 53" E 468.77

N 0° 00' 53" E 468.77

N 0° 00' 53" E 468.77

N 0° 00' 53" E 468.77

N 0° 00' 53" E 468.77

N 0° 00' 53" E 468.77

N 0° 00' 53" E 468.77

N 0° 00' 53" E 468.77

N 0° 00' 53" E 468.77

N 0° 00' 53" E 468.77

N 0° 00' 53" E 468.77

N 0° 00' 53" E 468.77

N 0° 00' 53" E 468.77

N 0° 00' 53" E 468.77

N 0° 00' 53" E 468.77

N 0° 00' 53" E 468.77

N 0° 00' 53" E 468.77

N 0° 00' 53" E 468.77

N 0° 00' 53" E 468.77

N 0° 00' 53" E 468.77

N 0° 00' 53" E 468.77

N 0° 00' 53" E 468.77

N 0° 00' 53" E 468.77

N 0° 00' 53" E 468.77

N 0° 00' 53" E 468.77

N 0° 00' 53" E 468.77

N 0° 00' 53" E 468.77

N 0° 00' 53" E 468.77

N 0° 00' 53" E 468.77

N 0° 00' 53" E 468.77

N 0° 00' 53" E 46