

Plotted N.L.

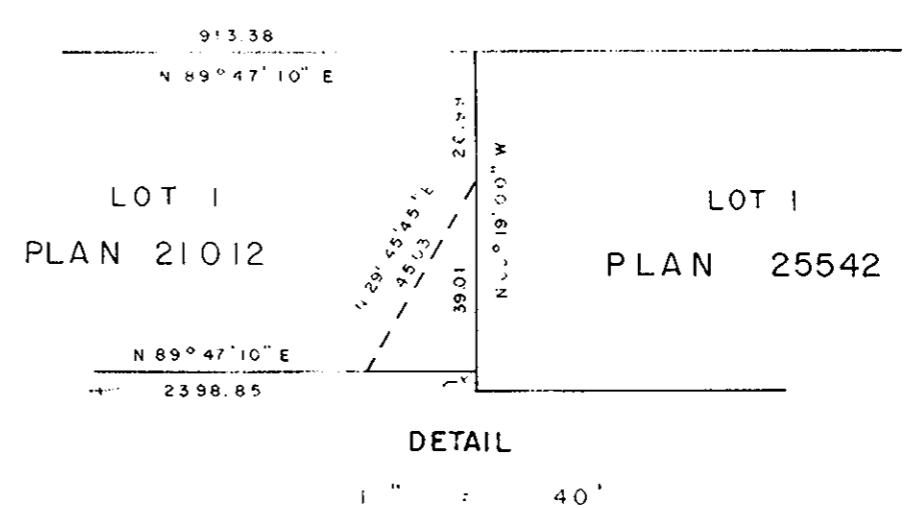
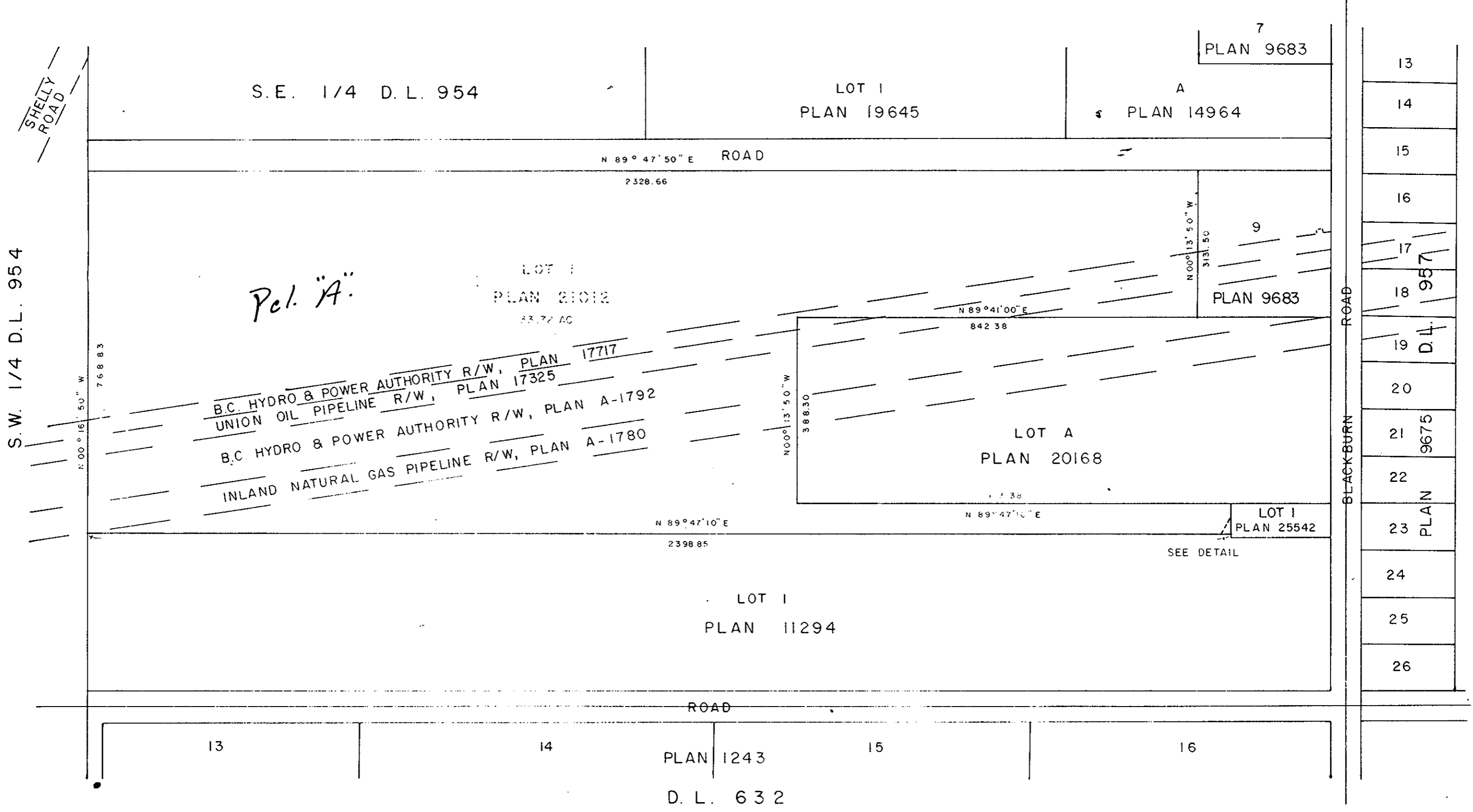
EXPLANATORY PLAN OF  
LOT 1, PLAN 21012 & PART OF CLOSED ROAD, PLAN 24718  
DISTRICT LOT 954  
CARIBOO DISTRICT— BRITISH COLUMBIA

SCALE: 1" = 200'

NOTE: Bearings are astronomic, derived from Plan 21012.

PLAN No 25543  
Deposited in the Land Registry  
Office at Prince George, B. C. this  
17 day of Dec, 1979

\_\_\_\_\_  
Registrar



CERTIFIED CORRECT  
According to information shown on  
Plans of record in the Prince George  
Land Registry Office.

D. A. DUFFY, B.C.L.S.  
April 25, 1979

W. D. USHER & ASSOCIATES  
LAND SURVEYORS  
PRINCE GEORGE - B. C.  
10725 A