

PLOTTED (NL)

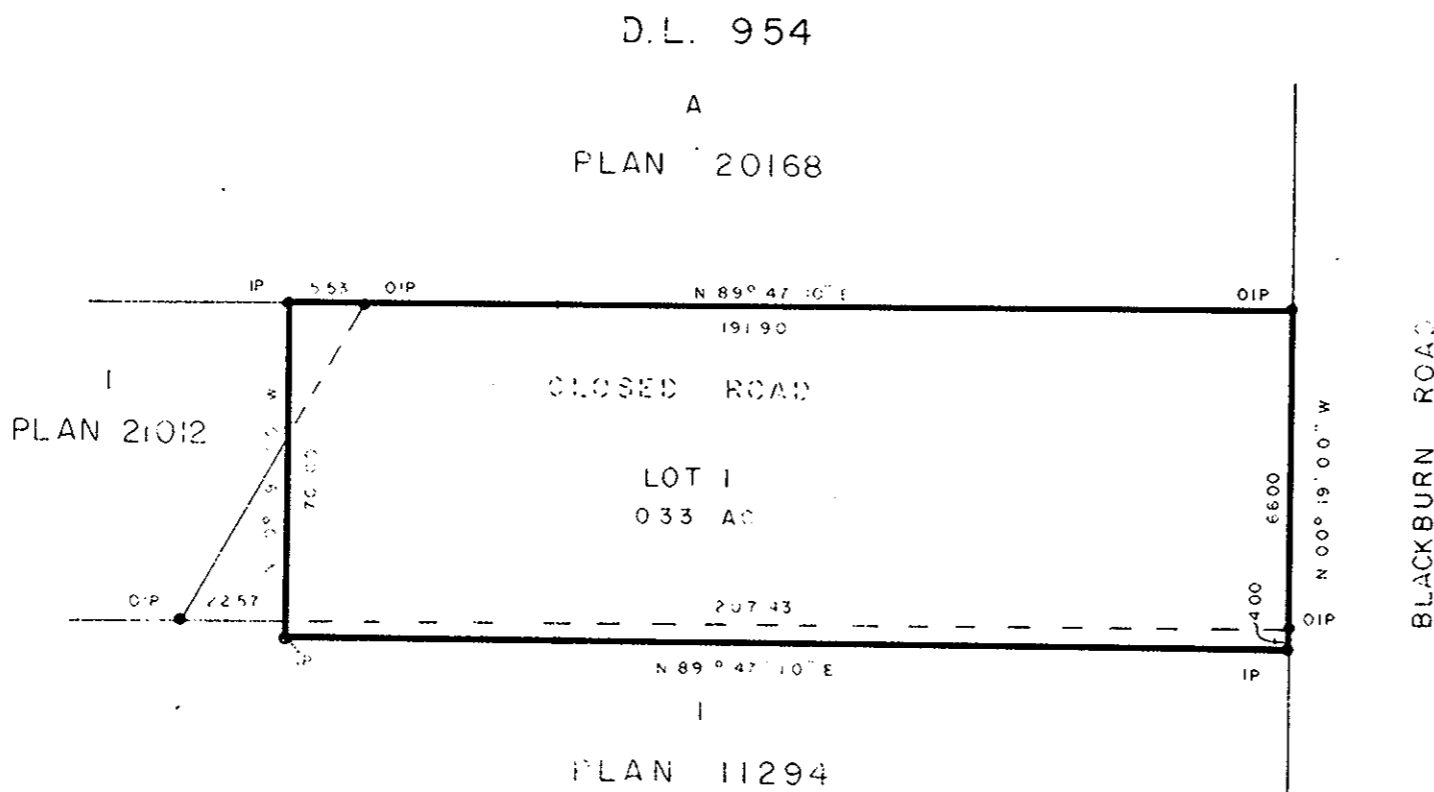
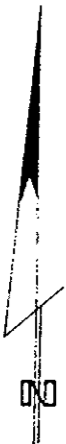
PLAN OF SUBDIVISION OF
PARTS OF LOT 1, PLAN 11294 &
LOT 1, PLAN 21012 & ADJACENT CLOSED ROAD, PLAN 24718
DISTRICT LOT 954
CARIBOO DISTRICT - BRITISH COLUMBIA
SCALE: 1" = 40'

NOTE: Bearings are astronomic, derived from the north
boundary of Lot 1, Plan 11294 as shown on Plan
21012.

LEGEND: • OIP denotes an old iron pin found.
• IP denotes an iron pin set.

PLAN No. 25542
Deposited in the Land Registry
Office at Prince George, B.C. this
17 day of Dec., 1979

E. J. Raven
Registrar



[Faint handwritten notes]

DONALD A. DUFFY of the City of Prince George,
a British Columbia Land Surveyor, make oath and say
that he was present at and did personally superintend
the survey represented by this plan and that the survey
and plan are correct. The said survey was completed
on the 3rd day of April, 1979.

Sworn before me this 11
day of April, 1979

A Commissioner for taking Affidavits
for British Columbia

CARMA DEVELOPERS, LTD.
Owner Buddy Jamieson
Witness Rudie [unclear]

City of Prince George
E. W. Meier
Mayor
S. W. Buchanan
Clerk

Approved under the Land Registry Act
this 7 day of DEC 1979

[Signature]
Approving Officer, City of Prince George

This plan lies within the Fraser - Fort George
Regional District

W. O. USHER & ASSOCIATES
LAND SURVEYORS
PRINCE GEORGE - B.C.
L2 13 10725