

PLOTTED (GL)

PLAN OF SUBDIVISION OF PART OF
LOT 2, PLAN 19210
DISTRICT LOT 2508
CARIBOO DISTRICT— BRITISH COLUMBIA

SCALE: 1 : 1000

NOTE: Bearings are astronomic, derived from the north
boundary of Lot 2, Plan 19210 as shown on Plan 19833.

LEGEND: •OIP denotes an old iron pin.

PLAN N^o 25445

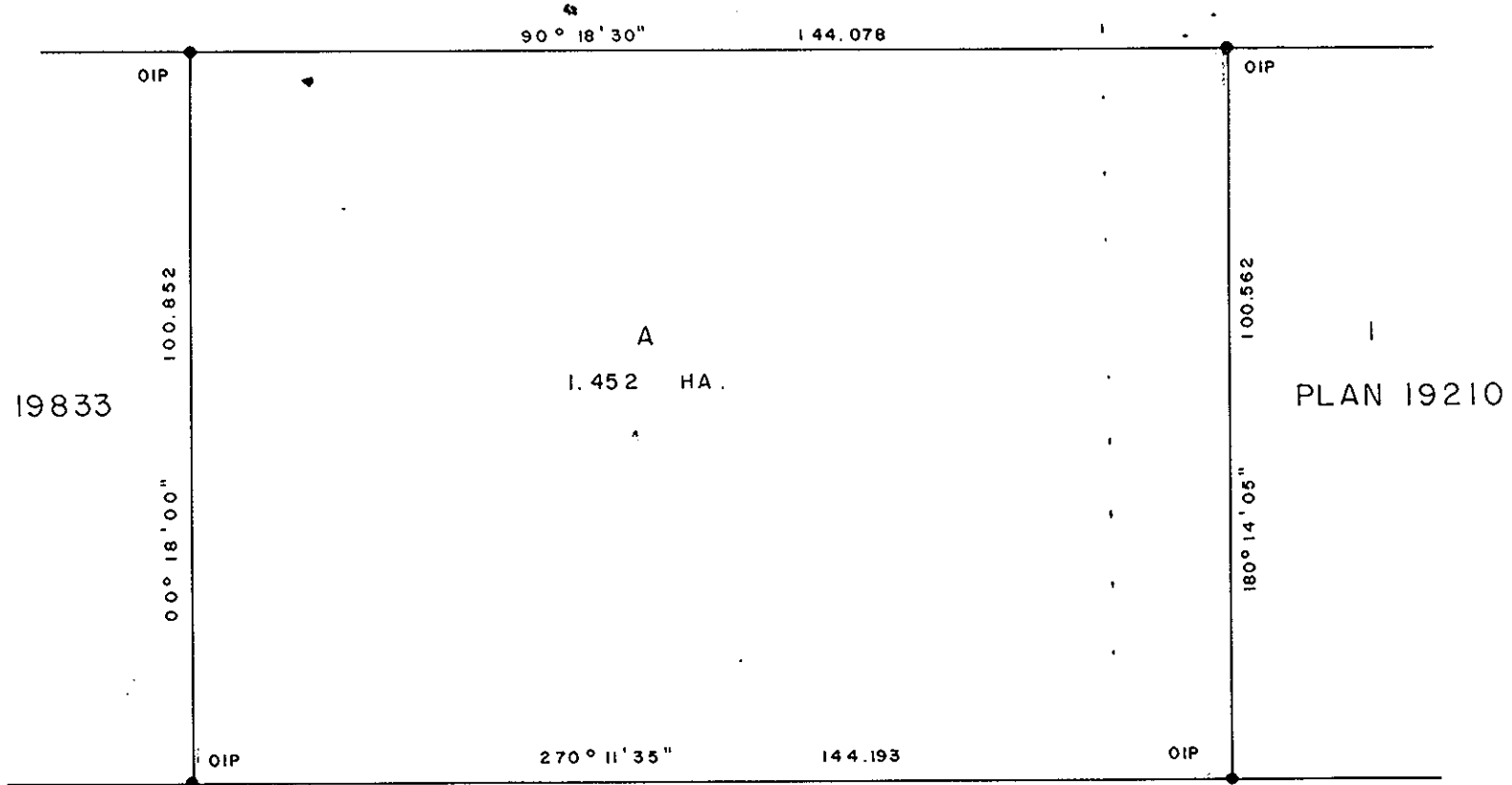
Deposited in the Land Registry
Office at Prince George, B. C. this
8 day of Nov, 1979

E. J. Raven
Registrar

PLAN 15185 — D. L. 2507



15 TH AVENUE



REMAINDER 2

PLAN 19210 — D. L. 2508

I, DONALD A. DUFFY of the City of Prince George,
a British Columbia Land Surveyor, make oath and say
that I was present at and did personally superintend
the survey represented by this plan and that the survey
and plan are correct. The said survey was completed
on the 15 day of AUGUST, 1979

B.C.L.S.

Sworn before me this 17
day of AUGUST, 1979

A Commissioner for taking Affidavits
for British Columbia.

BRITISH COLUMBIA
BUILDINGS CORPORATION

Approved under the Land Registry Act
this 11 day of SEPT, 1979.

Approving Officer, City of Prince George

This plan lies within the Fraser-Fort George
Regional District.

W. D. USHER & ASSOCIATES
LAND SURVEYORS
PRINCE GEORGE — B. C.
MT 17 10962