

26

25423

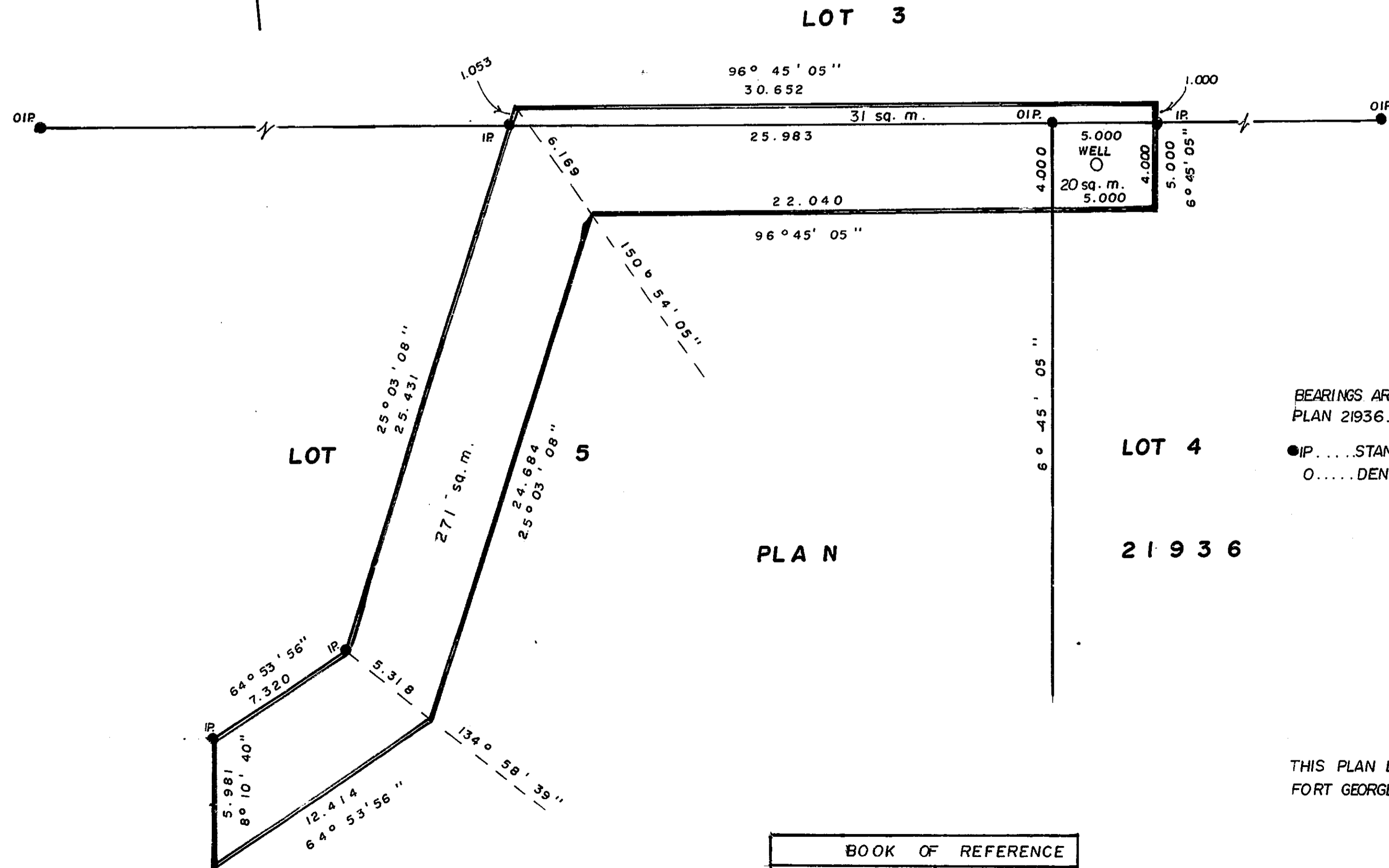
PLAN OF EASEMENT IN  
LOTS 3, 4 and 5,  
PLAN 21936, D.L. 2422,  
CARIBOO DISTRICT.

SCALE: 1: 250

PLAN NO. 25423

DEPOSITED IN THE LAND REGISTRY OFFICE AT  
PRINCE GEORGE THIS 2<sup>nd</sup> DAY OF November 1979

"E. J. Raven" per ip.  
REGISTRAR



BEARINGS ARE ASTRONOMIC DERIVED FROM  
PLAN 21936.

- IP.....STANDARD IRON POST.
- .....DENOTES "OLD"

I D. KEOWN OF THE CITY OF PRINCE GEORGE  
BRITISH COLUMBIA LAND SURVEYOR MAKE OATH  
AND SAY THAT I WAS PRESENT AT AND DID  
PERSONALLY SUPERINTEND THE SURVEY  
REPRESENTED BY THIS PLAN AND THAT THE  
SURVEY AND PLAN ARE CORRECT THE SAID  
SURVEY WAS COMPLETED ON THE 28 DAY OF  
SEPTEMBER, 1979.

D. Keown  
D. KEOWN, B.C.L.S.

SWORN BEFORE ME AT PRINCE GEORGE, B.C.  
THIS 28 DAY OF September 1979

THIS PLAN LIES WITHIN THE FRASER  
FORT GEORGE REGIONAL DISTRICT.

D. Keown  
A COMMISSIONER FOR TAKING AFFIDAVITS FOR  
BRITISH COLUMBIA.

BOOK OF REFERENCE	
Description	Area
Lot 3	31 sq. m.
Lot 4	20 sq. m.
Lot 5	271 sq. m.

McWILLIAM, WHYTE, GOBLE, & ASSOCIATES,  
B.C. LAND SURVEYORS  
PRINCE GEORGE - KAMLOOPS - SMITHERS

REF. NO. 79162