

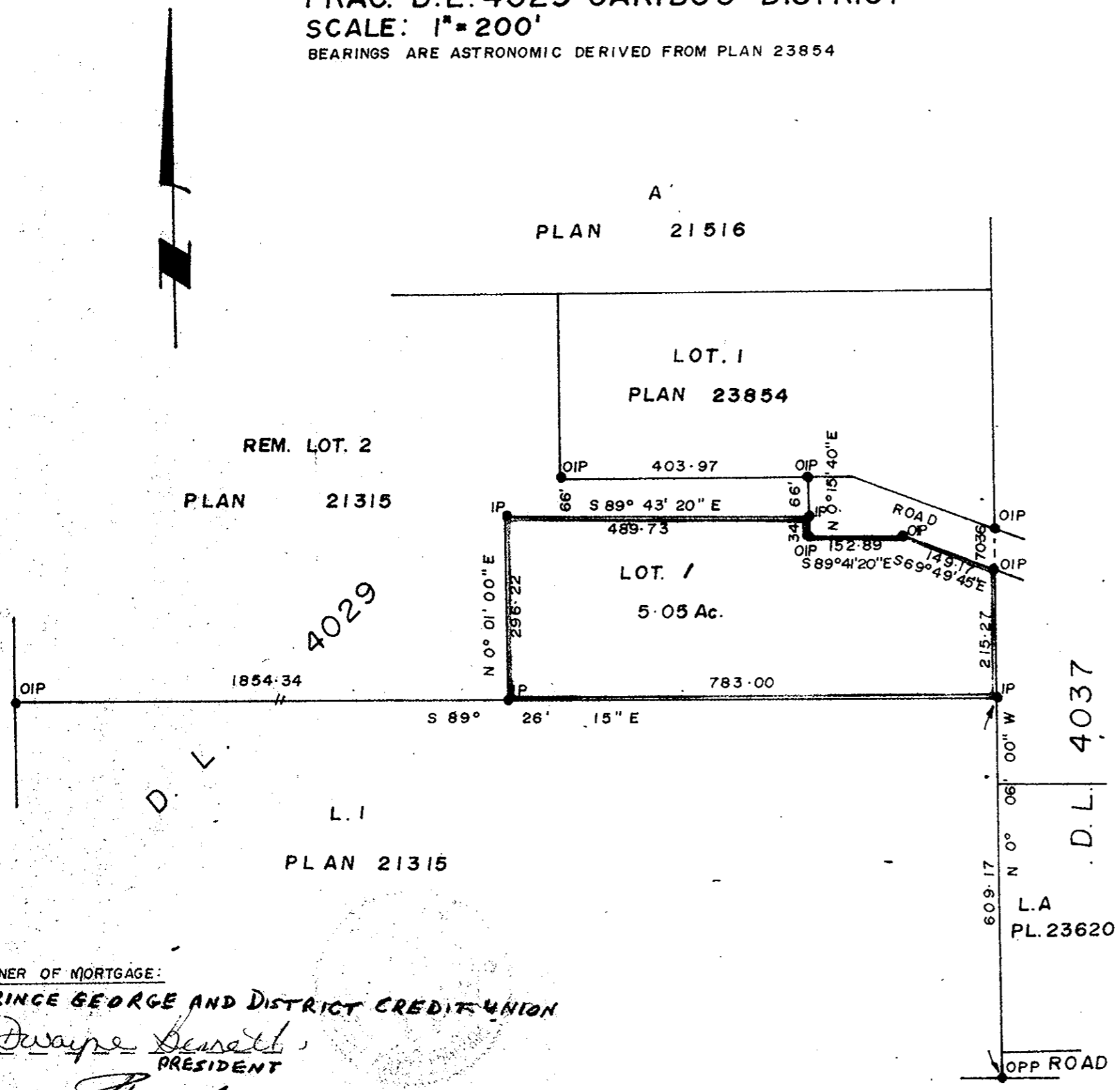
NO METR. MA. EX. KU.

# PLAN OF SUBDIVISION OF PART OF LOT 2, PLAN 21315 EXCEPT PLANS 21516 & 23854 FRAC. D.L. 4029 CARIBOO DISTRICT SCALE: 1" = 200'

BEARINGS ARE ASTRONOMIC DERIVED FROM PLAN 23854

PLAN NO. **25360**  
DEPOSITED IN THE LAND REGISTRY  
OFFICE AT PRINCE GEORGE ON THE  
18<sup>th</sup> DAY OF Oct 1979

*E. J. Raven*  
REGISTRAR



LEGEND:  
 ●IP --- STANDARD IRON POST  
 ●PP --- STANDARD PIPE POST  
 O --- DENOTING "OLD"

I, V. BARTELL OF THE CITY OF PRINCE GEORGE BRITISH COLUMBIA LAND SURVEYOR MAKE OATH AND SAY THAT I WAS PRESENT AT AND DID PERSONALLY SUPERINTEND THE SURVEY REPRESENTED BY THIS PLAN AND THAT THE SURVEY AND PLAN ARE CORRECT. THE SAID SURVEY WAS COMPLETED ON THE 4 DAY OF September 1979

*V. Bartell*  
 V. BARTELL, B.C.L.S.

SWORN BEFORE ME AT PRINCE GEORGE THIS 19 DAY OF September 1979

*Robin*  
 A COMMISSIONER FOR TAKING  
 AFFIDAVITS FOR BRITISH COLUMBIA

APPROVED UNDER THE LAND REGISTRY ACT ON THE 21 DAY OF SEPT. 1979.

*C. E. Obst*  
 APPROVING OFFICER  
 CITY OF PRINCE GEORGE

OWNER *Bruce Cameron*  
*Margaret Cameron*

WITNESS *[Signature]*

OWNER OF MORTGAGE:  
**PRINCE GEORGE AND DISTRICT CREDIT UNION**  
*Dwayne Bennett*  
 PRESIDENT  
*[Signature]*  
 TREASURER

THIS PLAN LIES WITHIN THE FRASER FORT GEORGE REGIONAL DISTRICT

McWILLIAM - WHYTE - GOBLE & ASSOCIATES  
 B.C. LAND SURVEYORS  
 PRINCE GEORGE - KAMLOOPS - SMITHERS  
 REF. NO. **79146**

D. L. 4029