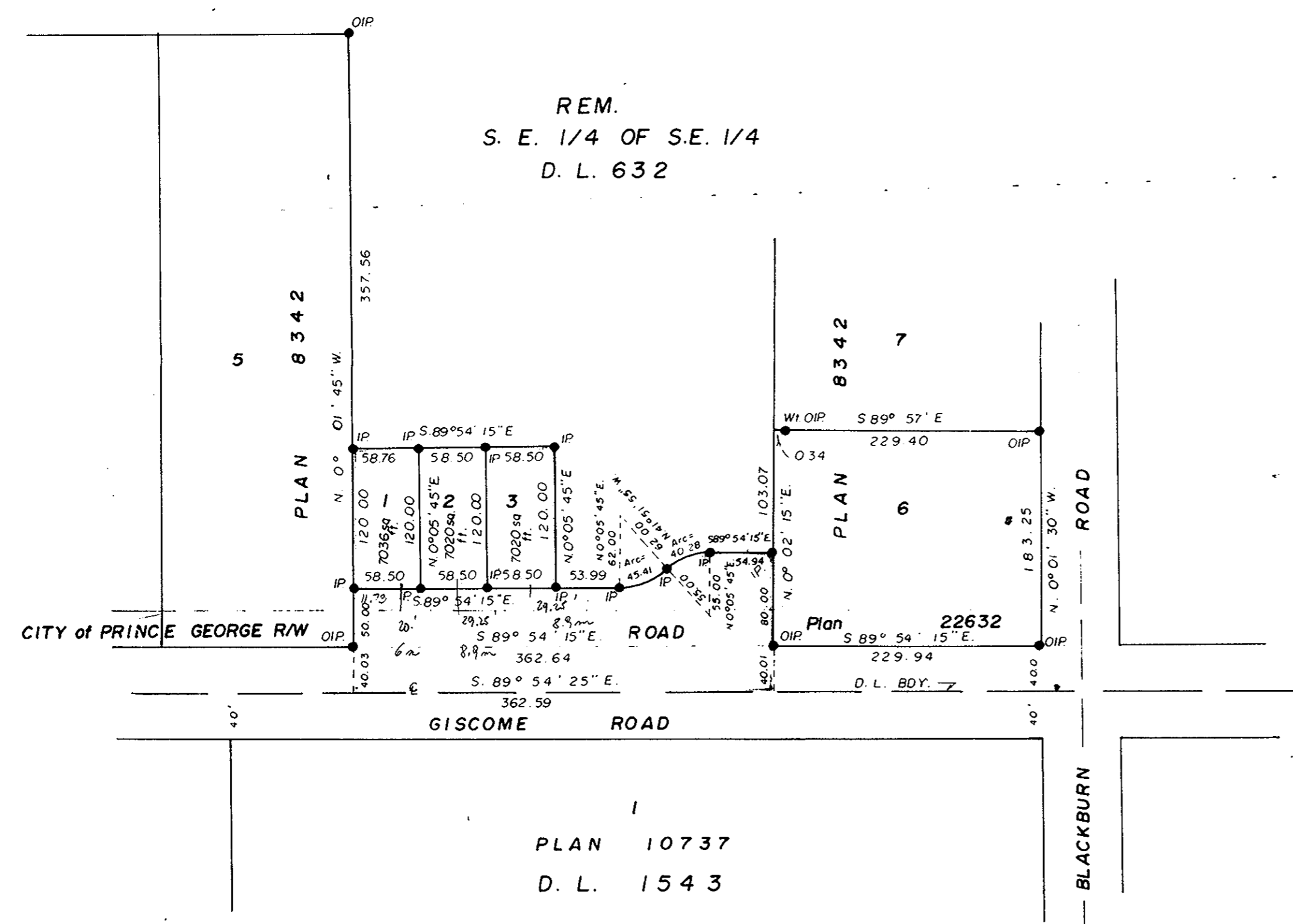


RECTIFIED (M.C.)

PLAN OF SUBDIVISION OF PART OF
S.E. 1/4 OF S.E. 1/4 D.L. 632,
EXCEPT PLAN 8342,
CARIBOO DISTRICT.
SCALE: 1" = 100'

PLAN NO. 25304
DEPOSITED IN THE LAND REGISTRY OFFICE
AT PRINCE GEORGE THIS 21ST DAY OF October, 1979.

"E. T. Schmeier"
REGISTRAR



LEGEND
BEARINGS ARE ASTRONOMIC DERIVED
FROM S. BDY. OF S.E. 1/4 D.L. 632 SHOWN
AS S. 89° 54' 25" E (PLAN 22632)
● IP ... STANDARD IRON POST.
○ DENOTES 'OLD'
WI ... DENOTES 'WITNESS'

I, V. BARTELL, OF THE CITY OF PRINCE GEORGE,
BRITISH COLUMBIA LAND SURVEYOR MAKE OATH
AND SAY THAT I WAS PRESENT AT AND DID
PERSONALLY SUPERINTEND THE SURVEY REPRESENTED
BY THIS PLAN AND THAT THE SURVEY AND
PLAN ARE CORRECT. THE SAID SURVEY WAS
COMPLETED ON THE 21ST DAY OF JULY, 1979.

Victor Barzell
V. BARTELL, B.C.L.S.

APPROVED UNDER THE LAND REGISTRY ACT
THIS 12TH DAY OF SEPT, 1979.

P. E. O'Leary
APPROVING OFFICER
CITY OF PRINCE GEORGE.

SWORN BEFORE ME AT PRINCE GEORGE, B.C.,
THIS 21ST DAY OF JULY, 1979.

B. ...
A COMMISSIONER FOR TAKING AFFIDAVITS
FOR BRITISH COLUMBIA.

OWNER: *Joseph Edmund Conway*
JOSEPH EDMUND CONWAY.

WITNESS: *Victor Barzell*

R.W. - L: 12/56 RELEASED BY
THE CITY OF PRINCE GEORGE.

E. W. ...
S. D. ...

THIS PLAN LIES WITHIN THE FRASER
FORT GEORGE REGIONAL DISTRICT.

McWILLIAM, WHYTE, GOBLE, & ASSOCIATES,
B.C. LAND SURVEYORS,
PRINCE GEORGE - KAMLOOPS - SMITHERS

REF. NO. 79042.

66
14
50
80

40320

52304