

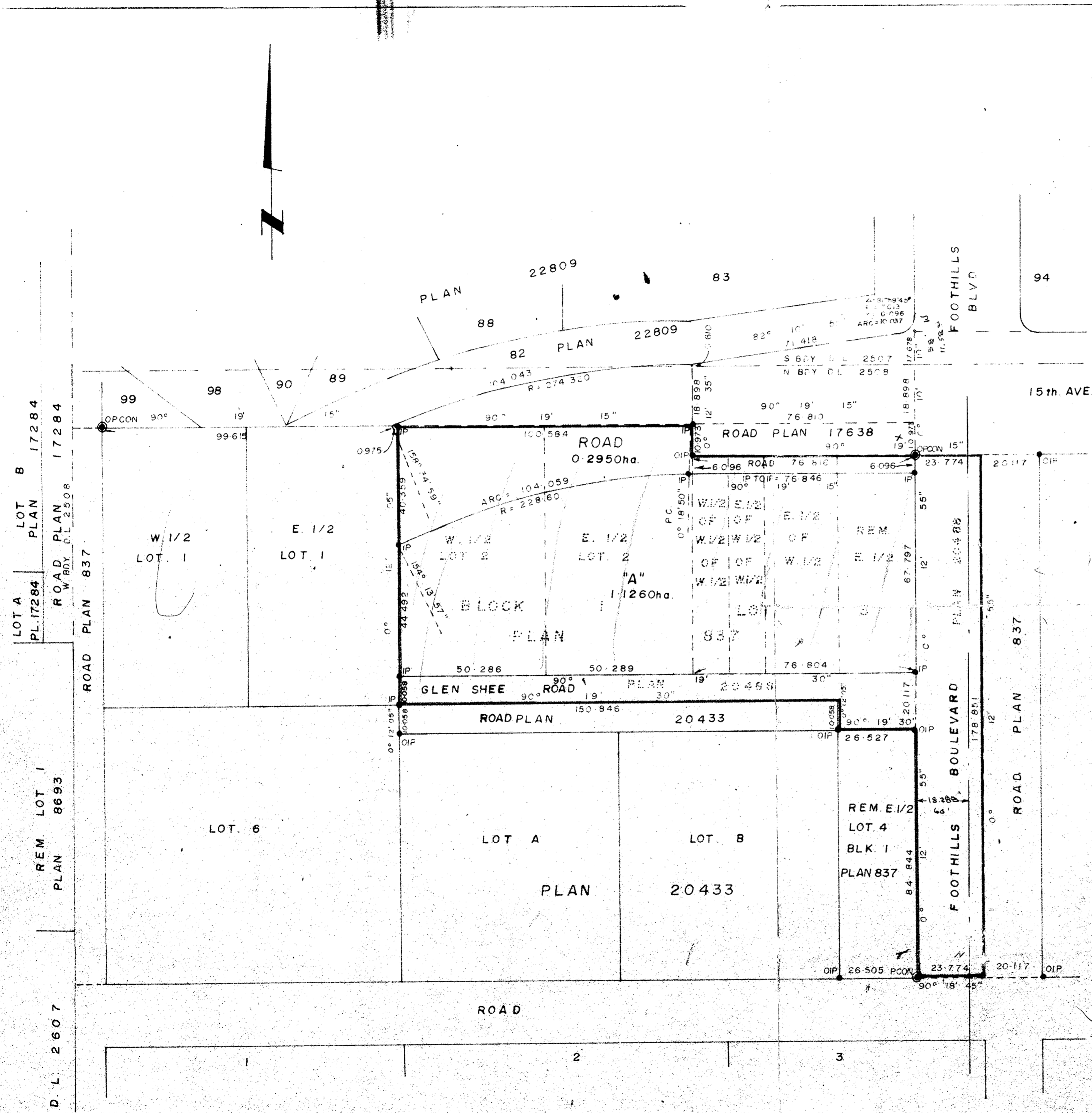
Plotted (FL)

S2303
City of Prince George

PLAN NO. 25303

DEPOSITED IN THE LAND REGISTRY OFFICE AT PRINCE GEORGE ON THE 13th DAY OF October 1979.

E.T. Schooley
REGISTRAR



PLAN OF SUBDIVISION OF
 REM. E. 1/2 AND W. 1/2 OF LOT 2 EXCEPT
 PLAN 20488/REM. W. 1/2 OF W. 1/2 OF W. 1/2
 AND E. 1/2 OF W. 1/2 OF W. 1/2 AND E. 1/2 OF
 W. 1/2 & E. 1/2 OF LOT 3 EXCEPT PLANS
 20488 & 17638/BLK. 1 PLAN 837 & ROAD
 PLAN 20488 D.L. 2508
 CARIBOO DISTRICT

SCALE: 1:1000 1cm = 10m.
 DISTANCES ARE IN METERS & DECIMALS THEREOF

BEARINGS ARE ASTRONOMIC DERIVED FROM PLAN 22809

LEGEND:

- OIPCON --- STANDARD CONCRETE POST
- OIP --- STANDARD IRON POST
- --- DENOTING "OLD"

I, V. BARTELL OF THE CITY OF PRINCE GEORGE BRITISH COLUMBIA LAND SURVEYOR MAKE OATH AND SAY THAT I WAS PRESENT AT AND DID PERSONALLY SUPERINTEND THE SURVEY REPRESENTED BY THIS PLAN AND THAT THE SURVEY AND PLAN ARE CORRECT. THE SAID SURVEY WAS COMPLETED ON THE 28th DAY OF July 1979.

V. Bartell
 V. BARTELL, B.C.L.S.

SWORN BEFORE ME AT PRINCE GEORGE THIS 8th DAY OF August 1979

A COMMISSIONER FOR TAKING AFFIDAVITS FOR BRITISH COLUMBIA

APPROVED UNDER THE LAND REGISTRY ACT ON THE 9th DAY OF August 1979

C.E. Olat
 APPROVING OFFICER
 CITY OF PRINCE GEORGE

I hereby certify that this is a true copy of the Official Plan on deposit with the Surveyor General, Ministry of Lands, Parks and Housing and numbered 40 tube 903

L.J. Olat
 Acting Surveyor General, Victoria, B.C.
 September 19, 1979.

THIS PLAN LIES WITHIN THE FRASER FORT GEORGE REGIONAL DISTRICT

M. & WILLIAM WHYTE-GOBLES ASSOCIATES
 B.C. LAND SURVEYORS
 PRINCE GEORGE - KAMLOOPS - SMITHERS
 REF. NO. 79079

D.L. 2508