

26

25288

PLAN OF RIGHTS-OF-WAY THROUGH
 LOTS 58, 59, 85 & 86, PLAN 22464
 DISTRICT LOT 2433
 CARIBOO DISTRICT - BRITISH COLUMBIA
 SCALE: 1" = 50'

NOTE: Bearings are astronomic, derived from the north boundary of Pearl Drive, Plan 22464.

LEGEND: • OIP denotes an old iron pin found.

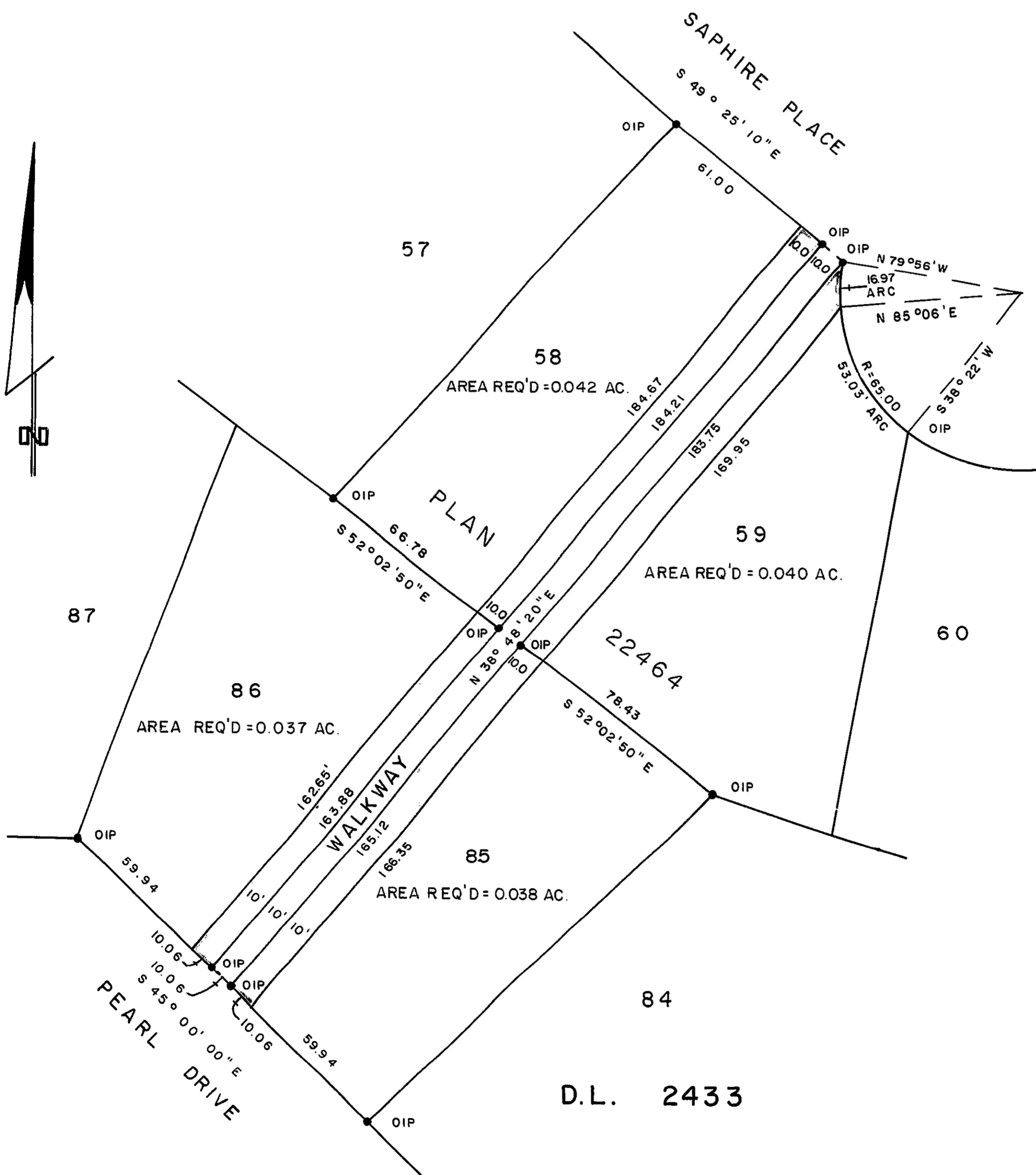
PLAN No **25288**

Deposited in the Land Registry Office at Prince George, B.C. this 26 day of SEPT., 1979.

E.J. RAVEN
 Registrar

BOOK OF REFERENCE

PARCEL	AREA REQ'D
LOT 58, PLAN 22464, D.L. 2433	0.042 AC.
LOT 59, PLAN 22464, D.L. 2433	0.040 AC.
LOT 85, PLAN 22464, D.L. 2433	0.038 AC.
LOT 86, PLAN 22464, D.L. 2433	0.037 AC.



I, DONALD A. DUFFY of the City of Prince George, a British Columbia Land Surveyor, make oath and say that I was present at and did personally superintend the survey represented by this plan and that the survey and plan are correct. The said survey was completed on the 6 day of SEPT., 1979.

[Signature]
 B.C.L.S.

Sworn before me this 25 day of SEPT., 1979

[Signature]
 A Commissioner for taking Affidavits for British Columbia.

This plan lies within the Fraser-Fort George Regional District.