

PLAN OF SUBDIVISION OF  
REMAINDER OF DISTRICT LOT 8178  
CARIBOO DISTRICT - BRITISH COLUMBIA

HJ

SCALE: 1 : 1000

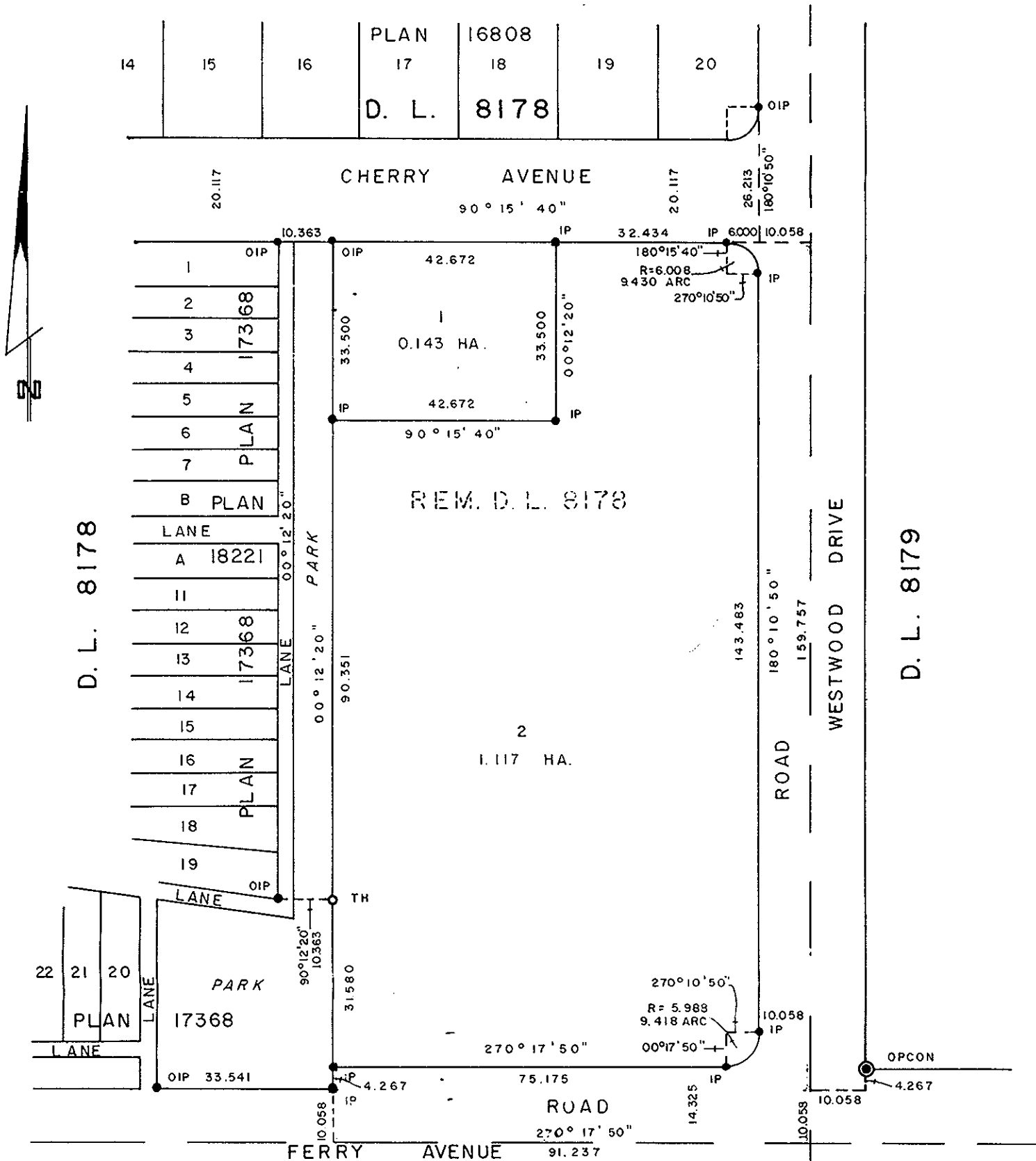
NOTE: Bearings are astronomic, derived from the west boundary of Lane, Plan 17368.

LEGEND: ● OPCON denotes an old concrete monument found.  
● OIP denotes an old iron pin found.  
● IP denotes an iron pin set.  
○ TH denotes traverse hub.

PLAN N<sup>o</sup> 25241

Deposited in the Land Registry Office at Prince George, B.C. this 6<sup>th</sup> day of September, 1979.

"E.T. SCHOLEY"  
Registrar



I - PLAN 7867  
D.L. 1433

A - PLAN 19988  
D.L. 8181

I, DONALD A. DUFFY of the City of Prince George, a British Columbia Land Surveyor, make oath and say that I was present at and did personally superintend the survey represented by this plan and that the survey and plan are correct. The said survey was completed on the 31 day of May, 1979.

Approved under the Land Registry Act this 6 day of SEPT, 1979

JO-EL DEVELOPMENTS LTD.

C. E. Oly.  
Approving Officer, City of Prince George

Sworn before me this 1 day of JUNE, 1979

B.C.L.S.

This plan lies within the Fraser-Fort George Regional District.

A Commissioner for taking Affidavits for British Columbia.

W. D. USHER & ASSOCIATES  
LAND SURVEYORS  
PRINCE GEORGE - B.C.  
M D 10 9476