

PLAN OF SUBDIVISION OF
 LOT A, PLAN 20867
 DISTRICT LOTS 937 & 938
 CARIBOO DISTRICT — BRITISH COLUMBIA

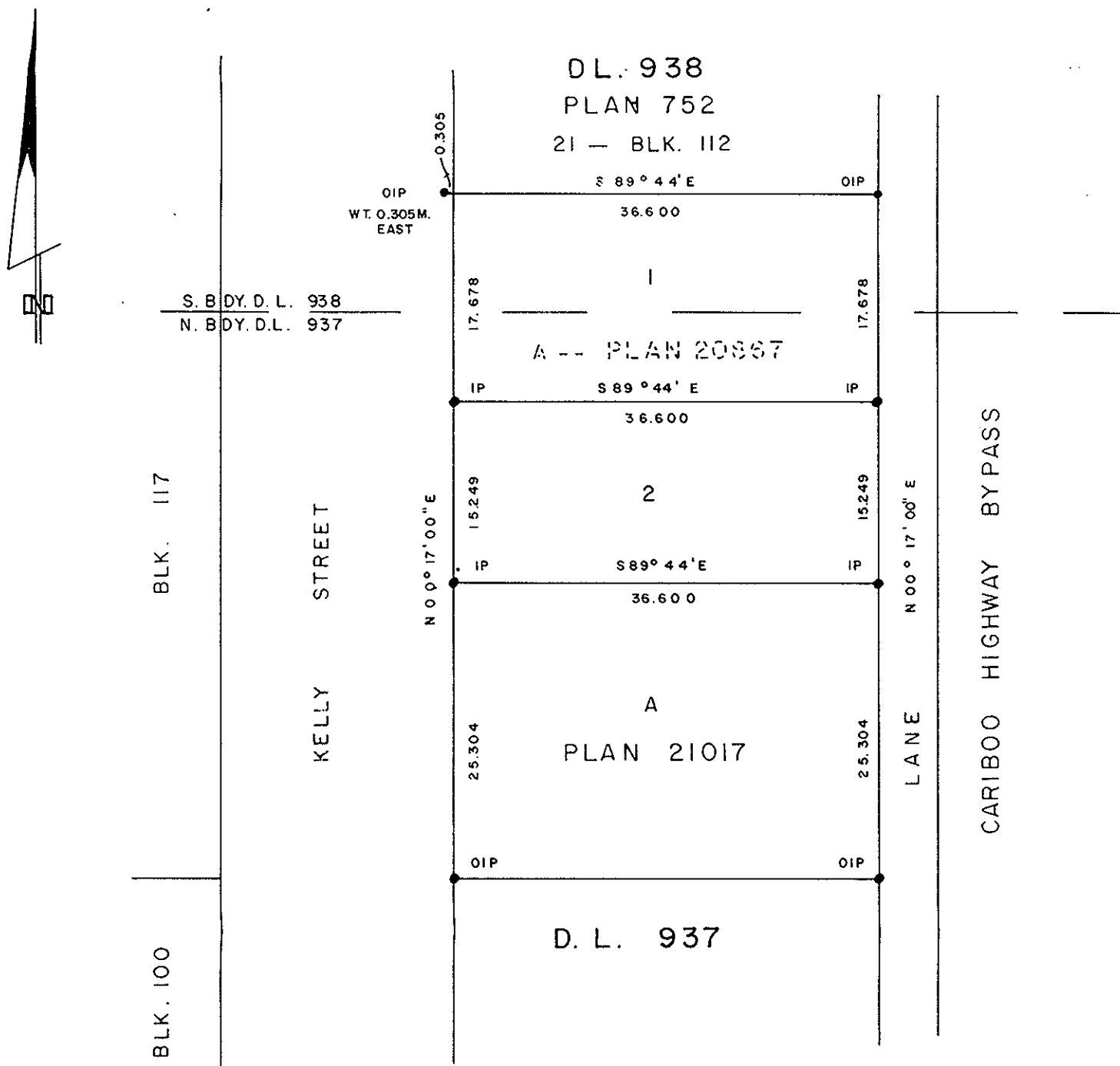
SCALE: 1 : 500

NOTE: Bearings are astronomic, derived from the east boundary of Kelly Street as shown on Plans 20867 and 21017.

LEGEND: • OIP denotes an old iron pin found.
 • IP denotes an iron pin set.
 WT denotes witness.

PLAN N^o 25214
 Deposited in the Land Registry Office at Prince George, B.C. this 30th day of August, 1979

"E. T. Schooley"
 Registrar



I, DONALD A. DUFFY of the City of Prince George, a British Columbia Land Surveyor, make oath and say that I was present at and did personally superintend the survey represented by this plan and that the survey and plan are correct. The said survey was completed on the 12 day of JULY, 1979

[Signature]
 B/C.L.S.

Sworn before me this 24 day of Aug., 1979

PATCH LAND DEVELOPMENT CO. LTD.

[Signature]
 President

Approved under the Land Registry Act this _____ day of _____, 19__

Approving Officer, City of Prince George

This plan lies within the Fraser-Fort George Regional District.

[Signature]
 A Commissioner for taking Affidavits for British Columbia.