

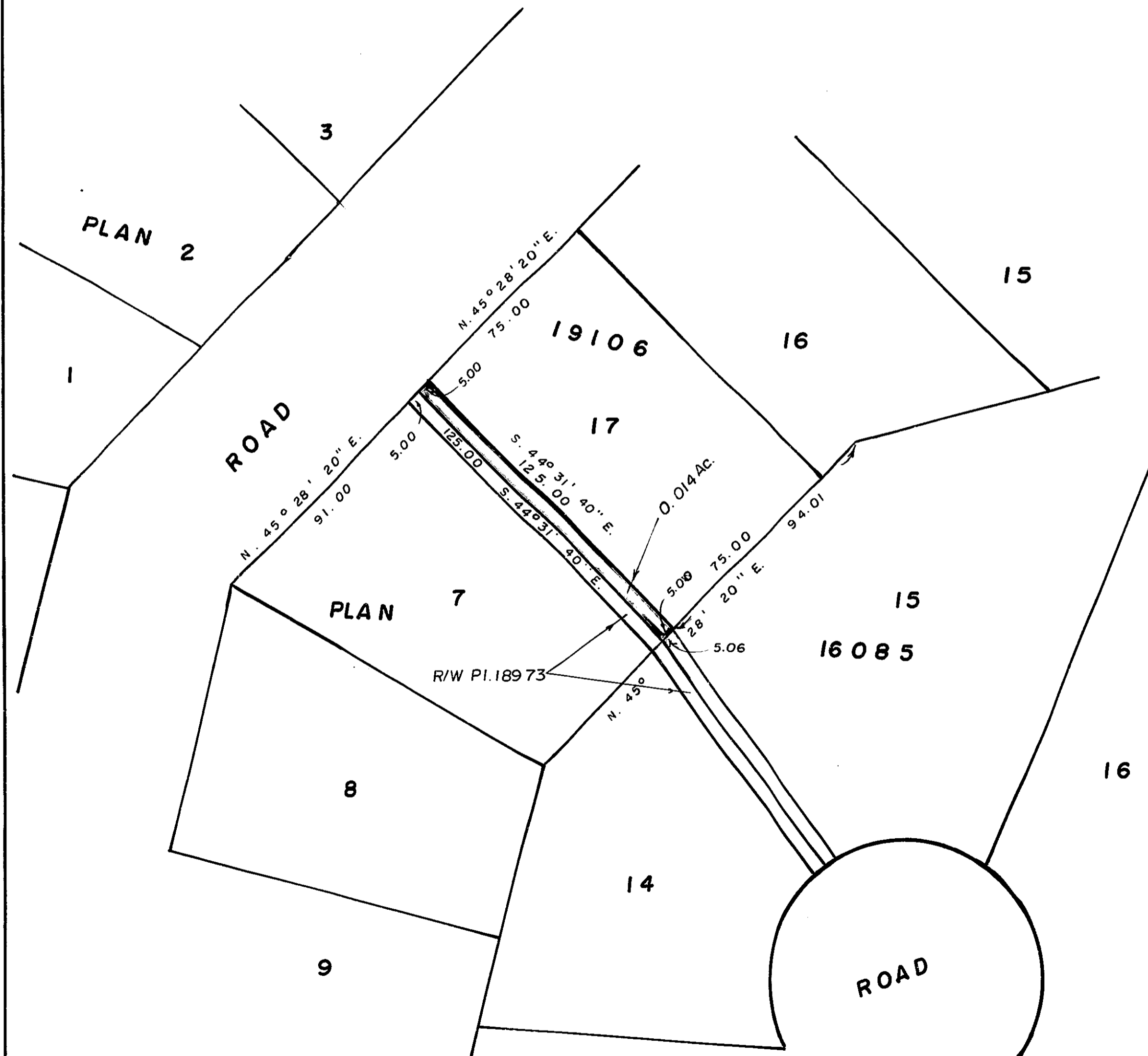
26

EXPLANATORY PLAN OF RIGHT-OF-WAY
IN LOT 17, PLAN 19106,
D.L. 753, CARIBOO DISTRICT.
SCALE: 1" = 50'

PLAN No. 25205

DEPOSITED IN THE LAND REGISTRY OFFICE AT
PRINCE GEORGE THIS 27 DAY OF August 1979

E.T. SCHOOLEY per df
REGISTRAR



CERTIFIED CORRECT
ACCORDING TO LAND REGISTRY OFFICE
RECORDS THIS 15 DAY OF August 1979.

D. Keown
D. KEOWN, B.C.L.S.

BOOK OF REFERENCE	
LOT	AREA
LOT 17, PI. 19106	0.014 AC.

THIS PLAN LIES WITHIN THE FRASER
FORT GEORGE REGIONAL DISTRICT.

McWILLIAM, WHYTE, GOBLE, & ASSOCIATES,
B.C. LAND SURVEYORS,
PRINCE GEORGE - KAMLOOPS - SMITHERS.

REF. NO. 79143