

26

PLAN OF RIGHT-OF-WAY THROUGH
S.W. 1/4 DISTRICT LOT 4028
AND S.E. 1/4 DISTRICT LOT 4047
CARIBOO DISTRICT - BRITISH COLUMBIA

SCALE: 1 : 2000

NOTE: Bearings are astronomic, derived from the east boundary of S.E. 1/4 D.L. 4047 as shown on Plan 6894.

LEGEND: ● OPP denotes an old pipe post found.
● OIP denotes an old iron pin found.
● IP denotes an iron pin set.

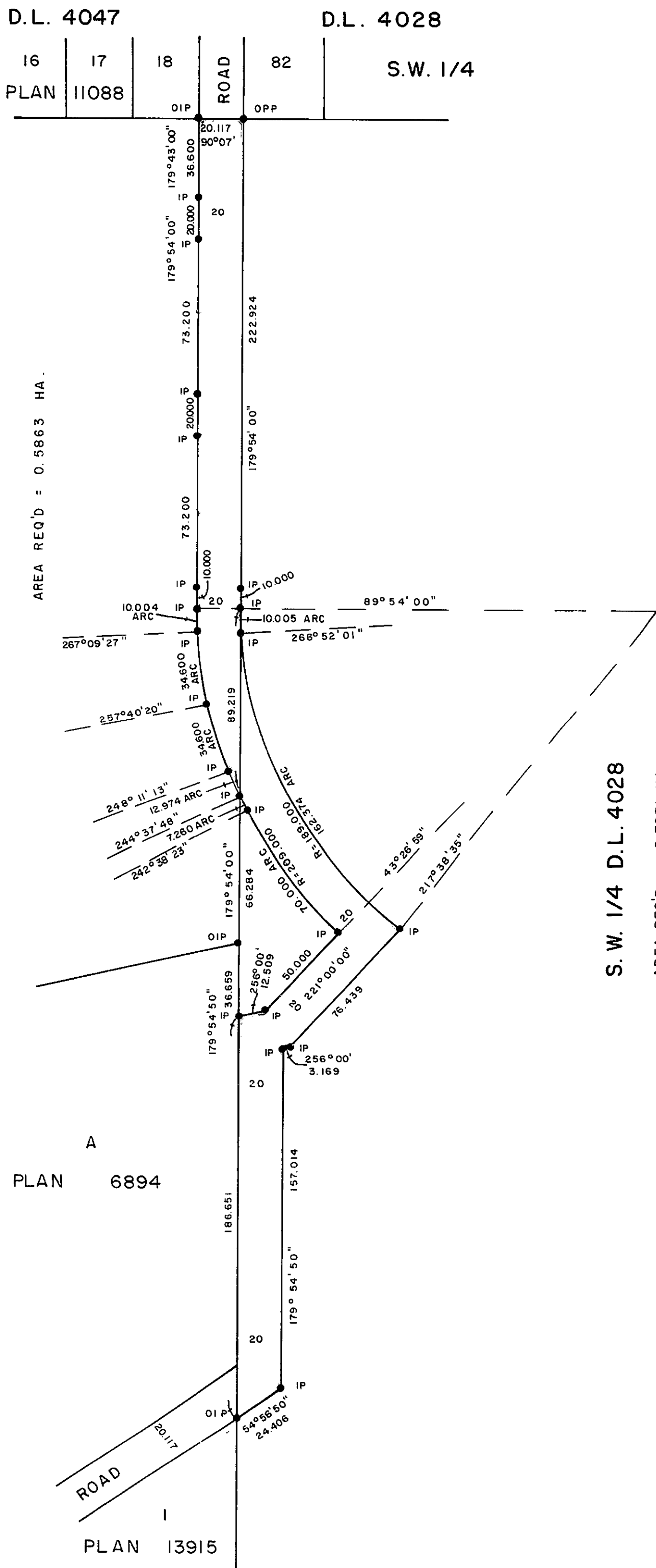
PLAN N^o **25204**
Deposited in the Land Registry
Office at Prince George, B.C. this
27 day of AUG., 1979

Registrar E.T. Schooley

BOOK OF REFERENCE	
PARCEL	AREA REQ'D
S.W. 1/4 D.L. 4028	0.7071 HA.
THAT PART OF S.E. 1/4 OF D.L. 4047 LYING EAST OF PLAN H-226 & NORTH OF PLAN 6894	0.5863 HA.



THAT PART OF S.E. 1/4 OF
D.L. 4047 LYING EAST OF
PLAN H-226 AND NORTH
OF PLAN 6894



I, DONALD A. DUFFY of the City of Prince George, a British Columbia Land Surveyor, make oath and say that I was present at and did personally superintend the survey represented by this plan and that the survey and plan are correct. The said survey was completed on the 21 day of June, 1979

[Signature]
B.C.L.S.

Sworn before me this 25 day of June, 1979

[Signature]
A Commissioner for taking Affidavits for British Columbia.

This plan lies within the Fraser-Fort George Regional District.