

(NK) OK

PLAN NO. 25177
DEPOSITED IN THE LAND REGISTRY OFFICE AT
PRINCE GEORGE THIS 21st DAY OF August 1979.

E. J. Rowsa per
REGISTRAR

PLAN OF SUBDIVISION
OF PART OF S. 1/2 OF N. 1/2
OF S.W. 1/4 D.L. 633, except Plan 8733.
CARIBOO DISTRICT.
Scale: 1:1000

REM.
N. 1/2 of N. 1/2
of S.W. 1/4
D.L. 633

REM.
S. 1/2 of N. 1/2
of S.W. 1/4 D.L. 633

REM.
S. 1/2 of SW 1/4
DL 633

REM.
II
PLAN 15238

INSPECTED
this 27th day of June 1979.

V. Bartell
V. Bartell, B.C.L.S.

I, V. Bartell, of the City of Prince George, British Columbia
Land Surveyor, make oath and say that I was present at and
did personally superintend the survey represented by this plan
and that the survey and plan are correct. The said survey
was completed on the 26th day of December 1978.

V. Bartell
V. Bartell, B.C.L.S.

Sworn before me at Prince George B.C.
this 27th day of June 1979.

A Commissioner for taking affidavits
for British Columbia.

Owner _____
Witness _____

"Approval of this subdivision plan is subject to the
condition that there be concurrent registration of said
right-of-way agreement concerning municipal utility
works which said agreement has been initiated by me
for identification."

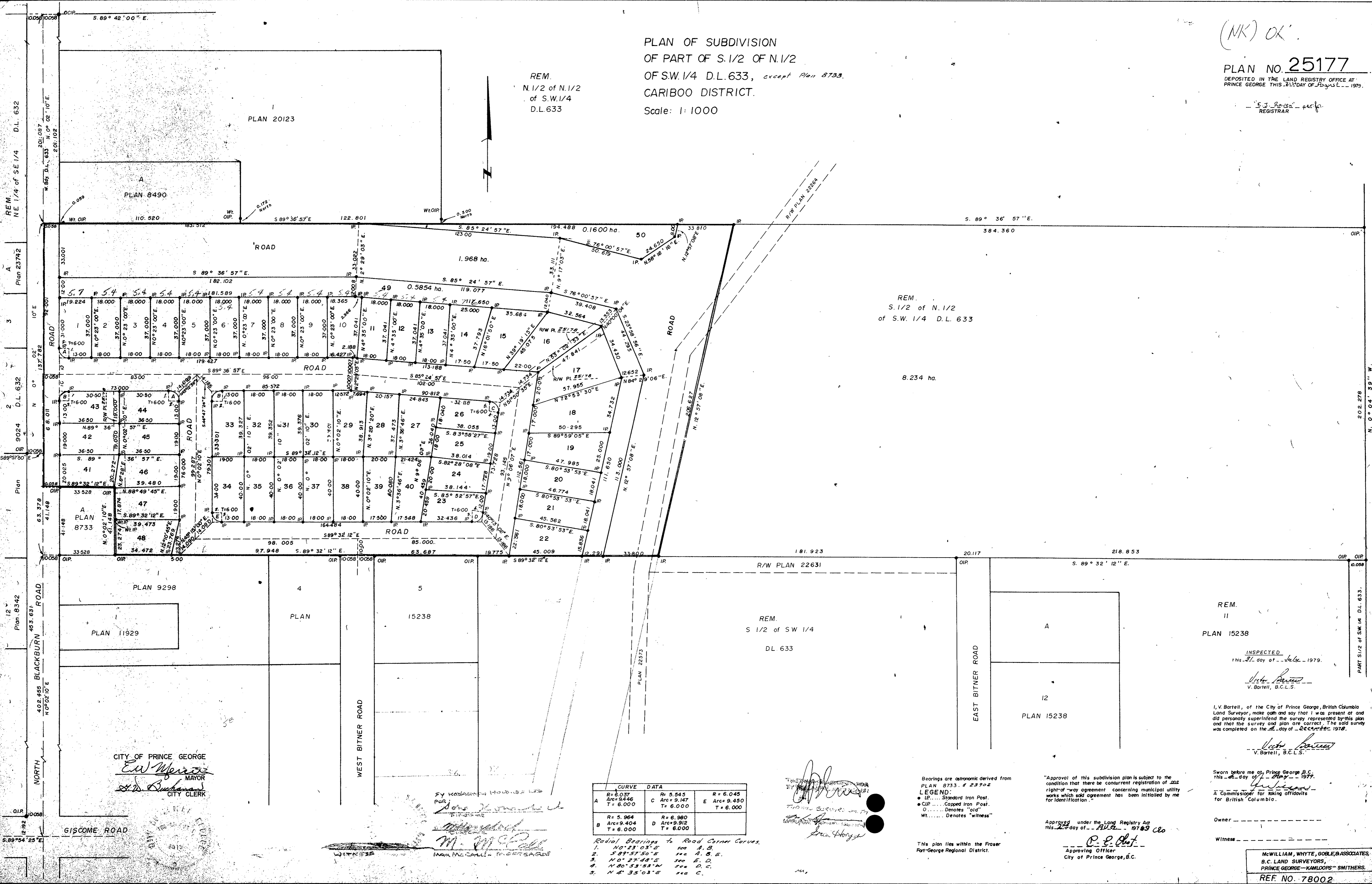
Approved under the Land Registry Act
this 21st day of August 1979
C. E. Olet
Approving Officer
City of Prince George, B.C.

Bearings are astronomic derived from
PLAN 8733 & 23902
LEGEND:
● IP..... Standard Iron Post.
● CIP..... Capped Iron Post.
○..... Denotes "old"
Wt..... Denotes "witness"

This plan lies within the Fraser
Fort-George Regional District.

CURVE DATA		
R = 6.037	Re = 5.545	R = 6.045
A Arc = 9.446	C Arc = 9.147	E Arc = 9.450
T = 6.000	T = 6.000	T = 6.000
R = 5.964	R = 6.980	
B Arc = 9.404	D Arc = 9.912	
T = 6.000	T = 6.000	

Radial Bearings to Road Corner Curves.
1. N 23° 05' E see A, B.
2. S 29° 57' 50" E see A, B, E.
3. N 0° 27' 48" E see E, D.
4. N 80° 53' 53" W see D, C.
5. N 4° 35' 03" E see C.



REM NE 1/4 of SE 1/4 D.L. 632
Plan 23742
A
3
2
1
12
Plan 8342
Plan 8733
NORTH
405.455 BLACKBURN ROAD
453.631
N 0° 02' 10" E
63.378
41.148
63.378
41.148
33.528
33.528
10058
OIP

202.278
N. 0° 04' 39" W
OIP
PART S. 1/2 of SW. 1/4 D.L. 633.

CITY OF PRINCE GEORGE
E. W. Mearns
MAYOR
S. D. Buchanan
CITY CLERK

PLAN 9298
PLAN 11929

PLAN 15238

PLAN 15238

GISCOME ROAD
S. 89° 54' 25" E

WEST BITNER ROAD
M. J. McFall
MAYOR