

PLOTTED (HM)

PLAN OF SUBDIVISION OF
LOT 2, PLAN 23520
DISTRICT LOT 343
CARIBOO DISTRICT— BRITISH COLUMBIA

SCALE: 1 : 500

NOTE: Bearings are astronomic, derived from the
north boundary of Lot 2, Plan 23520.

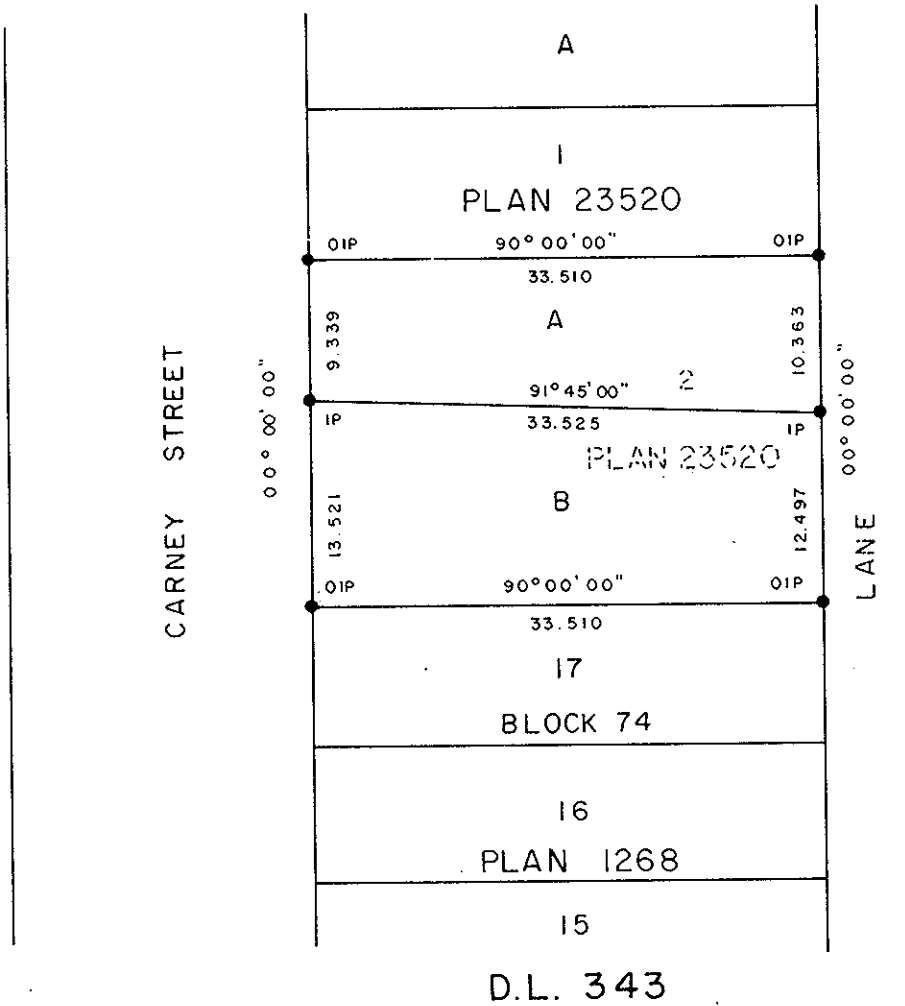
LEGEND: • OIP denotes an old iron pin found.
• IP denotes an iron pin set.

25122

PLAN N^o _____

Deposited in the Land Registry
Office at Prince George, B.C. this
27th day of July, 1979.

E.T. SCHOMLEY
Registrar



I, DONALD A. DUFFY of the City of Prince George,
a British Columbia Land Surveyor, make oath and say
that I was present at and did personally superintend
the survey represented by this plan and that the survey
and plan are correct. The said survey was completed
on the 14 day of JUNE, 1979.

D.A. Duffy
B.C.L.S.

Sworn before me this 20
day of JUNE, 1979

A Commissioner for taking Affidavits
for British Columbia.

Owner Canada Permanent Trust

Witness [Signature]

CANADA PERMANENT TRUST

Approved under the Land Registry Act
this 12 day of JULY, 1979.

C. E. Olist
Approving Officer, City of Prince George

This plan lies within the Fraser-Fort George
Regional District.

W. D. USHER & ASSOCIATES
LAND SURVEYORS
PRINCE GEORGE - B.C.
LS 66 9489

L