

26-226

25114

EXPLANATORY PLAN OF EASEMENTS THROUGH  
LOTS 17 & 25, PLAN 19529  
DISTRICT LOT 2101  
CARIBOO DISTRICT - BRITISH COLUMBIA

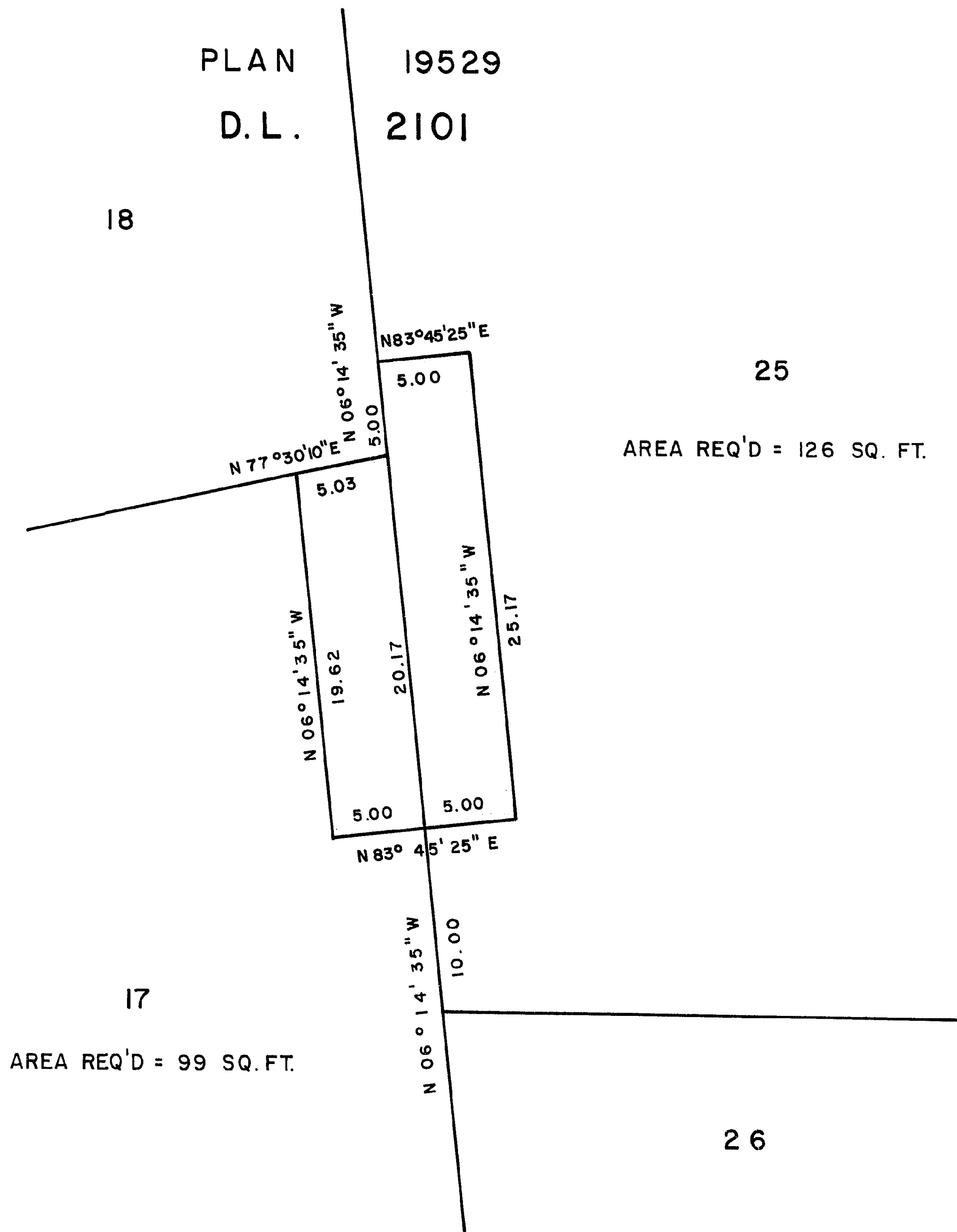
SCALE: 1" = 10'

NOTE: Bearings are astronomic, derived  
from Plan 19529.

PLAN No 25114

Deposited in the Land Registry  
Office at Prince George, B.C. this  
23<sup>rd</sup> day of July, 1979.

"E.T. SCHOONEY" per: fs  
Registrar



CERTIFIED CORRECT

According to measurements shown  
on Plan 19529.

This 15<sup>th</sup> day of June 1978.

D.A. DUFFY, B.C.L.S.

This plan lies within the Fraser-Fort George  
Regional District.

W.D. USHER & ASSOCIATES  
LAND SURVEYORS  
PRINCE GEORGE - B.C.