

26

25099

PLAN OF EASEMENT THROUGH
LOT 24, PLAN 21188
DISTRICT LOT 2100
CARIBOO DISTRICT— BRITISH COLUMBIA

SCALE: 1 : 1000

NOTE: Bearings are astronomic, derived from the
west boundary of Lot 24, Plan 21188.

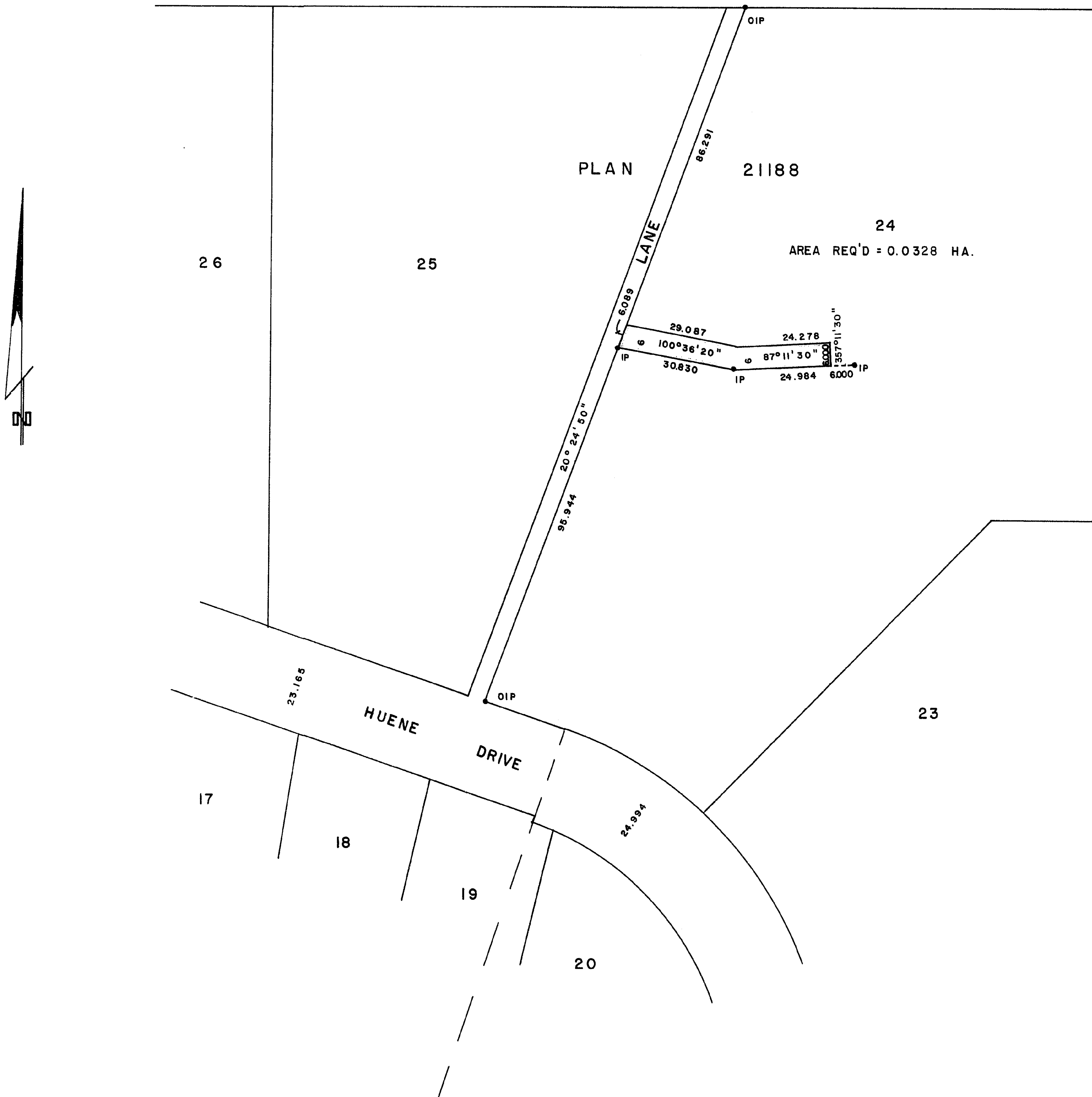
LEGEND: • OIP denotes an old iron pin found.
• IP denotes an iron pin set.

PLAN No 25099

Deposited in the Land Registry
Office at Prince George, B.C. this
20th day of July, 1979.

"E.T. SCHOOLEY" rec'd
Registrar

S.W. 1/4 D.L. 2100



I, DONALD A. DUFFY of the City of Prince George,
a British Columbia Land Surveyor, make oath and say
that I was present at and did personally superintend
the survey represented by this plan and that the survey
and plan are correct. The said survey was completed
on the 27th day of NOV., 1978.

[Signature]
B.C.L.S.

Sworn before me this 28th
day of Nov., 1978

[Signature]
A Commissioner for taking Affidavits
for British Columbia.

This plan lies within the Fraser-Fort George
Regional District.

W. D. USHER & ASSOCIATES
LAND SURVEYORS
PRINCE GEORGE — B.C.
LE 45 10510