

PLAN NO. 25046
Deposited in the Land Registry Office of
Prince George this 26th day of July 1979.

PLAN NO. 25046
Deposited in the Land Registry Office of
Prince George this 26th day of July 1979.

Registrar

REFERENCE PLAN
PURSUANT TO THE REPLOTTING PROVISIONS
OF THE MUNICIPAL ACT:

LOT 1, PLAN 24645, D.L. 662 and 343,
PARCEL "A" (EXCEPT PLAN 14112) PLAN 1391, D.L. 1511,
REM. PARCEL "C" (PLAN B 5978) of PARCEL Z, PLAN 1268, D.L. 343,
D.L. 4736,

LOTS 1 to 20, BLOCK 25, PLAN 1391, D.L. 1511,
LOTS 1 to 10, BLOCK 26, PLAN 1391, D.L. 1511,
LOTS 1 to 24, BLOCK 27, PLAN 1391, D.L. 1511,
LOTS 1 to 14, BLOCK 28, PLAN 1391, D.L. 1511,
LOTS 1 to 7, BLOCK 29, PLAN 1391, D.L. 1511,
LOTS 1 to 15, BLOCK 30, PLAN 1391, D.L. 1511,
BLOCK 31, PLAN 1391, D.L. 1511,
LOTS 1 to 20, BLOCK 32, PLAN 1391, D.L. 1511,
LOTS 1 to 28, BLOCK 33, PLAN 1391, D.L. 1511,
LOTS 1 to 20, BLOCK 35, PLAN 1391, D.L. 1511,
LOTS 1 to 20, BLOCK 36, PLAN 1391, D.L. 1511,
LOTS 9 to 24, BLOCK 39, PLAN 1391, D.L. 1511,
LOTS 1 to 24, BLOCK 40, PLAN 1391, D.L. 1511,
LOTS 1 to 24, BLOCK 41, PLAN 1391, D.L. 1511,
LOTS 1 to 24, BLOCK 42, PLAN 1391, D.L. 1511,

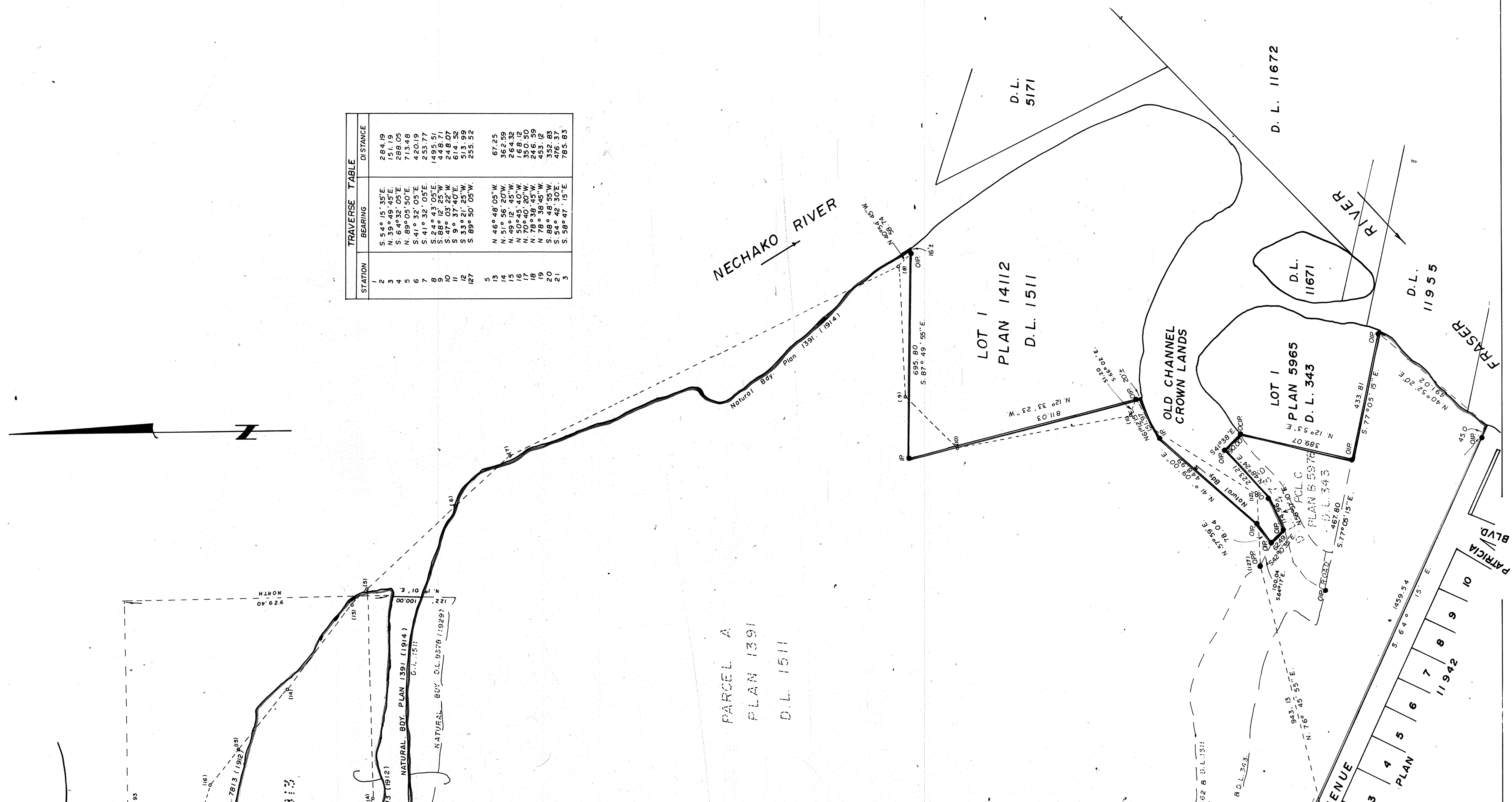
ROADS and LANES WITHIN PLAN 1391, D.L. 1511,
GAZETTED ROAD WITHIN PARCEL A, PLAN 1391, D.L. 1511,
ROAD WITHIN D.L. 4736,

D.L. 7813,
CARIBOO DISTRICT.

SCALE: 1" = 200'

TOTAL AREA WITHIN RED OUTLINE - 315.0 Ac.

STATION	BEARING	DISTANCE
2	S. 54° 15' 35" E.	284.19
3	N. 39° 49' 45" E.	151.19
4	S. 64° 32' 05" E.	288.05
5	N. 70° 40' 20" W.	174.45
6	S. 41° 32' 05" E.	420.19
7	S. 41° 32' 05" E.	253.77
8	S. 84° 43' 05" E.	1495.51
9	S. 89° 05' 52" W.	448.01
10	S. 9° 37' 40" E.	614.32
11	S. 33° 21' 25" W.	513.99
12	S. 89° 50' 05" W.	235.52
13	N. 46° 48' 05" W.	67.25
14	N. 59° 25' 20" W.	362.39
15	N. 30° 45' 40" W.	168.12
16	N. 70° 40' 20" W.	350.50
17	N. 78° 35' 45" W.	453.12
18	S. 88° 48' 55" W.	352.83
19	S. 54° 42' 30" E.	476.83
20	S. 58° 47' 15" E.	785.83
21		
22		
23		



BEARINGS ARE ASTROMERIC DERIVED FROM
PLAN 24645.

- CIP STANDARD POST IN CONCRETE
- CIP CAPPED IRON POST
- S.P.P. STANDARD PIPE POST
- I.P.P. IRON PIPE POST
- W DENOTES "OLD"
- W DENOTES "WITNESS"

"BY REASON OF THE POSSIBILITY OF FLOODING,
APPROVAL OF THIS REFERENCE PLAN IS GRANTED
CONCURRENT WITH THE REGISTRATION OF A COVENANT PURSUANT
TO SECTION 244 OF THE LAND REGISTRY ACT. EACH PAGE
OF THIS PLAN HAS BEEN INITIALED BY ME FOR IDENTIFICATION."
(SEE PLAN OF SUBDIVISION TO FOLLOW)

APPROVED UNDER THE LAND REGISTRY ACT
THIS 25th DAY OF JULY 1979.

P. E. O'Neil
APPROVING OFFICER
CITY OF PRINCE GEORGE.

SWORN BEFORE ME AT PRINCE GEORGE, B.C.
THIS 25th DAY OF JULY 1979.

V. Bartell
A COMMISSIONER FOR TAKING AFFIDAVITS
FOR BRITISH COLUMBIA.

THE SEAL OF THE CITY OF PRINCE GEORGE
WAS AFFIXED HERETO IN THE PRESENCE OF:

E. W. McEwen
MAYOR

S. D. Buchanan
CITY CLERK

THIS PLAN LIES WITHIN THE FRASER FORT-GEORGE
REGIONAL DISTRICT.

McWILLIAM, WHYTE, GOBLE & ASSOCIATES,
B.C. LAND SURVEYORS,
PRINCE GEORGE-KAMLOOPS-SMITHERS

REF. NO. 78169.