

26

25011

PLAN OF EASEMENT THROUGH  
LOT A, PLAN 18746  
DISTRICT LOT 4041  
CARIBOO DISTRICT—BRITISH COLUMBIA

SCALE: 1 : 1000'

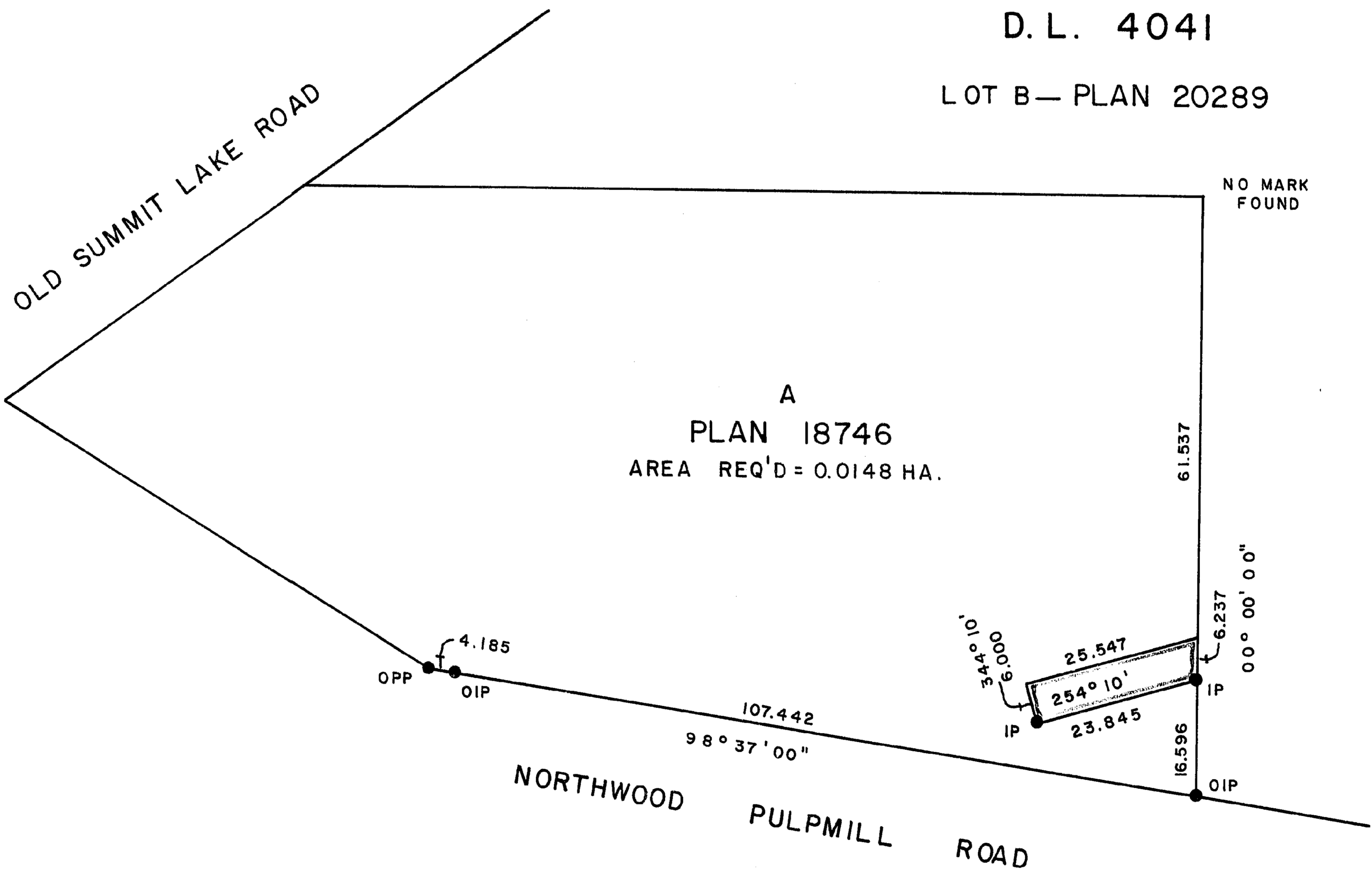
NOTE: Bearings are astronomic, derived from the  
south boundary of Lot A, Plan 18746.

LEGEND: ● OPP denotes an old pipe post found.  
● OIP denotes an old iron pin found.  
● IP denotes an iron pin set.

PLAN N<sup>o</sup> 25011

Deposited in the Land Registry  
Office at Prince George, B.C. this  
26<sup>th</sup> day of June, 1979.

"E.T. SCHODNEY" per: fg.  
Registrar



I, DONALD A. DUFFY of the City of Prince George,  
a British Columbia Land Surveyor, make oath and say  
that I was present at and did personally superintend  
the survey represented by this plan and that the survey  
and plan are correct. The said survey was completed  
on the 26 day of June, 1979.

B.C.L.S.

Sworn before me this 2  
day of July, 1979

A Commissioner for taking Affidavits  
for British Columbia.

This plan lies within the Fraser-Fort George  
Regional District.

W. D. USHER & ASSOCIATES  
LAND SURVEYORS  
PRINCE GEORGE — B.C.  
LN 65 9602