

PLAN OF SUBDIVISION OF PART OF
S.W. 1/4 DISTRICT LOT 632
CARIBOO DISTRICT - BRITISH COLUMBIA

SCALE: 1 : 1000

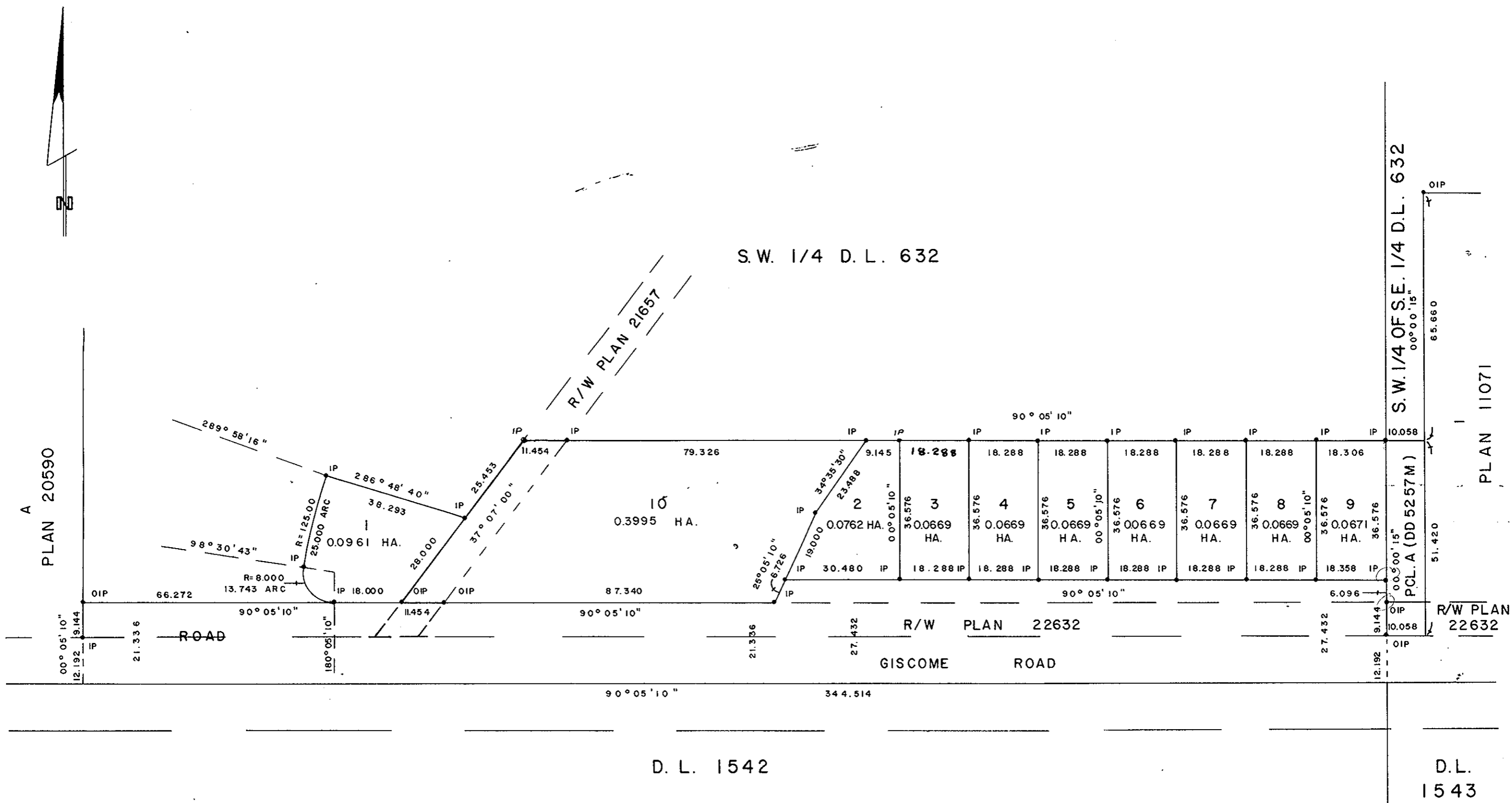
NOTE: Bearings are astronomic, derived from the south
boundary of SW.1/4 D.L. 632 as shown on Plan 22632.

LEGEND: •OIP denotes an old iron pin found.
•IP denotes an iron pin set.

PLAN No. 25006

Deposited in the Land Registry
Office at Prince George, B.C. this
22nd day of June, 1978

"E.T. SCHOOLEY"
Registrar



I, DONALD A. DUFFY of the City of Prince George,
a British Columbia Land Surveyor, make oath and say
that I was present at and did personally superintend
the survey represented by this plan and that the survey
and plan are correct. The said survey was completed
on the 16 day of JUNE, 1978

[Signature]
B.C.L.S.

Sworn before me this 20
day of July, 1978

A Commissioner for taking Affidavits
for British Columbia.

Owner *Abel Beetsch*

Witness *Carol A. Harrington*

REGIONAL DISTRICT OF
FRASER - FORT GEORGE

[Signature]
CHAIRMAN
[Signature]
SECRETARY

CITY OF PRINCE GEORGE

[Signature]
Mayor

[Signature]
Clerk

Approved under the Land Registry Act
this 21st day of MAR., 1978.

[Signature]
Approving Officer, City of Prince George

This plan lies within the Fraser-Fort George
Regional District.

W. D. USHER & ASSOCIATES
LAND SURVEYORS
PRINCE GEORGE - B.C.
LG 9 7757