

PLAN OF SUBDIVISION OF PART OF  
 LOT 1, PLAN 24819  
 DISTRICT LOTS 1574 & 2440  
 CARIBOO DISTRICT— BRITISH COLUMBIA

25003

SCALE: 1 : 1000

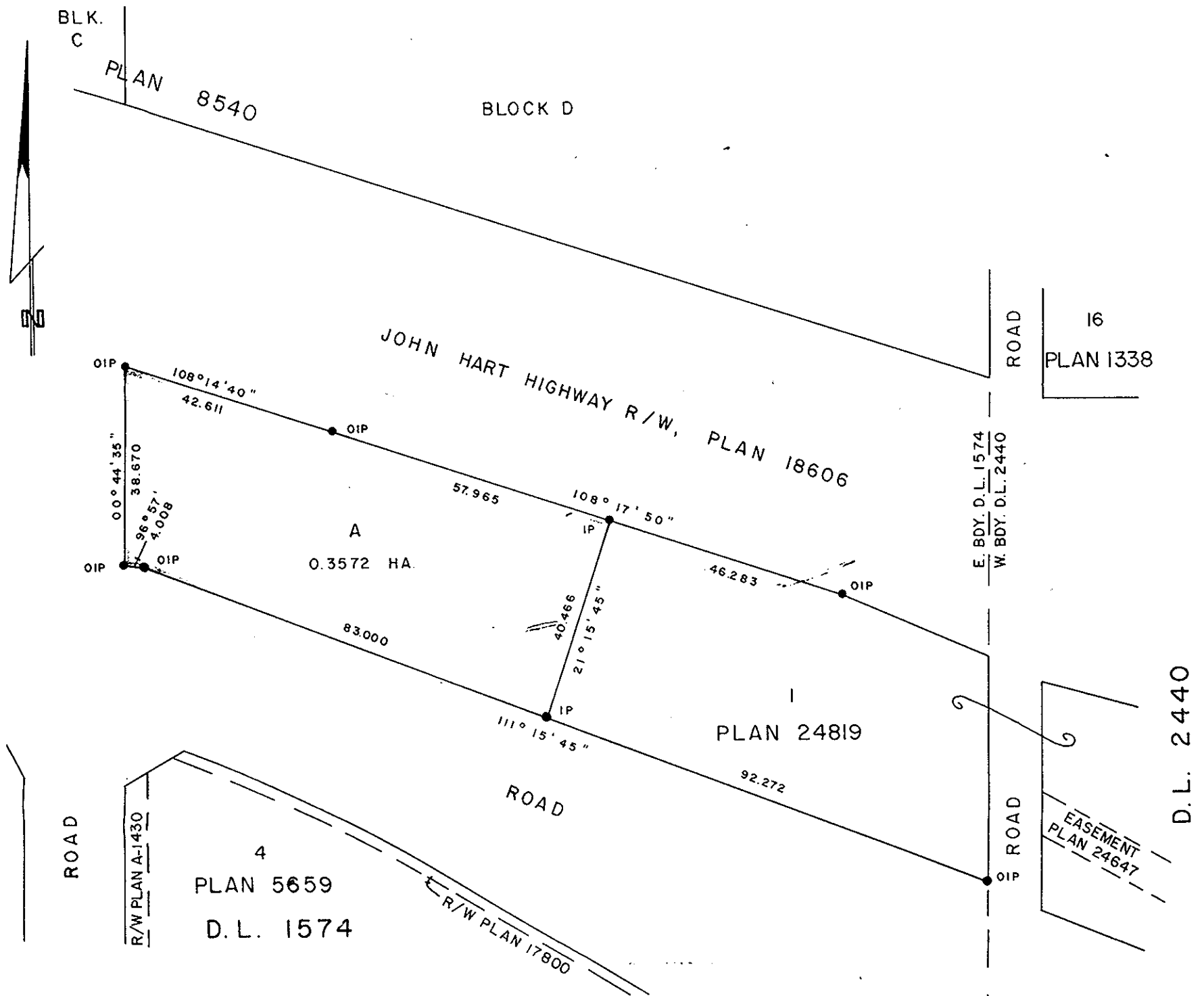
NOTE: Bearings are astronomic, derived from the south boundary of Lot 1, Plan 24819.

LEGEND: ●OIP denotes an old iron pin found.  
 ●IP denotes an iron pin set.

PLAN N<sup>o</sup> -----

Deposited in the Land Registry Office at Prince George, B.C. this 21<sup>st</sup> day of June, 1979

"E.T. SCHOOLEY"  
 Registrar



I, DONALD A. DUFFY of the City of Prince George, a British Columbia Land Surveyor, make oath and say that I was present at and did personally superintend the survey represented by this plan and that the survey and plan are correct. The said survey was completed on the 15th day of May, 1979.

*[Signature]*  
 Mortgagee

RIVERVIEW MOTEL LTD.

Approved under the Land Registry Act this 12 day of JUNE, 1979

*[Signature]*  
 Witness

*[Signature]*  
 Approving Officer, City of Prince George

Sworn before me this 28 day of MAY, 1979

*[Signature]*  
 A Commissioner for taking Affidavits for British Columbia.

*[Signature]*  
 Mortgagee

This plan lies within the Fraser-Fort George Regional District.

Witness