

EXPLANATORY PLAN OF
RIGHT-OF-WAY THROUGH
LOT 1, PLAN 24171
DISTRICT LOT 620
CARIBOO DISTRICT-BRITISH COLUMBIA

SCALE: 1 : 1000

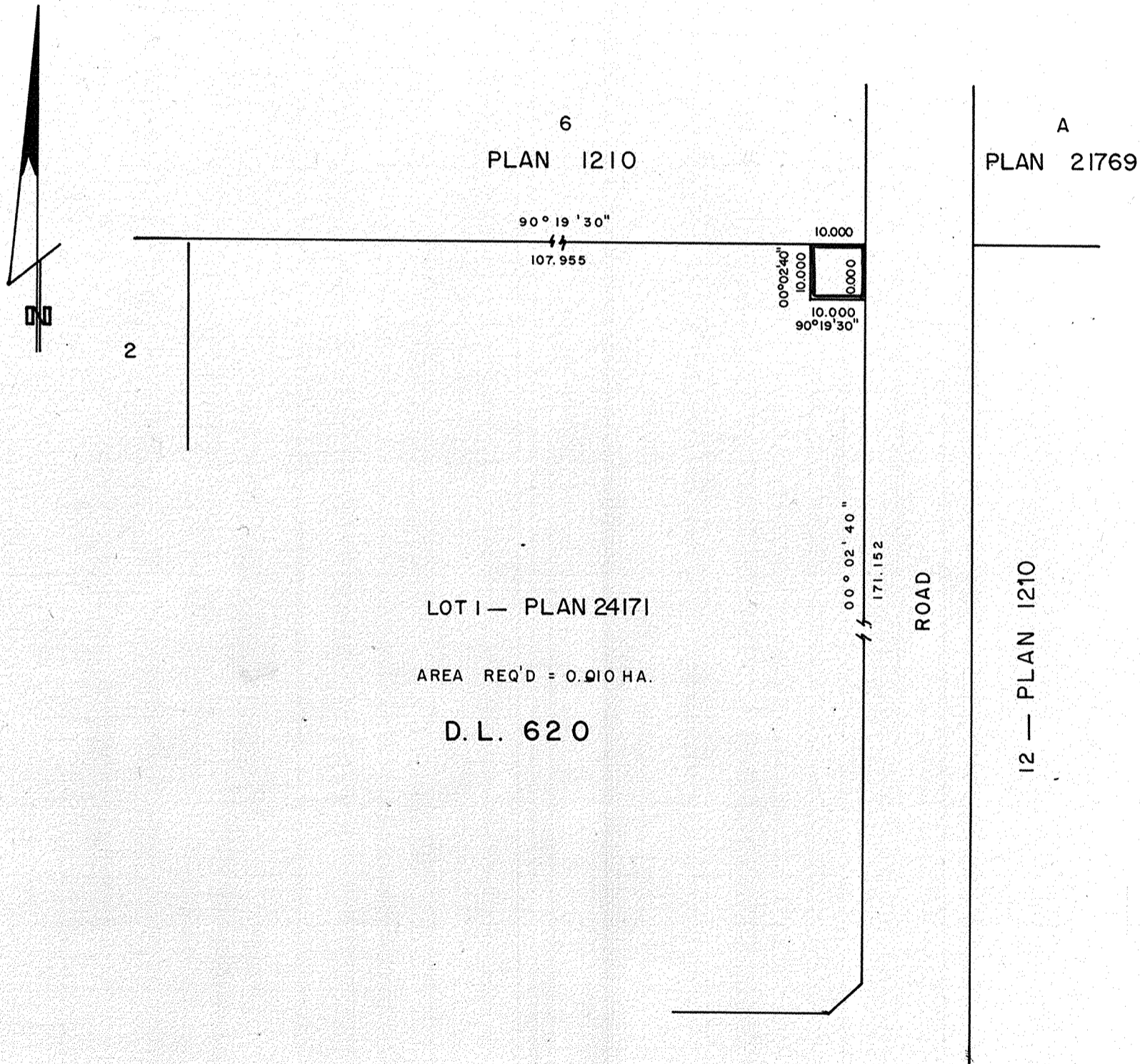
NOTE: Bearings are astronomic, derived from the
north boundary of Lot 1, Plan 24171.

24997

PLAN No _____

Deposited in the Land Registry
Office at Prince George, B.C. this
19th day of June, 1979.

E.T. Schooner
Registrar



LOT 1 — PLAN 24171

AREA REQ'D = 0.910 HA.

D.L. 620

CERTIFIED CORRECT

According to measurements shown
on Plan 24171.
This 15 day of June, 1979.

D.A. Duffy
D.A. DUFFY, B.C.L.S.

This plan lies within the Fraser-Fort George
Regional District.

W.D. USHER & ASSOCIATES
LAND SURVEYORS
PRINCE GEORGE — B.C.