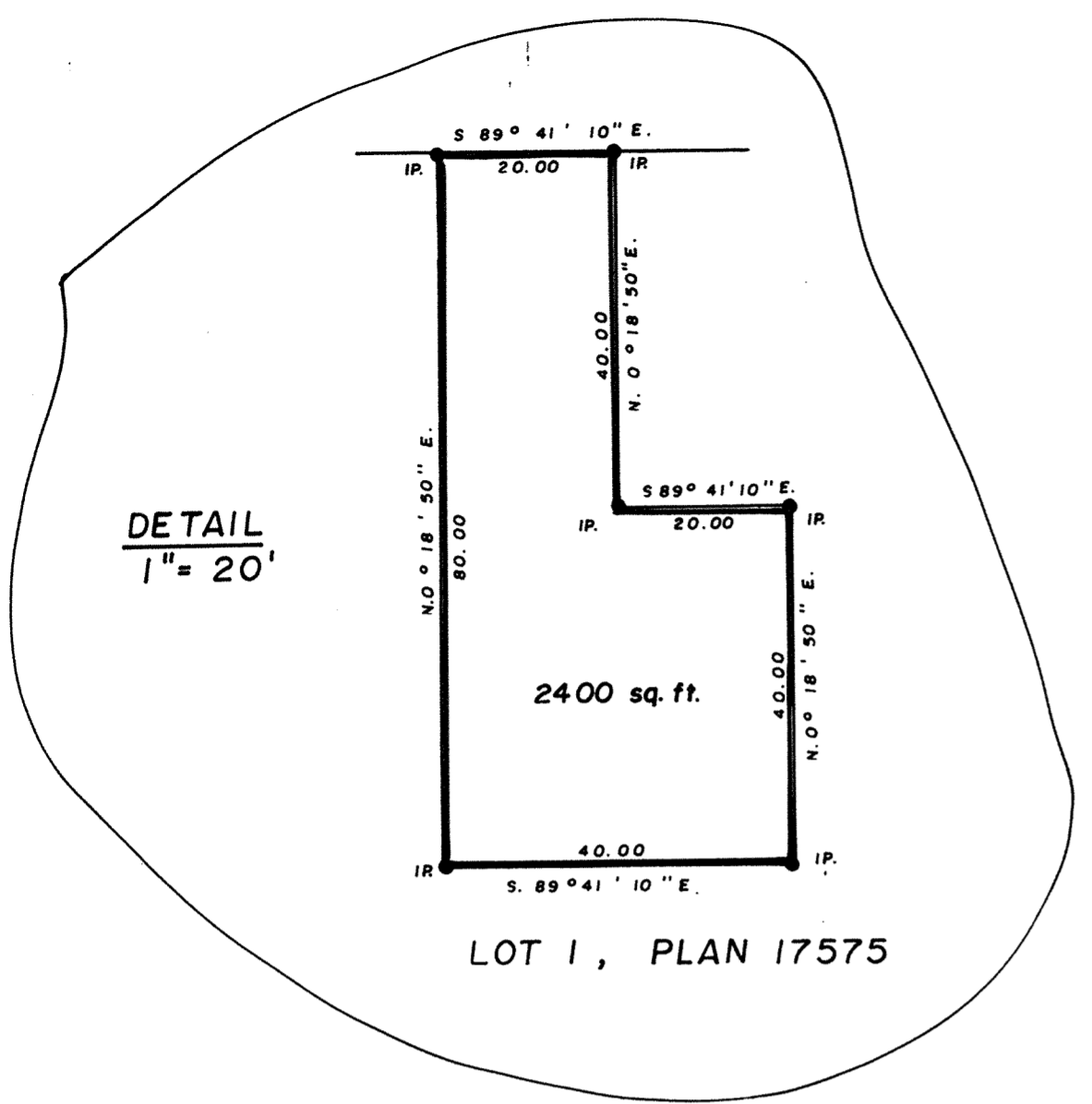
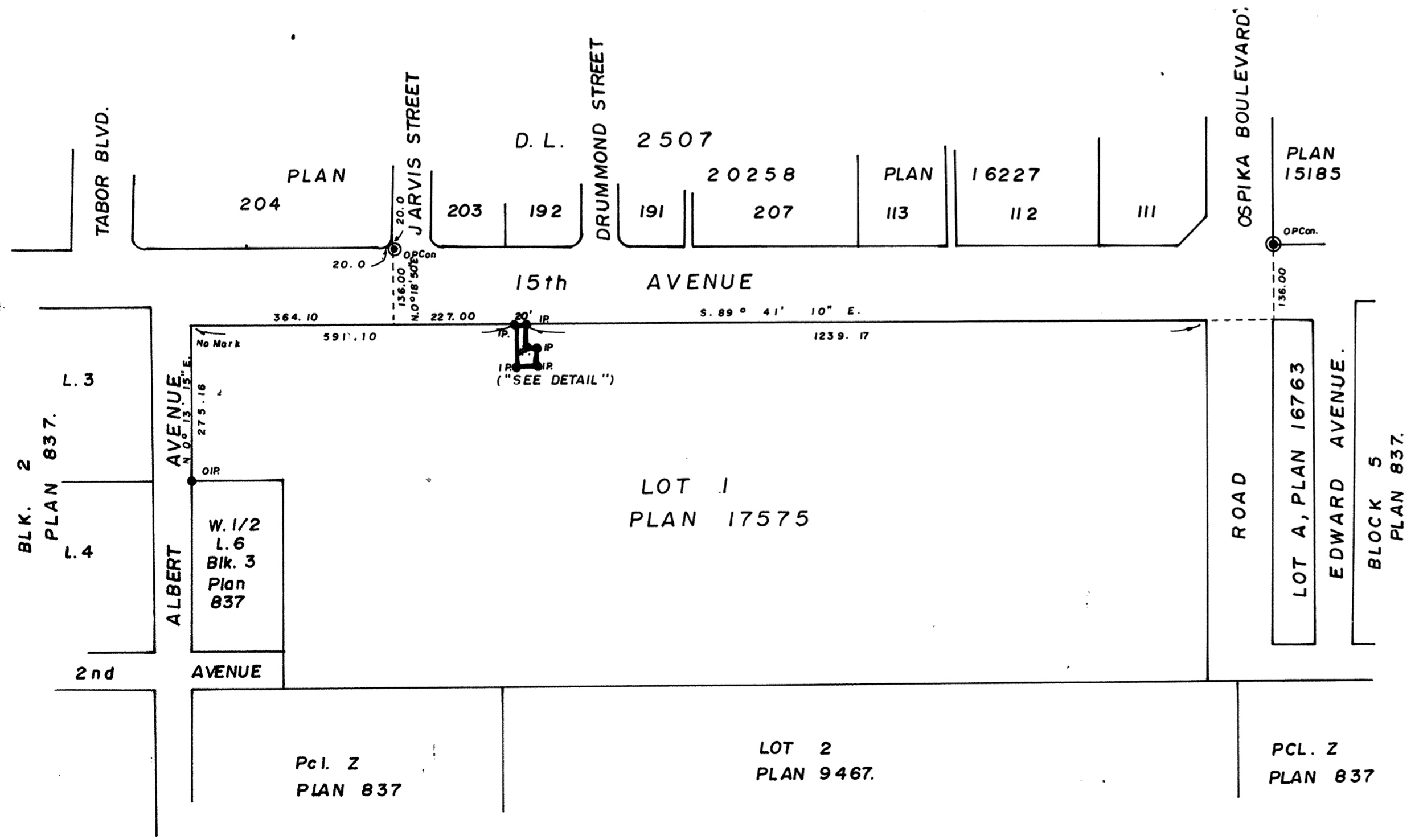


PLAN NO 24976
DEPOSITED IN THE LAND REGISTRY OFFICE AT
PRINCE GEORGE THIS 22nd DAY OF ~~June~~ 1978

"E.T. Schooney"
REGISTRAR



REFERENCE PLAN TO ACCOMPANY
LEASE OF PART OF LOT 1, PLAN 17575,
DISTRICT LOT 2508, CARIBOO DISTRICT.
Scale: 1" = 200'



Bearings are astronomic derived from
Plan 17575.

- P. Con. Post in Concrete
- IP. Standard Iron Post.
- O. Denotes "old"

Approved under the Land Registry Act
this 5th day of JUNE 1978

C. E. Obit.
Approving Officer
City of Prince George.

The Seal of the City of Prince George
was affixed hereto in the presence of:

Mayor *E. W. Meier*
City Clerk *A. D. Buchanan*

I, V. Bartell, of the City of Prince George,
British Columbia Land Surveyor make oath and
say that I was present at and did personally
superintend the survey represented by this plan
and that the survey and plan are correct.
The said survey was completed on the
22nd day of September 1978.

V. Bartell
V. Bartell B.C.L.S.

Sworn before me at Prince George, B.C.,
this 22nd day of September 1978.

[Signature]
A Commissioner for taking affidavits
for British Columbia.

McWilliam Whyte Gable & Associates,
B.C. Land Surveyors,
Prince George - Kamloops - Smithers.

REF. NO. 78140.