

PLAN OF SUBDIVISION OF LOTS 11 and 12, BLOCK 72, PLAN 752, AND PART OF CLOSED ROAD, BY-LAW PLAN 23191, BLOCK 72, D.L. 937, CARIBOO DISTRICT.

PLAN NO. 24945

Deposited in the Land Registry Office at Prince George this 22nd day of July 1979.

E.T. Schooley Registrar.

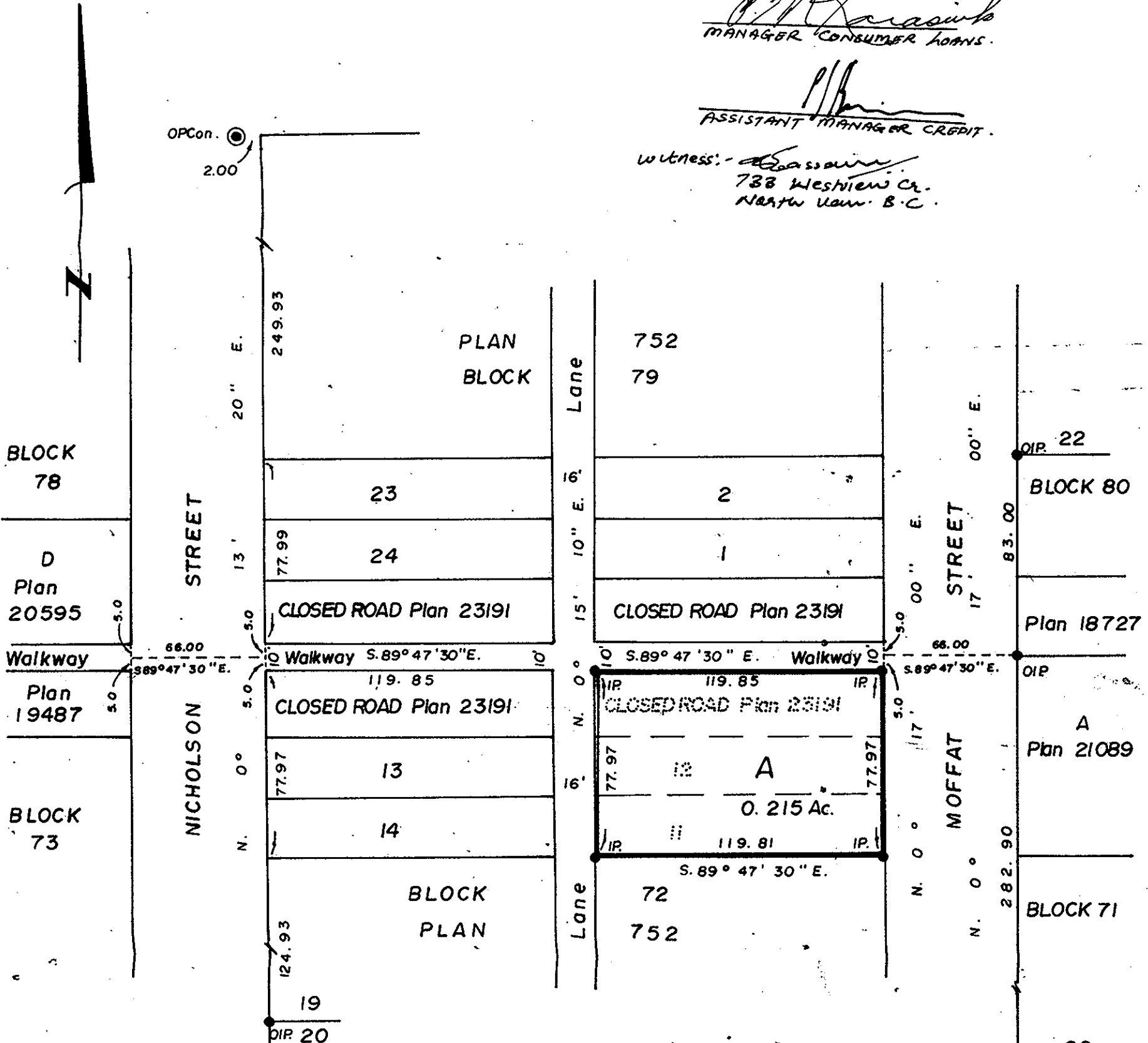
Scale: 1" = 50'

BANK OF MONTREAL BY ITS ATTORNEYS.

J. M. Krasinski MANAGER CONSUMER LOANS.

ASSISTANT MANAGER CREDIT.

Witness: 738 Westview Cr. Neww. Van. B.C.



I, V. Bartell, of the City of Prince George, British Columbia Land Surveyor make oath and say that I was present at and did personally superintend the survey represented by this plan and that the survey and plan are correct.

The said survey was completed on the 24th day of July 1978. V. Bartell, B.C.L.S.

CENTRAL MORTGAGE AND HOUSING CORPORATION Owner of Mortgage. [Signature] Director of Administration

Owner [Signature]

Bearings are astronomic derived from Plan 21089. IP..... Standard Iron Post. P.Con..... Standard Post in Concrete. O..... Denotes "old"

Witness [Signature]

Sworn before me at Prince George, B.C. this 24th day of July 1978. [Signature] A Commissioner for taking affidavits for British Columbia.

Approved under the Land Registry Act this 4th day of AUG 1978. [Signature] Approving Officer Reapproved Apr. 5, 1979 C. E. Olat.

This plan lies within the Fraser Fort-George Regional District.

McWilliam, Whyte, Goble, & Associates, B.C. Land Surveyors, Prince George - Kamloops - Smithers. REF. NO. 78084-D.