

26

24928

# PLAN OF RIGHT OF WAY OVER PART OF DISTRICT LOT 955, CARIBOO DISTRICT.

SCALE 1:1000

## PLAN 24928

DEPOSITED IN THE LAND REGISTRY OFFICE AT PRINCE GEORGE, B.C. THIS 22<sup>nd</sup> DAY OF July, 1979

E. J. Fleischer REGISTRAR

### LEGEND:

BEARINGS ARE ASTRONOMIC AND DERIVED FROM PLAN A 989.  
ALL DISTANCES ARE IN METRES EXCEPT WHERE OTHERWISE NOTED

- O.I.P. DENOTES OLD IRON POST FOUND.
- I.P. DENOTES STANDARD IRON POST SET
- △ T.H. TRAVERSE HUB

THIS PLAN LIES WITHIN THE FRASER-FORT GEORGE REGIONAL DISTRICT

I, DAVID P. JOHANSEN OF NORTH VANCOUVER, BRITISH COLUMBIA LAND SURVEYOR, MAKE OATH AND SAY THAT I WAS PRESENT AT AND DID PERSONALLY SUPERINTEND THE SURVEY REPRESENTED BY THIS PLAN AND THAT THE SURVEY AND PLAN ARE CORRECT. THE SAID SURVEY WAS COMPLETED ON THE 9<sup>th</sup> DAY OF DECEMBER, 1978.

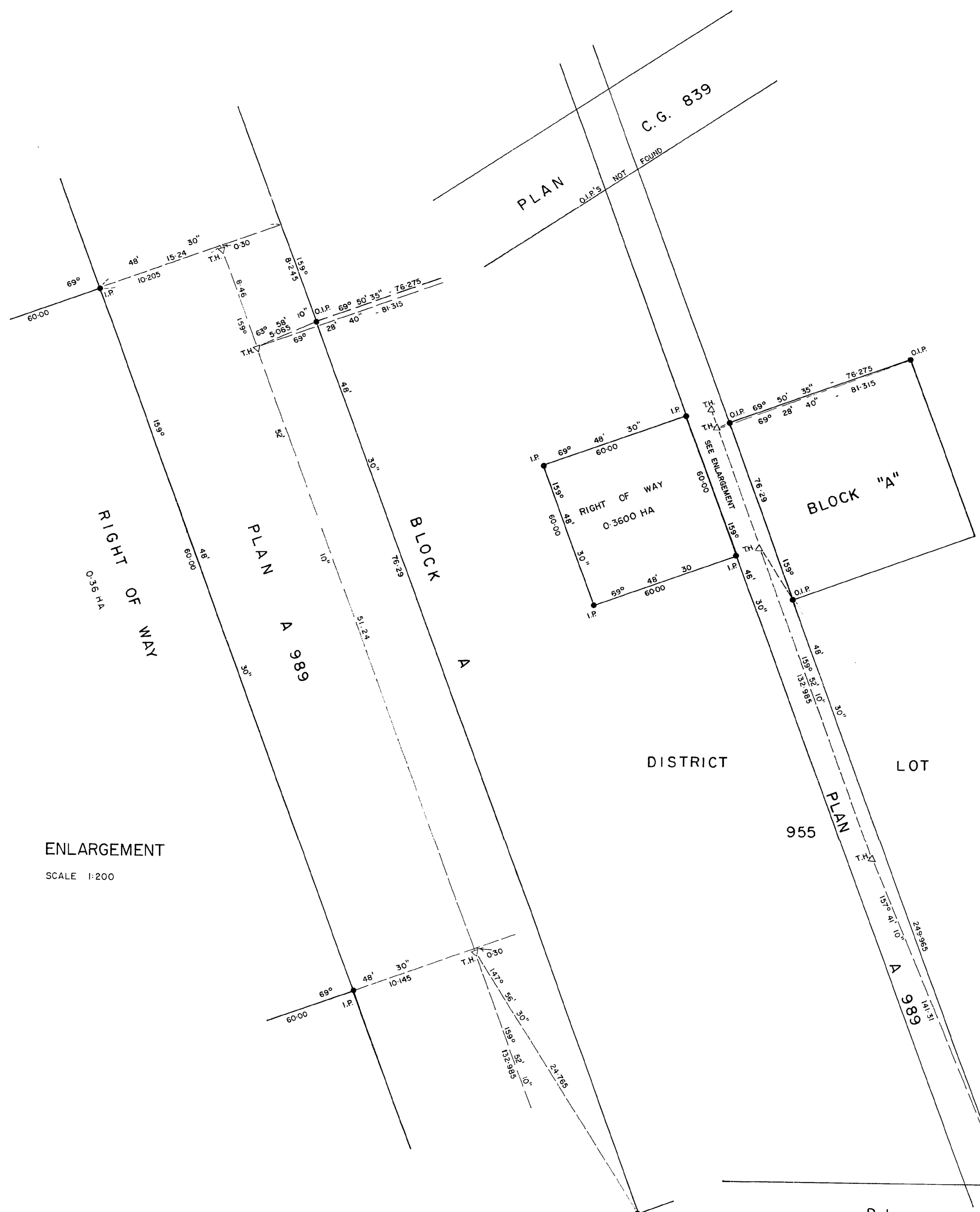
David P. Johansen B.C.L.S.

SWORN BEFORE ME THIS 31<sup>st</sup> DAY OF JANUARY, 1979

E. J. Fleischer  
A COMMISSIONER FOR TAKING AFFIDAVITS WITHIN THE PROVINCE OF BRITISH COLUMBIA.

I hereby certify that this is a true copy of the Official Plan on deposit with the Surveyor General, Ministry of Lands, Parks and Housing, and numbered 23 tube 772.

P. C. Horne  
Surveyor General, Victoria, B.C.  
May 10, 1979



### ENLARGEMENT

SCALE 1:200

BOOK OF REFERENCE	
DESCRIPTION	AREA
PART OF D.L. 955	0.3600 HA

PLAN M 125

• PUBLIC WORKS CANADA  
PROPERTY SERVICES BRANCH, VANCOUVER, B.C.  
G.B.C. REPEATER SITE  
PRINCE GEORGE  
FILE 15530-P16/33 # 817  
DRAWN: WH. DATE: 10/1/79 PROJECT: 014448

(D) B.C. 1315