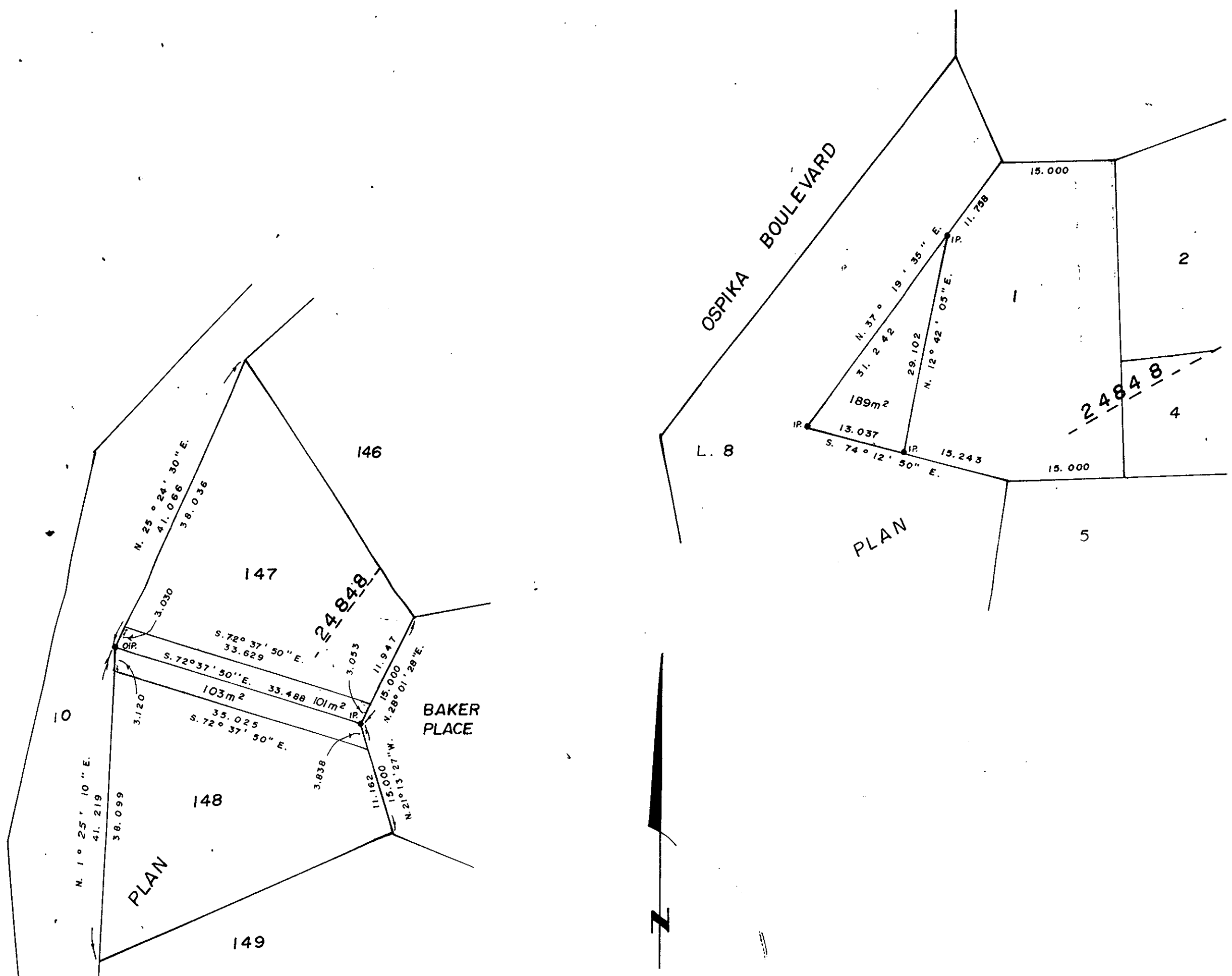


PLAN NO. 24848
 DEPOSITED IN THE LAND REGISTRY OFFICE AT
 PRINCE GEORGE THIS 4th DAY OF May 1979.

"E.T. SCHOOLEY"
 REGISTRAR



BOOK of REFERENCE	
Description	Area.
Lot 1, Plan <u>24848</u>	189 m ²
Lot 147, Plan <u>24848</u>	101 m ²
Lot 148, Plan <u>24848</u>	103 m ²

CITY of PRINCE GEORGE, B.C.
 PLAN OF RIGHT-OF-WAY
 IN LOTS 1, 147 AND 148,
 PLAN 24848 D.L. 905,
 CARIBOO DISTRICT.
 SCALE: 1:500

BEARINGS ARE ASTRONOMIC DERIVED FROM
 PLAN 24848

*IP.....STANDARD IRON POST.
 O.....DENOTES "OLD"

I, V. BARTELL, OF THE CITY OF PRINCE GEORGE,
 BRITISH COLUMBIA LAND SURVEYOR, MAKE OATH
 AND SAY THAT I WAS PRESENT AT AND DID PERSONALLY
 SUPERINTEND THE SURVEY REPRESENTED BY THIS PLAN
 AND THAT THE SURVEY AND PLAN ARE CORRECT.
 THE SAID SURVEY WAS COMPLETED ON THE
8 DAY OF December 1978.

V. Bartell
 V. BARTELL B.C.L.S.

SWORN BEFORE ME AT PRINCE GEORGE, B.C.
 THIS 2 DAY OF February 1979.

[Signature]
 A COMMISSIONER FOR TAKING AFFIDAVITS
 FOR BRITISH COLUMBIA.

THIS PLAN LIES WITHIN THE FRASER
 FORT GEORGE REGIONAL DISTRICT.

McWILLIAM, WHYTE, GOBLE, & ASSOCIATES
 B.C. LAND SURVEYORS,
 PRINCE GEORGE - KAMLOOPS - SMITHERS.
 REF. NO. 78042 B

D.L. 905.