

PLAN OF SUBDIVISION OF PART OF
 LOT 1, PLAN 17945
 DISTRICT LOT 1432
 CARIBOO DISTRICT - BRITISH COLUMBIA
 SCALE: 1 : 500

NOTE: Bearings are astronomic, derived from the
 north boundary of Lot 1, Plan 17945.

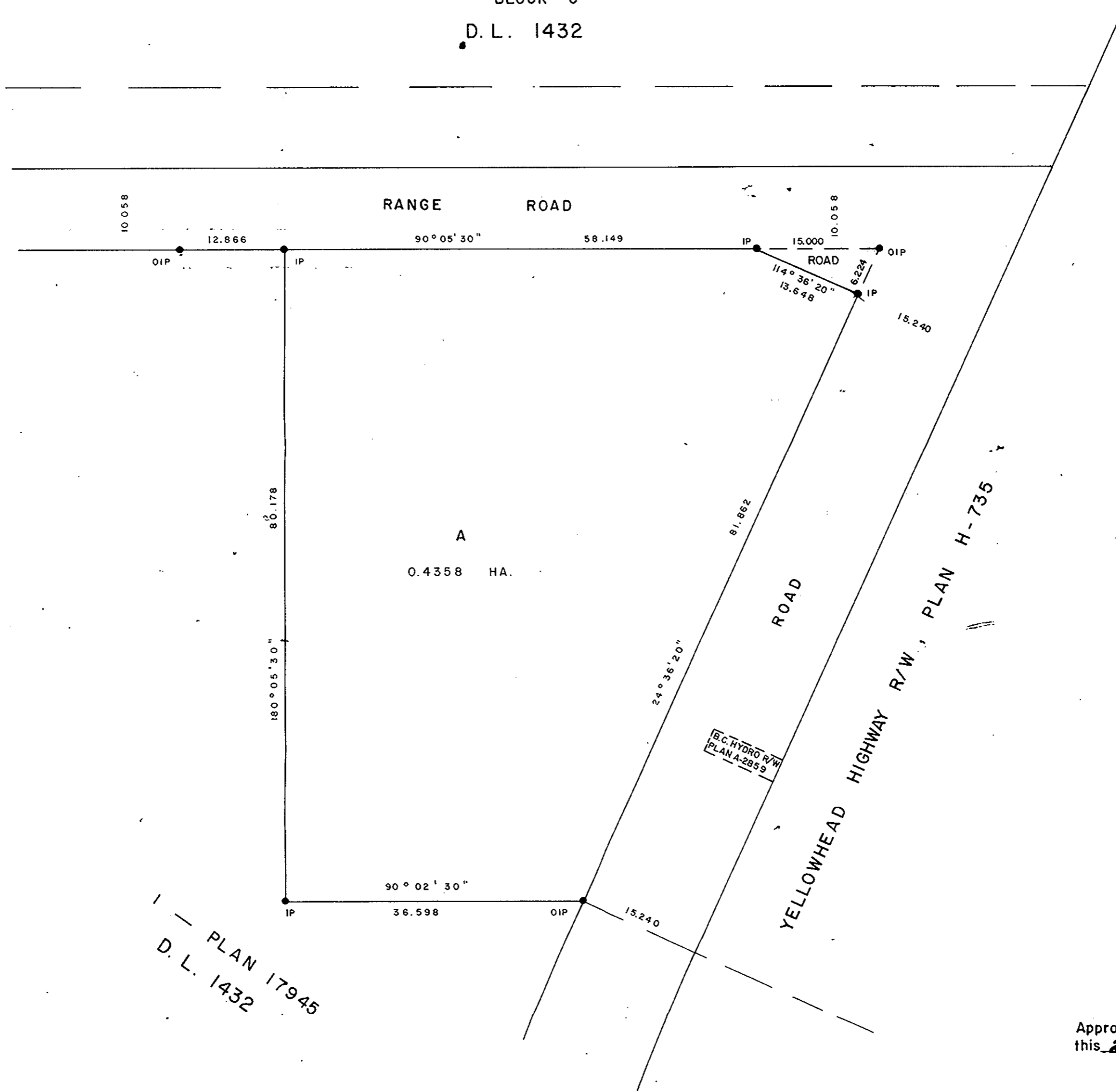
LEGEND: ● OIP denotes an old iron pin found.
 ● IP denotes an iron pin set.

24889

PLAN No. 24889
 Deposited in the Land Registry
 Office at Prince George, B.C. this
 3rd day of May, 1979

"E.T. Schooley"
 Registrar

BLOCK C
 D.L. 1432



PLAN 17945
 D.L. 1432

B.C. HIGHWAY R/W
 PLAN A-2959

YELLOWHEAD HIGHWAY R/W, PLAN H-735

I, DONALD A. DUFFY of the City of Prince George,
 a British Columbia Land Surveyor, make oath and say
 that I was present at and did personally superintend
 the survey represented by this plan and that the survey
 and plan are correct. The said survey was completed
 on the 5th day of February, 1979.

[Signature]
 B.C.L.S.

Sworn before me this 8th
 day of FEB, 1979

[Signature]
 A Commissioner for taking Affidavits
 for British Columbia.

GREAT WEST AUTO
 ACCESSORIES LTD.

[Signature]
 PRESIDENT

Approved under the Land Registry Act
 this 2nd day of May, 1979

[Signature]
 Approving Officer, Ministry of Highways
 and Public Works.

Approved under the Land Registry Act
 this 25th day of APR, 1979

[Signature]
 Approving Officer, City of Prince George

This plan lies within the Fraser-Fort George
 Regional District.