

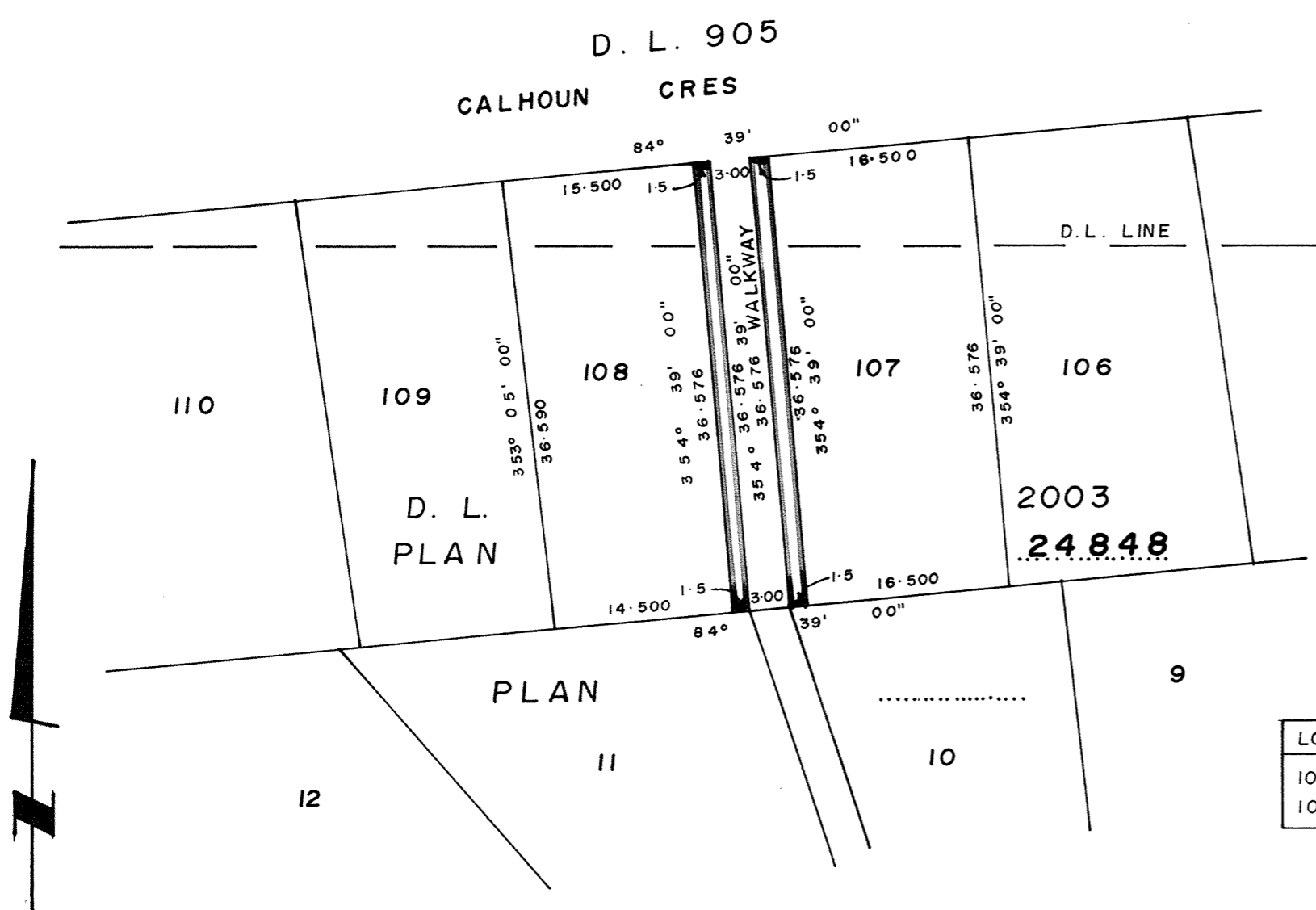
PLAN NO. 24883

Deposited in the Land Registry Office at Prince George this 1st day of May 1978

"E.T. SCHOOLEY"
Registrar

EXPLANATORY PLAN OF RIGHT OF WAY
IN LOTS 107 & 108 PLAN 24848
D.L. 905 & 2003 CARIBOO DISTRICT

SCALE : 1:500 1cm. = 5m.
DISTANCES ARE IN METRES & DECIMALS THEREOF.



BOOK OF REFERENCE

LOT	DISTRICT LOT	AREA
107	D.L. 905 & 2003	54.864Sq.m
108	D.L. 905 & 2003	54.864Sq.m

CERTIFIED CORRECT
ACCORDING TO LAND REGISTRY OFFICE RECORDS.
THIS 8 DAY OF December 1978.

V. Bartell
V. BARTELL B.C.L.S.

THIS PLAN LIES WITHIN THE FRASER FORT GEORGE REGIONAL DISTRICT.

McWILLIAM - WHYTE - GOBLE & ASSOCIATES
B.C. LAND SURVEYORS
PRINCE GEORGE - KAMLOOPS - SMITHERS
REF. NO. 77100 - 23

D. L. 905 & 2003

38848

38848