

PLOTTED (HL)

POSTING PLAN OF PARTS OF
LOTS 8 & 13, BLOCK 272, PLAN 1268
DISTRICT LOT 343
CARIBOO DISTRICT—BRITISH COLUMBIA

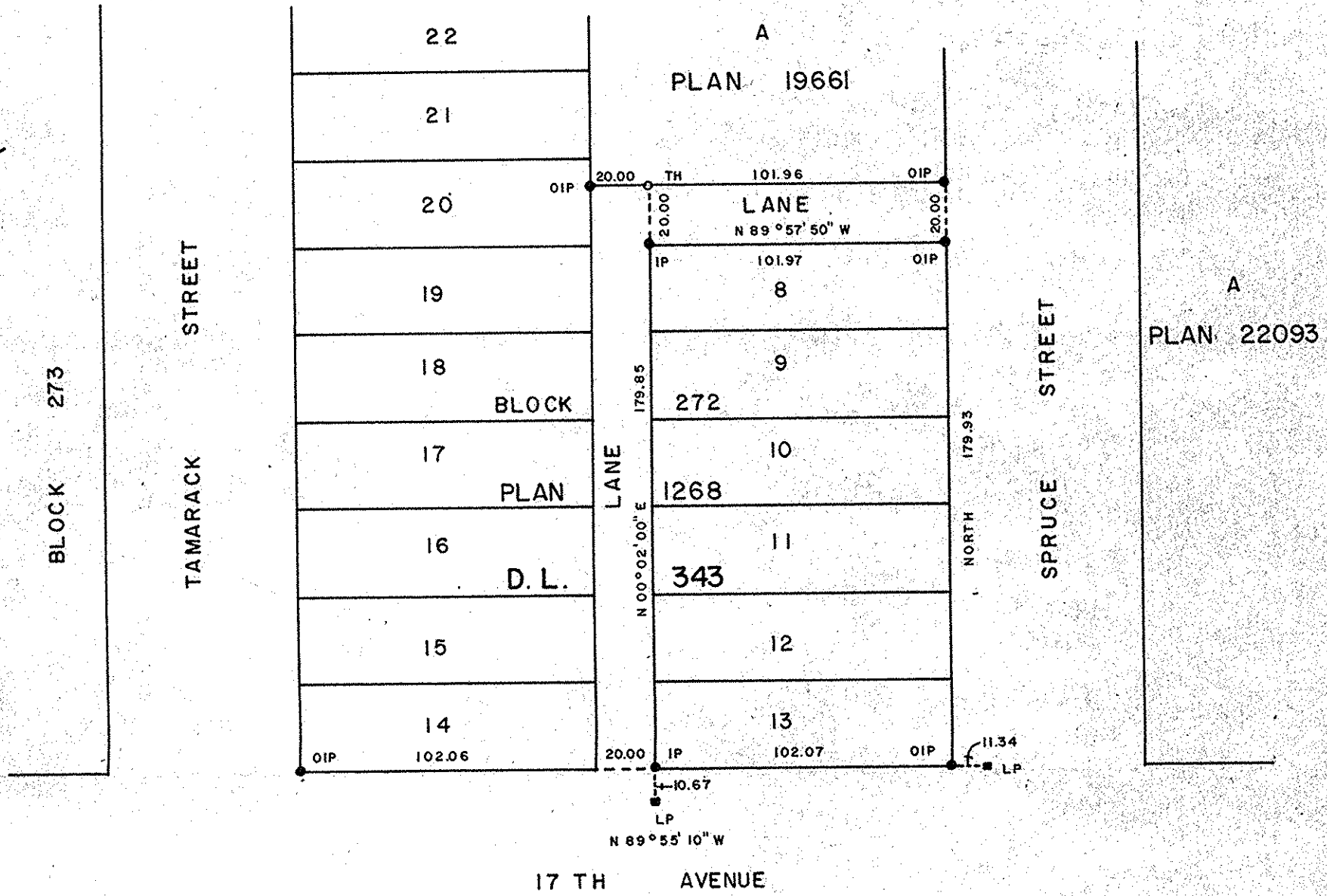
SCALE: 1" = 50'

PLAN No. 24870

Deposited in the Land Registry
Office at Prince George, B.C. this
27th day of April, 1979.

NOTE: Bearings are astronomic, derived from the west
boundary of Spruce Street as shown on Plan 19661.

- LEGEND:
- OIP denotes an old iron pin found.
 - LP denotes a lead plug set.
 - IP denotes an iron pin set.
 - TH denotes traverse hub.



BLOCK 277

BLOCK

278

BLOCK 279

CERTIFIED CORRECT

This 25 day of April, 1979.

[Signature]
D. A. DUFFY, B.C.L.S.

W. D. USHER & ASSOCIATES
LAND SURVEYORS
PRINCE GEORGE — B. C.
L.M. 34 10693