

26

24823

PLAN OF RIGHTS-OF-WAY THROUGH
LOTS 20, 21, 61, 62, 77 & 78, PLAN 24376
DISTRICT LOT 4046 &
S.W. 1/4 DISTRICT LOT 4046
CARIBOO DISTRICT - BRITISH COLUMBIA

SCALE: 1 : 500

NOTE: Bearings are astronomic, derived from the south
boundary of Lot 21 and the east boundary of Lot
77, Plan 24376.

LEGEND: ● OIP denotes an old iron pin found.

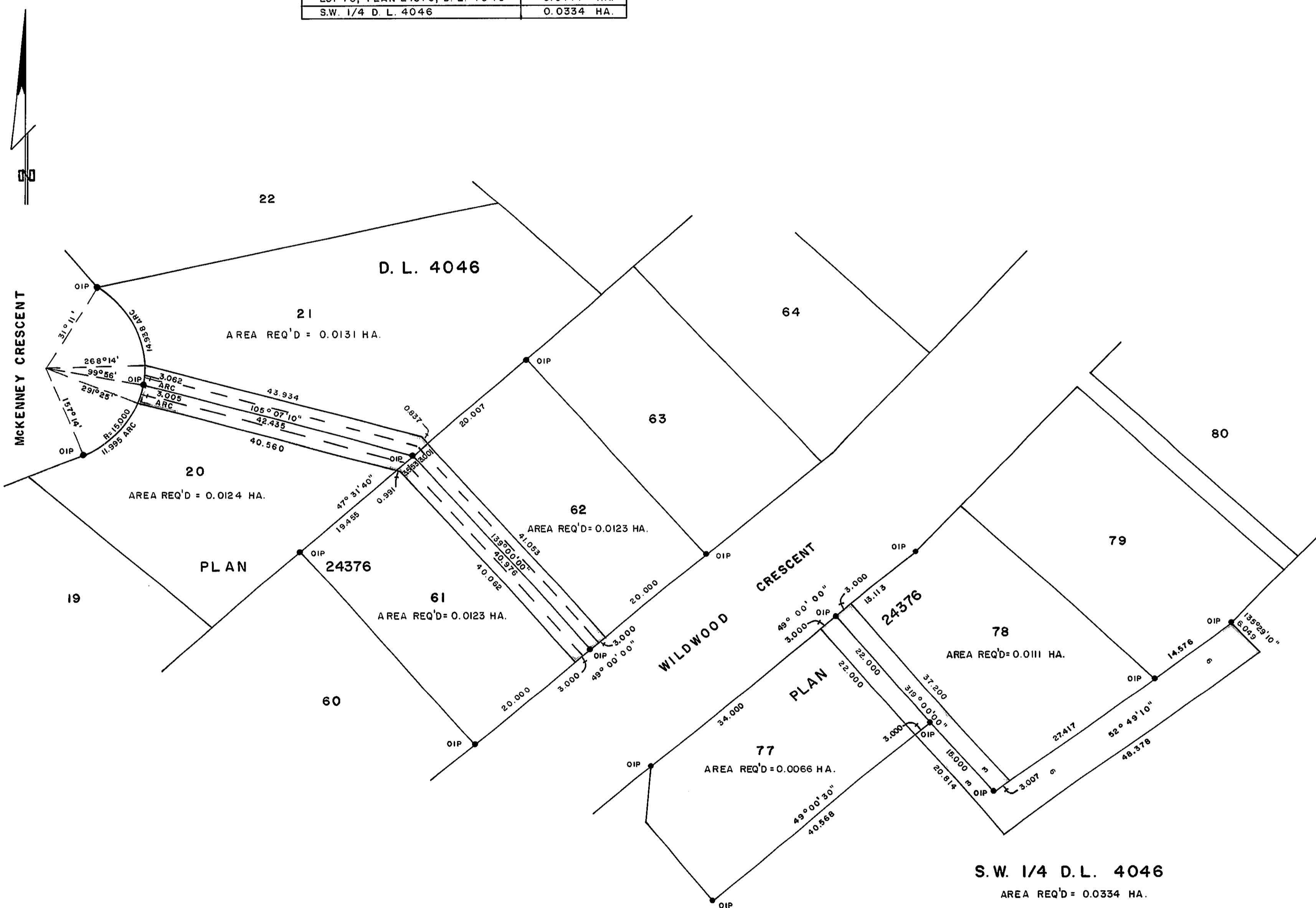
PLAN No 24823

Deposited in the Land Registry
Office at Prince George, B.C. this
11th day of April, 1973

"E.T. SCHOOLEY"
Registrar per: *[Signature]*

BOOK OF REFERENCE

PARCEL	AREA REQ'D
LOT 20, PLAN 24376, D. L. 4046	0.0124 HA.
LOT 21, PLAN 24376, D. L. 4046	0.0131 HA.
LOT 61, PLAN 24376, D. L. 4046	0.0123 HA.
LOT 62, PLAN 24376, D. L. 4046	0.0123 HA.
LOT 77, PLAN 24376, D. L. 4046	0.0066 HA.
LOT 78, PLAN 24376, D. L. 4046	0.0111 HA.
S.W. 1/4 D. L. 4046	0.0334 HA.



I, DONALD A. DUFFY of the City of Prince George,
a British Columbia Land Surveyor, make oath and say
that I was present at and did personally superintend
the survey represented by this plan and that the survey
and plan are correct. The said survey was completed
on the 20 day of Nov., 1972

[Signature]
B.C.L.S.

Sworn before me this 21
day of FEB., 1973

[Signature]
A Commissioner for taking Affidavits
for British Columbia.

This plan lies within the Fraser-Fort George
Regional District.

W. D. USHER & ASSOCIATES
LAND SURVEYORS
PRINCE GEORGE - B.C.