

PLOTTED (HF)

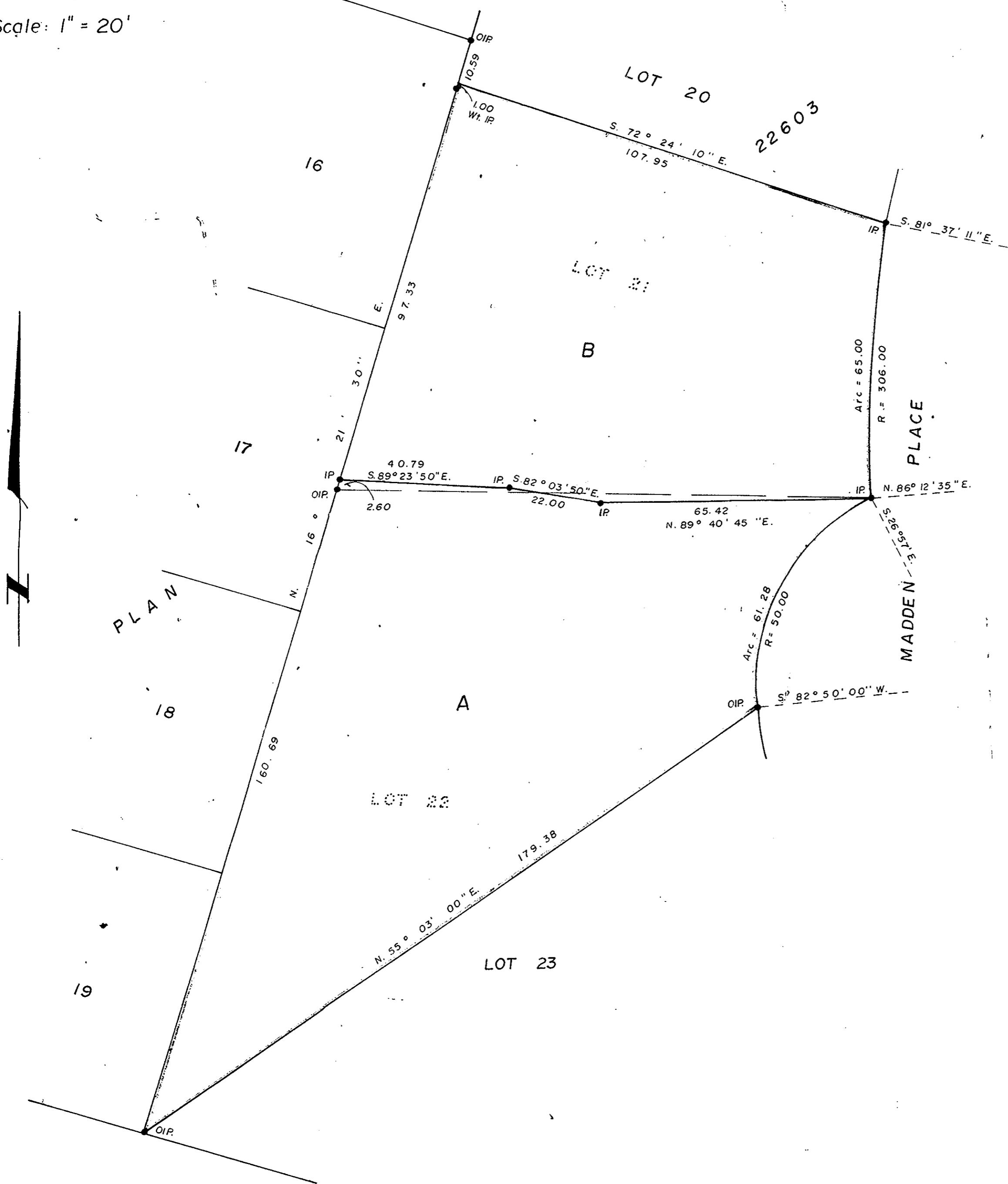
PLAN OF SUBDIVISION OF
LOTS 21 and 22, PLAN 22603,
D.L. 753, CARIBOO DISTRICT.

Scale: 1" = 20'

PLAN No 22603

Deposited in the Land Registry Office at
Prince George on the 10th day of April 1979.

"E.T. SCHOLEY"
Registrar.



Bearings are astronomic and are derived from
Plan 22603.

- P.con. Standard Concrete Post.
- P.Rock Standard Rock Post.
- PP Standard Pipe Post.
- I.P. Standard Iron Post.
- P Wooden Post.
- L.P. Lead Plug.
- Denoting "Old"
- WT. Denoting "Witness"
- CIP Capped Iron Post

I, D. Keown, of the City of Prince George,
British Columbia Land Surveyor, make oath and
say that I was present at and did personally
superintend the survey represented by this
plan and that the survey and plan are correct.
The said survey was completed on
the 10th day of May, 1978.

D. Keown

Sworn before me at Prince George, B.C.,
this 15th day of February, 1979.

[Signature]
A commissioner for taking affidavits
for British Columbia.

Approved under the Land Registry Act
on the 21 day of MAR 1979

C. E. Olot
Approving Officer
City Engineer
City of Prince George.

Owners *Dennis Hugo Bergstrom*
Dennis Hugo Bergstrom

Carole Diane Bergstrom
Carole Diane Bergstrom

This plan lies within the Fraser
Regional District.

Witness *Conradie Hughes*
to both signatures.

Wayne Watson Development Corporation
(Incorporation # 83662)

[Signature]

McWilliam—Whyte—Goble & Associates
B.C. LAND SURVEYORS
PRINCE GEORGE | SMITHERS | KAMLOOPS

REF N: 78048