

EA  
DA.

PLOTTED (EA)

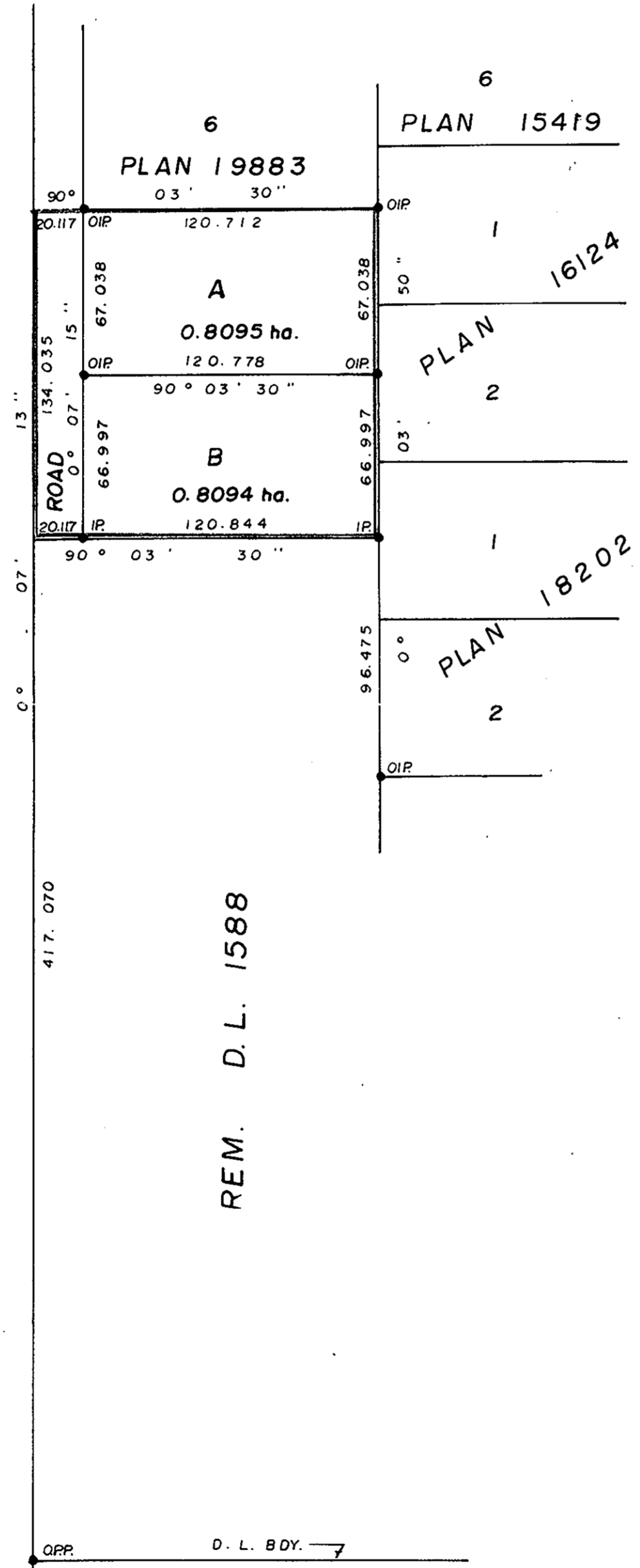
~~NUMERIC MAP~~  
~~DATE FOR EA~~

PLAN NO. 24769  
DEPOSITED IN THE LAND REGISTRY OFFICE AT  
PRINCE GEORGE THIS 20 DAY OF MARCH 1979.

"E.T. SCHOOLEY"  
REGISTRAR



D. L. 624



PLAN OF SUBDIVISION  
OF PART OF DISTRICT LOT 1588,  
CARIBOO DISTRICT.  
SCALE: 1:2000

ALL DISTANCES ARE IN METRES.

BEARINGS ARE ASTRONOMIC DERIVED FROM  
SOUTH BDY. LOT 6, PLAN 19883.

- I.P. .... STANDARD IRON POST.
- P.P. .... STANDARD PIPE POST.
- ..... DENOTES "OLD"

I, DALE KEOWN, OF THE CITY OF PRINCE GEORGE,  
BRITISH COLUMBIA LAND SURVEYOR MAKE OATH  
AND SAY THAT I WAS PRESENT AT AND DID  
PERSONALLY SUPERINTEND THE SURVEY REPRESENTED  
BY THIS PLAN AND THAT THE SURVEY AND PLAN  
ARE CORRECT. THE SAID SURVEY WAS COMPLETED  
ON THE 31<sup>st</sup> DAY OF MARCH 1979.

*Dale Keown*  
DALE KEOWN, B.C.L.S.

APPROVED UNDER THE LAND REGISTRY ACT  
THIS 20 DAY OF MARCH 1979.

*P.E. Orest*  
APPROVING OFFICER  
CITY ENGINEER  
CITY OF PRINCE GEORGE, B.C.

SWORN BEFORE ME AT PRINCE GEORGE, B.C.,  
THIS 20 DAY OF MARCH 1979.

*[Signature]*  
A COMMISSIONER FOR TAKING AFFIDAVITS  
FOR BRITISH COLUMBIA.

OWNERS *Borge Otto Jensen*  
BORGE OTTO JENSEN

*Thora Kristine Jensen*  
THORA KRISTINE JENSEN

*Dale Keown*  
WITNESS TO BOTH SIGNATURES.

THIS PLAN LIES WITHIN THE FRASER  
FORT GEORGE REGIONAL DISTRICT.

McWILLIAM, WHYTE, GOBLE, & ASSOCIATES,  
B.C. LAND SURVEYORS,  
PRINCE GEORGE - KAMLOOPS - SMITHERS.

REF. NO. 76015

D. L. 1588