

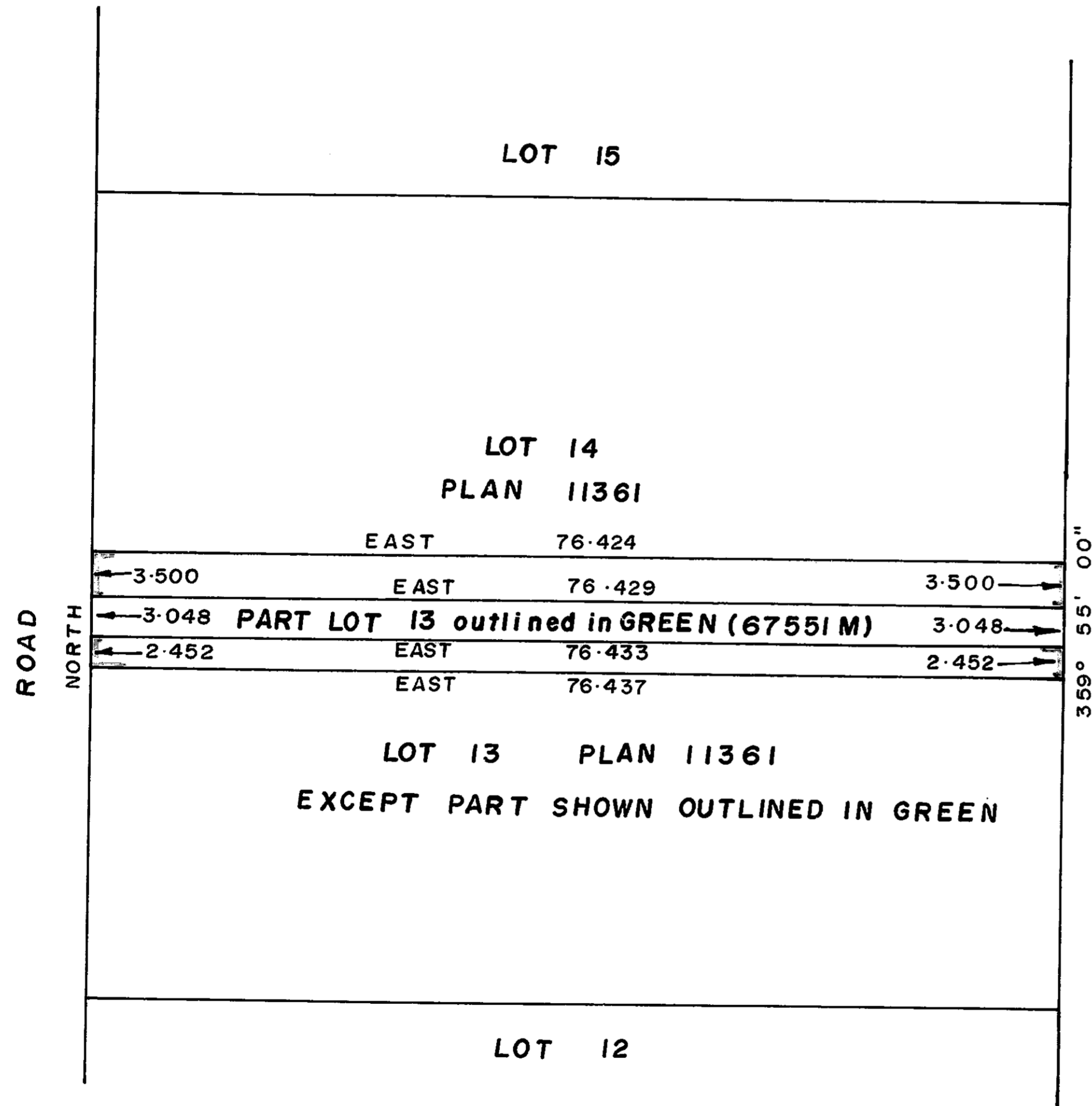
26

24761

PLAN NO 24761

DEPOSITED IN THE LAND REGISTRY OFFICE  
AT PRINCE GEORGE THIS 20<sup>th</sup> DAY OF  
March 1979.

"E.T. SCHOOLEY" per: *[Signature]*  
REGISTRAR



D. L. 905

CITY OF PRINCE GEORGE

PLAN OF RIGHT-OF-WAY WITHIN  
LOT 14 & LOT 13 EXCEPT THAT  
PART SHOWN OUTLINED IN GREEN  
PLAN 11361 D.L. 9261  
CARIBOO DISTRICT.  
SCALE: 1:500 DISTANCES ARE IN METRES.

CERTIFIED CORRECT  
ACCORDING TO LAND REGISTRY OFFICE RECORDS  
THIS 12<sup>th</sup> DAY OF March 1979.

*[Signature]*  
DALE KEOWN B.C.L.S.

PREPARED PURSUANT TO SECTION 118 OF THE LAND REGISTRY ACT

BOOK OF REFERENCE	AREA
LOT 13, EXCEPT PART OUTLINED IN GREEN PLAN 11361	0.0187 ha.
LOT 14 PLAN 11361	0.0267 ha.

Mc WILLIAM - WHYTE - GOBLE & ASSOCIATES  
B. C. LAND SURVEYORS  
PRINCE GEORGE - KAMLOOPS - SMITHERS

REF. NO. 79007-2

THIS PLAN LIES WITHIN THE FRASER FORT GEORGE  
REGIONAL DISTRICT.

D.L. 9261