

EXPLANATORY PLAN OF
 CONSOLIDATION OF LOTS 1 TO 8 INCLUSIVE, PLAN 9294
 DISTRICT LOT 4046 &
 S.E. 1/4 DISTRICT LOT 4046 EXCEPT PLAN 9294
 CARIBOO DISTRICT - BRITISH COLUMBIA

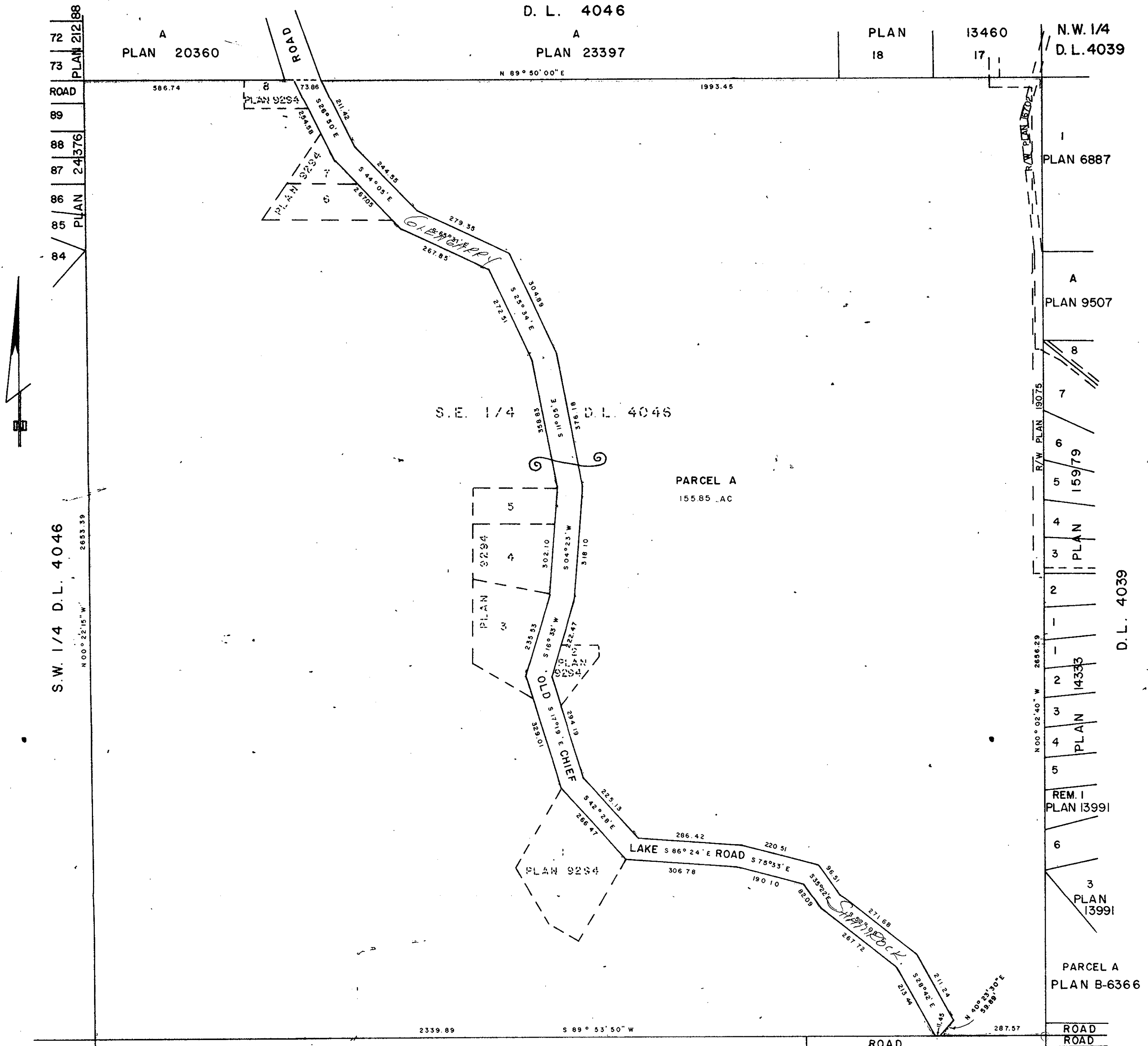
SCALE: 1" = 200'

NOTE: Bearings are astronomic, derived from the south
 boundary of N.E. 1/4 D.L. 4046 as shown on Plan 13460.

PLOTTED
 (GR) (HR)
 (GS)

PLAN No. 24734
 Deposited in the Land Registry
 Office at Prince George, B.C. this
 25th day of March, 1979

"E.J. SCHROEDER"
 Registrar



N.W. 1/4
 D.L. 4045

CERTIFIED CORRECT
 According to information shown on
 plans of record in the Prince George
 Land Registry Office.
 This 12th day of Feb., 1979.
 D.A. DUFFY, B.C.L.S.

N.E. 1/4 D.L. 4045

PLAN 17175 PLAN 21129
 ROAD ROAD ROAD ROAD

This plan lies within the Fraser-Fort George
 Regional District.

W.D. USHER & ASSOCIATES
 LAND SURVEYORS
 PRINCE GEORGE - B.C.
 3465