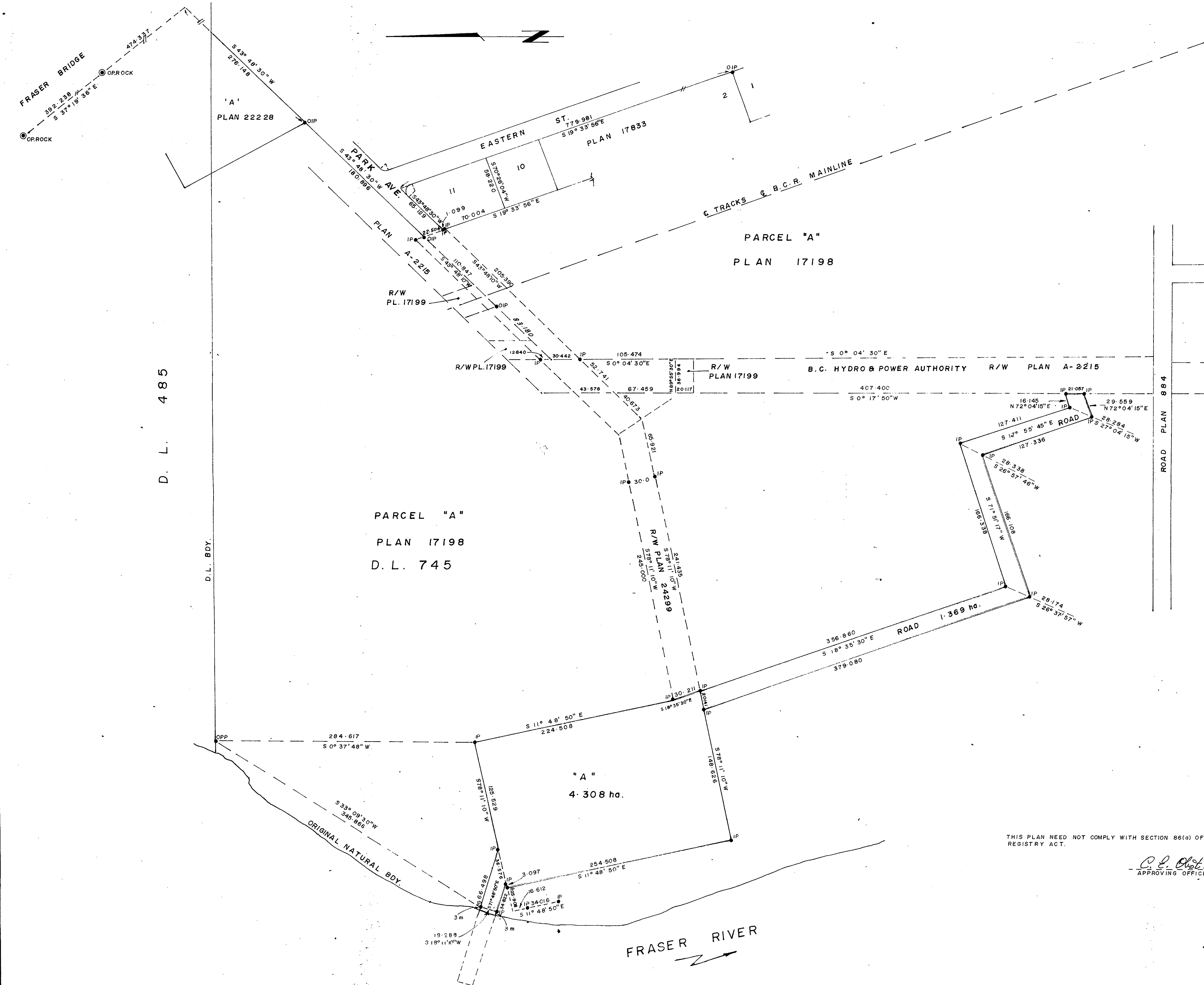


PLAN NO. 24515
DEPOSITED IN THE LAND REGISTRY OFFICE
AT PRINCE GEORGE, B.C. ON THE 12
DAY OF DEC 1978

E.T. Schooley
REGISTRAR



PLAN OF SUBDIVISION OF
PART OF PARCEL "A" PLAN 17198
OF PLAN 884, D.L. 745
CARIBOO DISTRICT
SCALE: 1:2000 1cm. = 20 m.
DISTANCES IN METRES & DECIMALS THEREOF

BEARINGS ARE ASTRONOMIC DERIVED FROM PLAN 17199
● P. ROCK _____ STANDARD ROCK POST
● PP _____ STANDARD PIPE POST
● IP _____ STANDARD IRON POST
○ _____ DENOTING "OLD"

I, V. BARTELL OF THE CITY OF PRINCE GEORGE, BRITISH COLUMBIA
LAND SURVEYOR, MAKE OATH AND SAY THAT I WAS PRESENT AT
AND DID PERSONALLY SUPERINTEND THE SURVEY REPRESENTED BY
THIS PLAN AND THAT THE SURVEY AND PLAN ARE CORRECT. THE
SAID SURVEY WAS COMPLETED ON THE 21 DAY OF August 1978.

V. Bartell
V. BARTELL B.C.L.S.

SWORN BEFORE ME AT PRINCE GEORGE B.C. ON THE 21 DAY OF
August 1978.

A Commissioner for Taking Affidavits
FOR BRITISH COLUMBIA

APPROVED UNDER THE LAND REGISTRY ACT ON THE 31st DAY OF
AUG 1978
Reapproved Dec 11 1978
D.G. Olat
APPROVING OFFICER

BRITISH COLUMBIA RAILWAY COMPANY
VICE-PRESIDENT
DIRECTOR

THIS PLAN NEED NOT COMPLY WITH SECTION 86(a) OF THE LAND
REGISTRY ACT.

C.E. Olat
APPROVING OFFICER

THIS PLAN LIES WITHIN THE FRASER FORT GEORGE REGIONAL DISTRICT