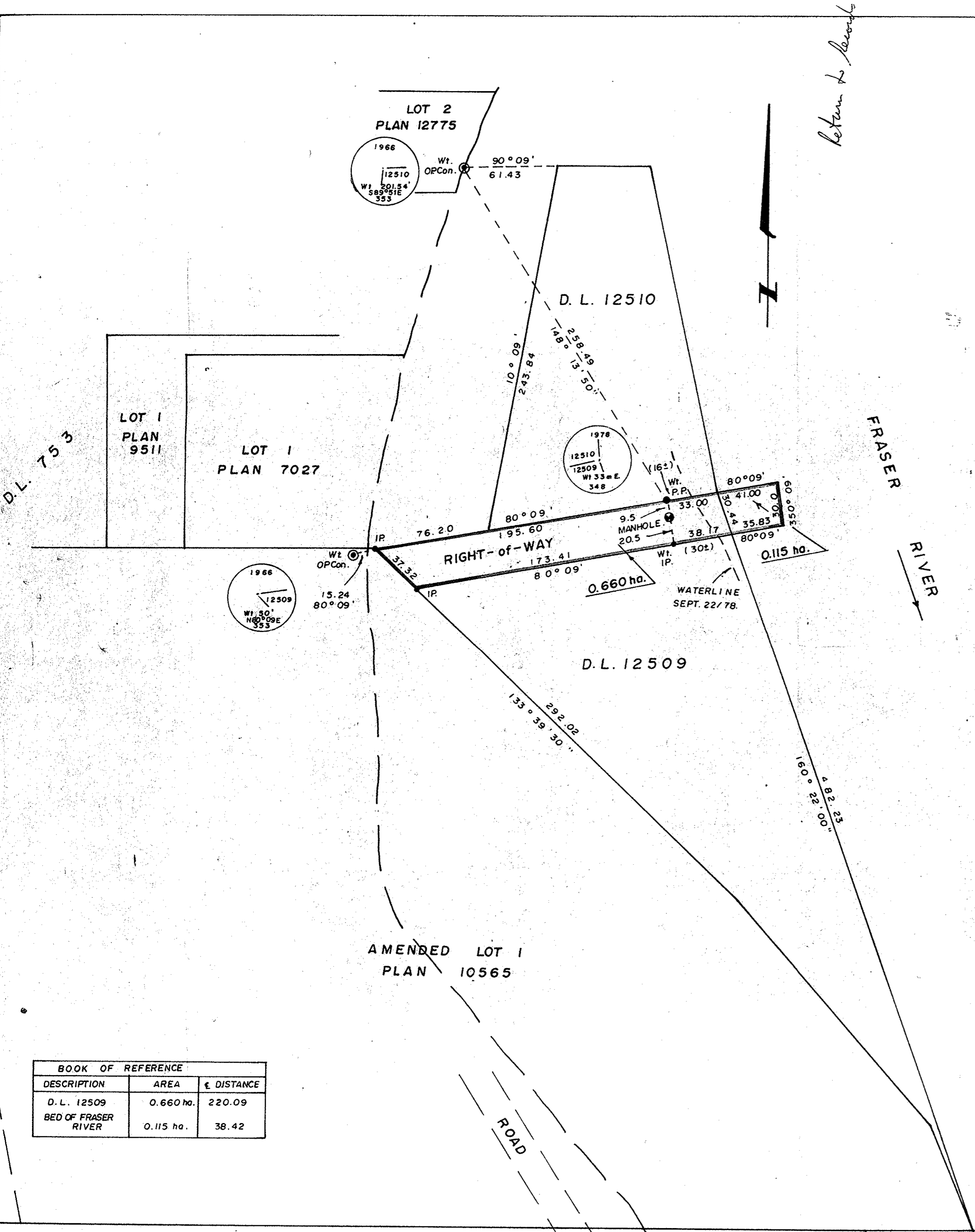


Plotted H.G

PLAN NO. **24514**
DEPOSITED IN THE LAND REGISTRY OFFICE
AT PRINCE GEORGE THIS 22 DAY OF DEC. 1978.

E.T. Schooley
REGISTRAR



PLAN OF RIGHT-of-WAY
IN D.L. 12509 and the
BED OF FRASER RIVER
CARIBOO DISTRICT.
Scale: 1:2000

All distances are in metres and decimals thereof.

I hereby certify that this is a true copy of the Official Plan on deposit with the Surveyor General, Ministry of the Environment, and numbered 20 tube 745.

R. D. Hoopes
Surveyor General, Victoria, B.C.
November 29, 1978

I, V. BARTELL, OF THE CITY OF PRINCE GEORGE, BRITISH COLUMBIA LAND SURVEYOR MAKE OATH AND SAY THAT I WAS PRESENT AT AND DID PERSONALLY SUPERINTEND THE SURVEY REPRESENTED BY THIS PLAN AND THAT THE SURVEY AND PLAN ARE CORRECT. THE SAID SURVEY WAS COMPLETED ON THE 25 DAY OF September 1978.

V. Bartell
V. BARTELL, B.C.L.S.

SWORN BEFORE ME AT PRINCE GEORGE, B.C., THIS 22 DAY OF September 1978.

[Signature]
A COMMISSIONER FOR TAKING AFFIDAVITS FOR BRITISH COLUMBIA.

BOOK OF REFERENCE		
DESCRIPTION	AREA	± DISTANCE
D. L. 12509	0.660 ha.	220.09
BED OF FRASER RIVER	0.115 ha.	38.42

BEARINGS ARE ASTRONOMIC DERIVED FROM OFFICAL PLAN OF D.L. 12509 AND D.L. 12510

- P.C on ... STANDARD POST IN CONCRETE.
- PP ... STANDARD PIPE POST
- IP ... STANDARD IRON POST.
- ... DENOTES "OLD"
- Wt. ... DENOTES "WITNESS"

THIS PLAN LIES WITHIN THE FRASER FORT GEORGE REGIONAL DISTRICT.

McWILLIAM, WHITE, GOBLE, & ASSOCIATES,
B.C. LAND SURVEYORS,
PRINCE GEORGE - KAMLOOPS - SMITHERS.

REF. NO. 77100-49