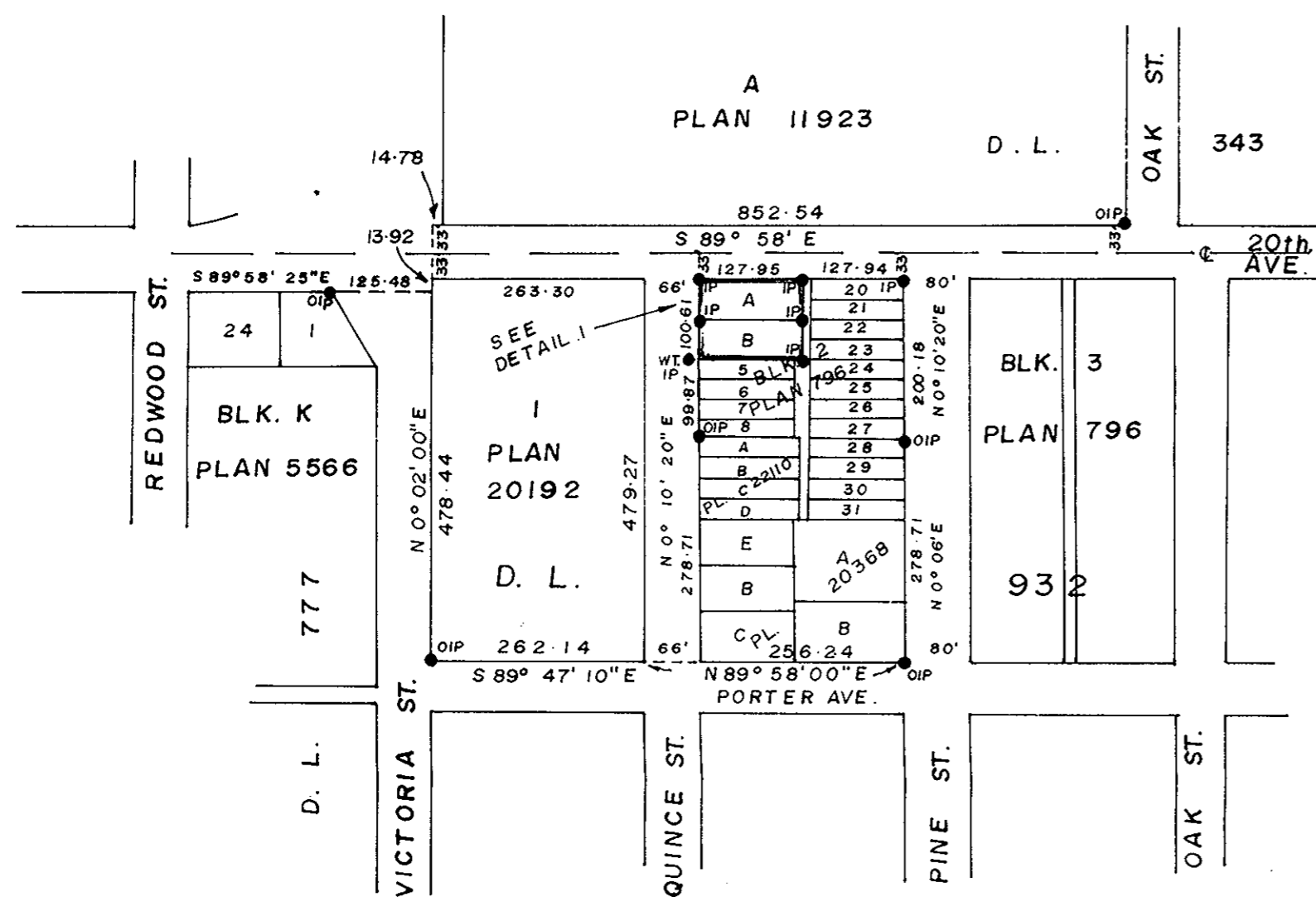


PLOTTED JK.

PLAN NO. 24490

DEPOSITED IN THE LAND REGISTRY OFFICE
AT PRINCE GEORGE ON THE 30 DAY OF Nov 1978.

E.T. SHOOLEY
REGISTRAR



PLAN OF SUBDIVISION OF
LOTS 1 TO 4 INCLUSIVE, OF BLOCK 2, PLAN 796
AND PART OF W. 1/2 OF CLOSED LANE
BYLAW PLAN 19997 D.L. 932
CARIBOO DISTRICT.

SCALE: 1" = 200'

BEARINGS ARE DERIVED FROM \odot 20th. AVE. SHOWN AS S 89° 58' E ON PLAN 11923

● IP _____ STANDARD IRON POST
○ _____ DENOTING "OLD"
WT. _____ DENOTING "WITNESS"

I, V. BARTELL OF THE CITY OF PRINCE GEORGE BRITISH COLUMBIA LAND SURVEYOR
MAKE OATH AND SAY THAT I WAS PRESENT AT AND DID PERSONALLY SUPERINTEND
THE SURVEY REPRESENTED BY THIS PLAN AND THAT THE SURVEY AND PLAN
ARE CORRECT. THE SAID SURVEY WAS COMPLETED ON THE 16 DAY OF November
1978.

Victor Bartell
V. BARTELL B.C.L.S.

SWORN BEFORE ME AT PRINCE GEORGE THIS 16 DAY OF November 1978.

[Signature]
A COMMISSIONER FOR TAKING AFFIDAVITS
FOR BRITISH COLUMBIA.

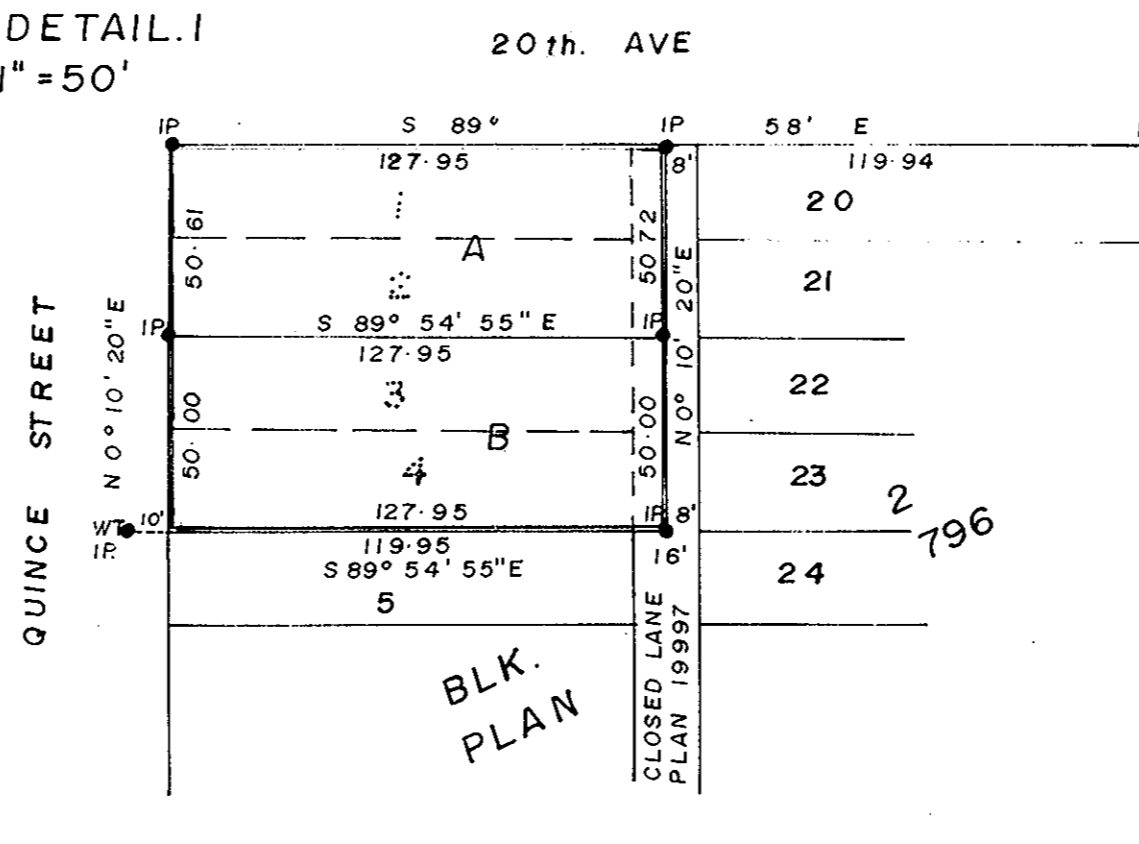
APPROVED UNDER THE LAND REGISTRY ACT ON THE 29 DAY OF NOV. 1978

C. E. Plot
APPROVING OFFICER
CITY OF PRINCE GEORGE

OWNER _____

WITNESS _____

DETAIL. I
1" = 50'



THIS PLAN LIES WITHIN THE FRASER FORT GEORGE REGIONAL DISTRICT

McWILLIAM - WHYTE - GOBLE & ASSOCIATES
B.C. LAND SURVEYORS
PRINCE GEORGE - KAMLOOPS - SMITHERS
REF. NO. 78173

D.L. 932