

22-FF

24471

D. L. 482

D. L. 1530

PLAN NO **24471**
DEPOSITED IN THE LAND REGISTRY OFFICE
AT PRINCE GEORGE ON THE 21 DAY OF
Nov. 1978.

E. T. Schooley
REGISTRAR

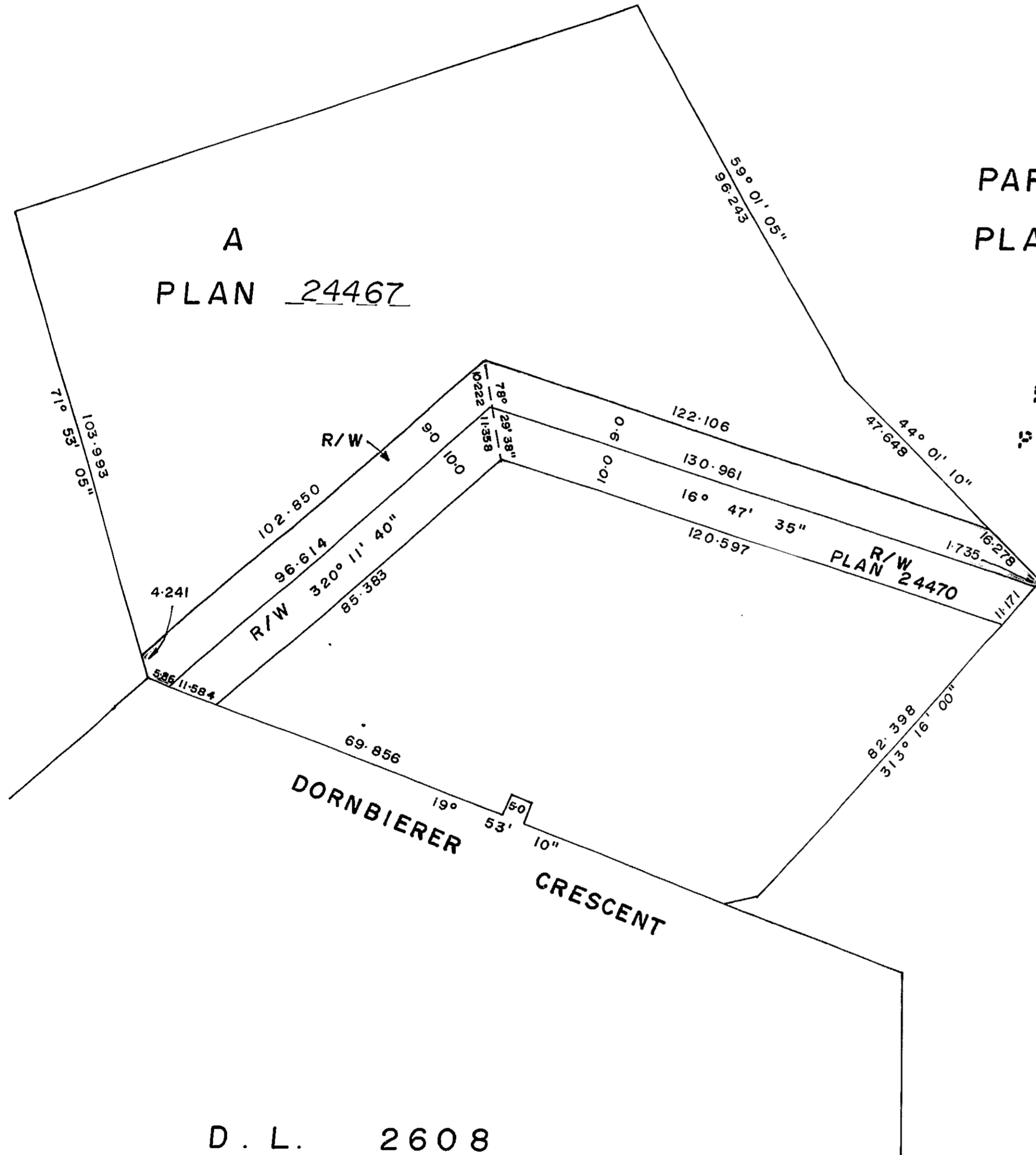
EXPLANATORY PLAN OF
RIGHT OF WAY IN
LOT A, PLAN 24467
D. L. 2608
CARIBOO DISTRICT
SCALE: 1:1000 1cm. = 10m.
DISTANCES IN METRES AND DECIMALS THEREOF

BEARINGS ARE ASTRONOMIC DERIVED FROM PLAN 22362

PARCEL A
PLAN 24469

LOT 217
PLAN 22362

ROAD
PL. 813



BOOK OF REFERENCE	
DESCRIPTION	AREA
LOT A, PL. 24467	0.206 ha.

CERTIFIED CORRECT ACCORDING TO
LAND REGISTRY OFFICE RECORDS
THIS 21 DAY OF August 1978

V. Bartell
V. BARTELL B. C. L. S.

D. L. 2608



THIS PLAN LIES WITHIN THE FRASER FORT GEORGE REGIONAL DISTRICT

McWILLIAM - WHYTE - GOBLE & ASSOCIATES
B. C. LAND SURVEYORS
PRINCE GEORGE - KAM LOOPS - SMITHERS
REF. NO. 78079

D. L. 2608