

26-FF

PLAN NO. 24470  
DEPOSITED IN THE LAND REGISTRY OFFICE  
AT PRINCE GEORGE ON THE 21 DAY OF  
Nov. 1978.

E.T. Schooley  
REGISTRAR

D.L. 482

D.L. 1530

PLAN OF RIGHT OF WAY  
IN LOT A, PLAN 24467  
D.L. 2608  
CARIBOO DISTRICT

SCALE: 1:1000 1cm. = 10m.  
DISTANCES IN METRES AND DECIMALS  
THEREOF  
BEARINGS ARE ASTRONOMIC DERIVED FROM PLAN  
22362

LEGEND:  
● IP ----- STANDARD IRON POST  
O ----- DENOTING "OLD"

PARCEL A

PLAN 24469

LOT 217  
PLAN 22362

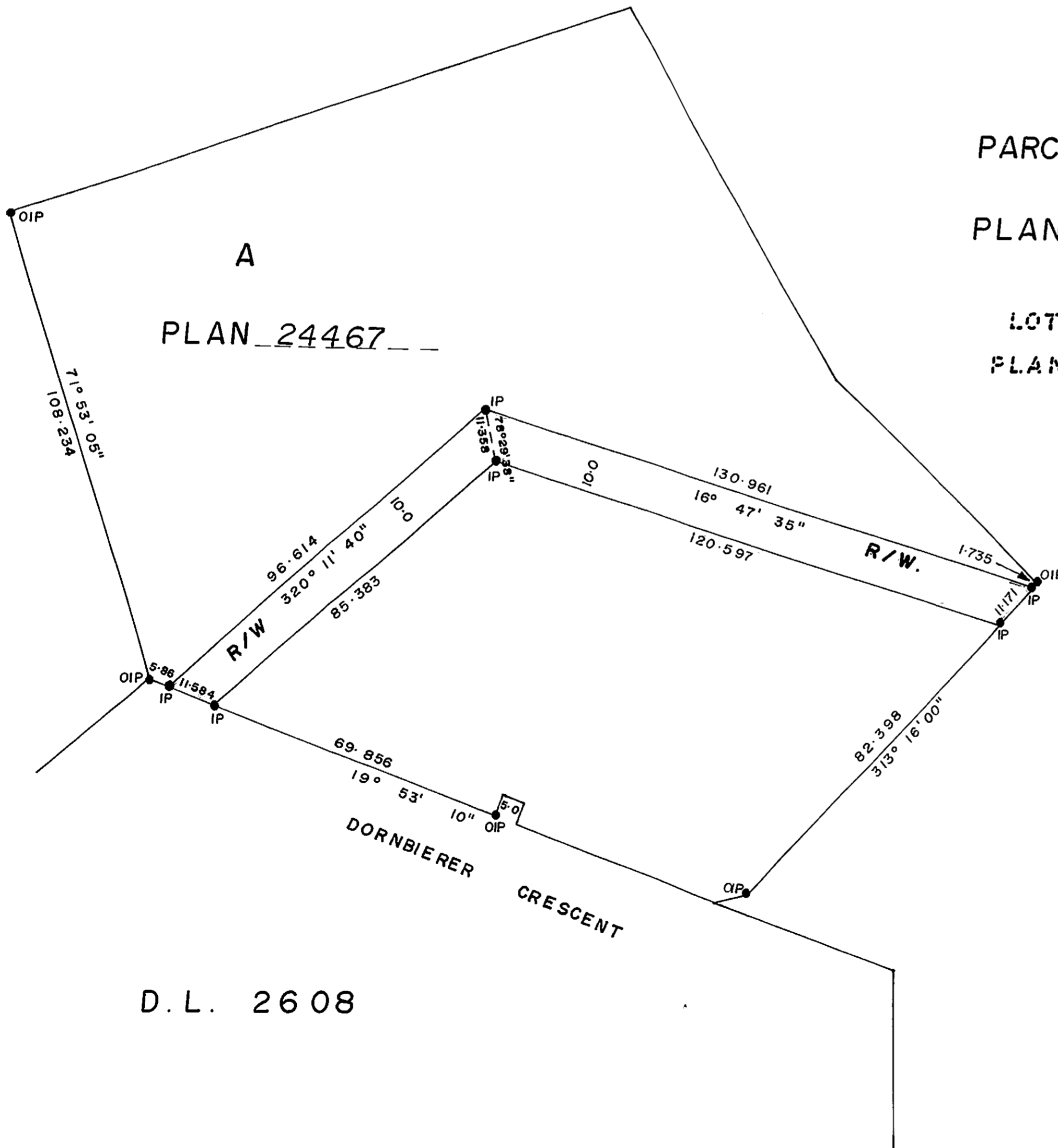
ROAD  
PL. 813

I, V. BARTELL OF THE CITY OF PRINCE GEORGE BRITISH COLUMBIA  
LAND SURVEYOR, MAKE OATH AND SAY THAT I WAS PRESENT AT AND  
DID PERSONALLY SUPERINTEND THE SURVEY REPRESENTED BY THIS  
PLAN AND THAT THE SURVEY AND PLAN ARE CORRECT.  
THE SAID SURVEY WAS COMPLETED ON THE 21 DAY OF August 1978

V. Bartell  
V. BARTELL B.C.L.S.

SWORN BEFORE ME AT PRINCE GEORGE THIS 21 DAY OF August 1978

A Commissioner for Taking Affidavits  
FOR BRITISH COLUMBIA



BOOK OF REFERENCE	
DESCRIPTION	AREA
LOT A, PL. 2446Z	0.217 ha.

D.L. 2608

THIS PLAN LIES WITHIN THE FRASER FORTGEORGE REGIONAL  
DISTRICT

McWILLIAM-WHYTE-GOBLE & ASSOCIATES  
B.C. LAND SURVEYORS  
PRINCE GEORGE-KAMLOOPS-SMITHERS  
REF. NO. 78079