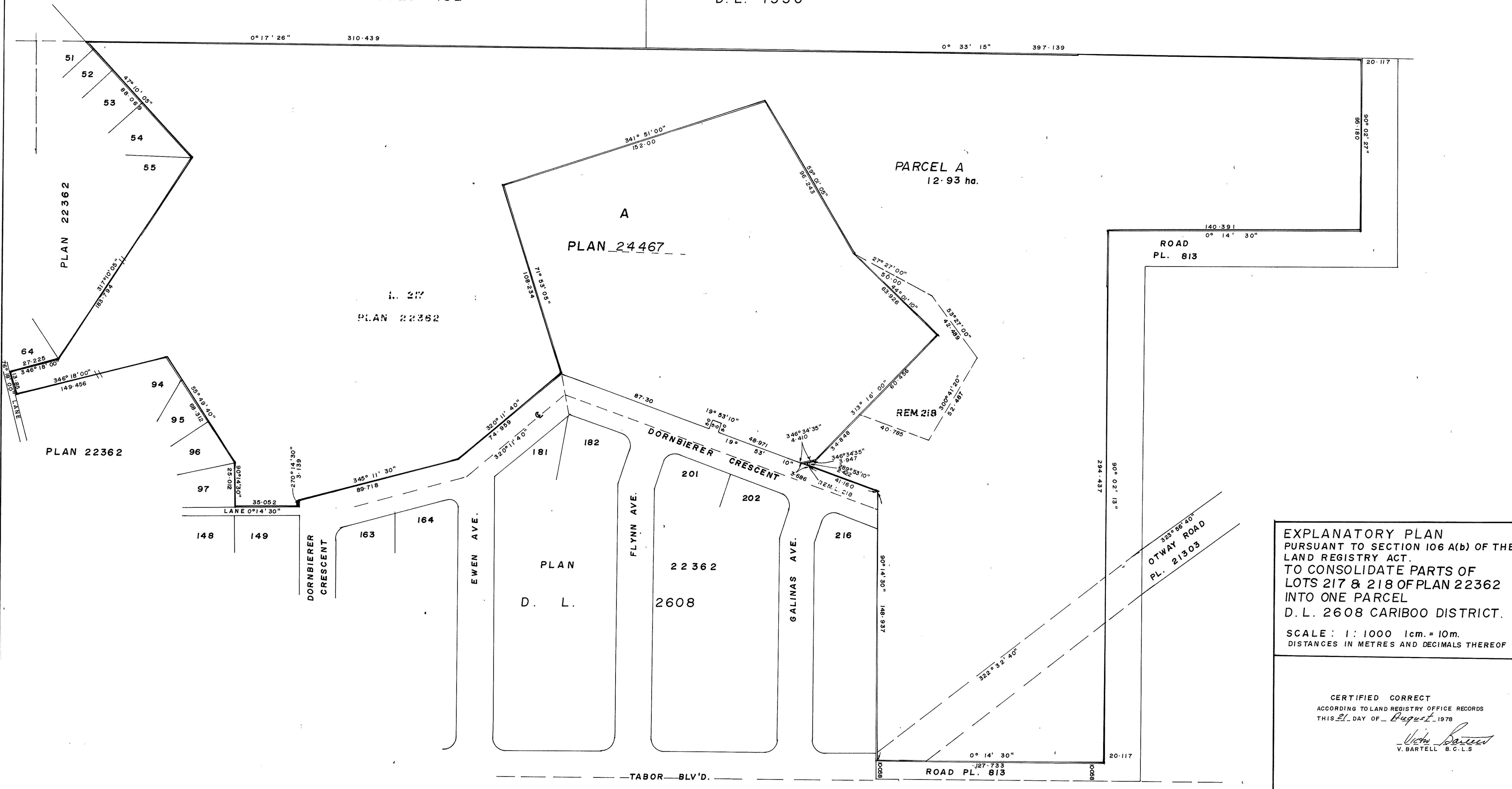


E.T. Schooley
 REGISTRAR

D. L. 482

D. L. 1530



EXPLANATORY PLAN
 PURSUANT TO SECTION 106 A(b) OF THE
 LAND REGISTRY ACT.
 TO CONSOLIDATE PARTS OF
 LOTS 217 & 218 OF PLAN 22362
 INTO ONE PARCEL
 D. L. 2608 CARIBOO DISTRICT.
 SCALE: 1:1000 1cm. = 10m.
 DISTANCES IN METRES AND DECIMALS THEREOF

CERTIFIED CORRECT
 ACCORDING TO LAND REGISTRY OFFICE RECORDS
 THIS 21 DAY OF August 1978
V. Bartell
 V. BARTELL B.C.L.S.

SEAL OF THE CITY OF PRINCE GEORGE WAS
 AFFIXED HERETO IN THE PRESENCE OF:
 MAYOR *Hammy*
 CITY CLERK *A.W. Buchanan*

THIS PLAN LIES WITHIN THE FRASER FORT GEORGE REGIONAL
 DISTRICT.

McWILLIAM-WHYTE-GOBLE ASSOCIATES
 B.C. LAND SURVEYORS
 PRINCE GEORGE - KAMLOOPS - SMITHERS
 REF. NO. 78079

D. L. 1427