

PLAN No 24451
Deposited in the Land Registry
Office at Prince George, B.C. this
16 day of Nov. 1978

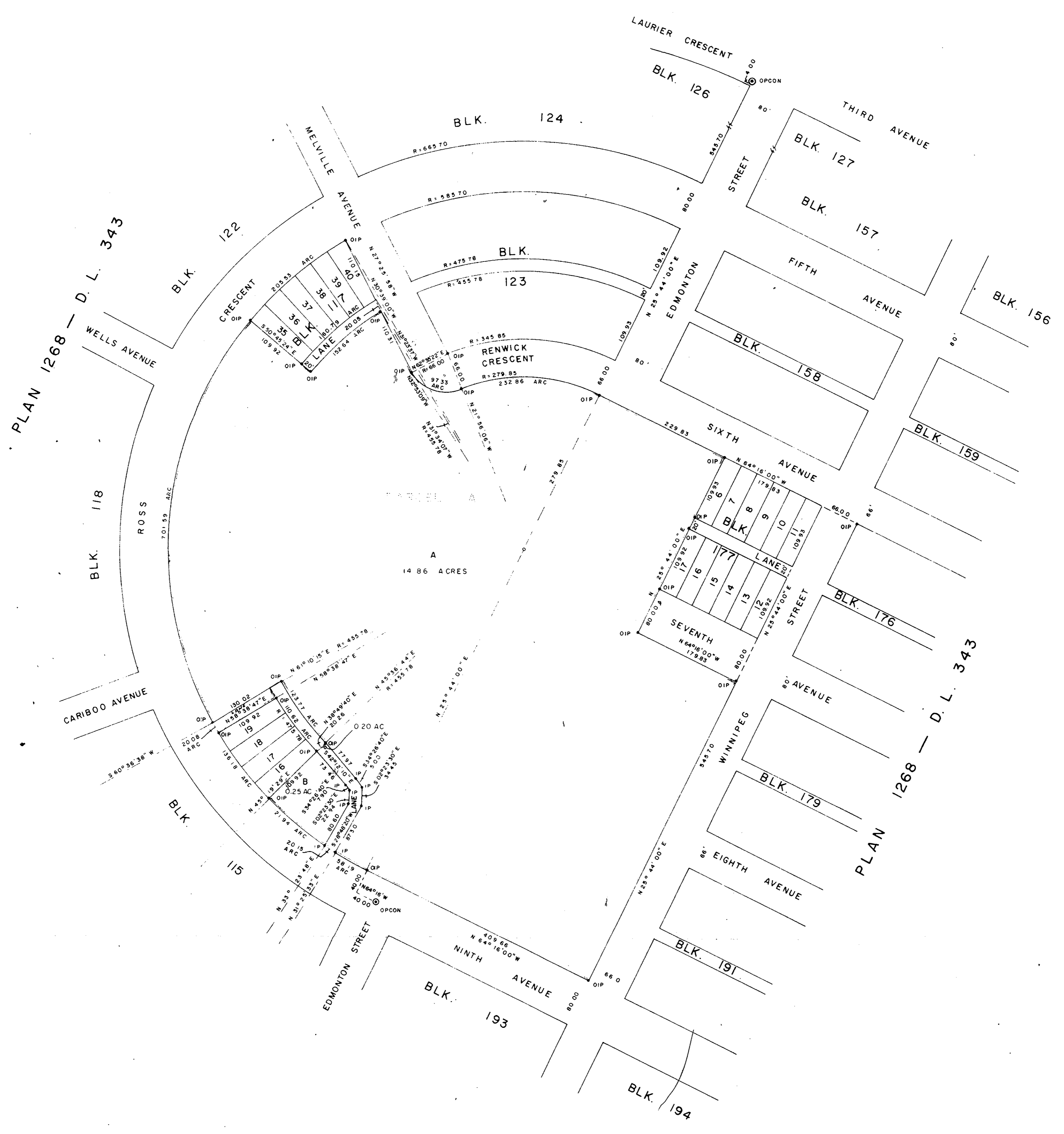
Registrar *E.I. Schaeley*

PLAN OF SUBDIVISION OF
PARCEL A (PLAN 23497), PLAN 1268
DISTRICT LOT 343
CARIBOO DISTRICT - BRITISH COLUMBIA

SCALE: 1" = 100'

NOTE: Bearings are astronomic, derived from the west
boundary of Edmonton Street, Plan 1268.

LEGEND: ● OPCON denotes an old concrete monument found.
• OIP denotes an old iron pin found.
• IP denotes an iron pin set.



I, DONALD A. DUFFY of the City of Prince George,
a British Columbia Land Surveyor, make oath and say
that I was present at and did personally superintend
the survey represented by this plan and that the survey
and plan are correct. The said survey was completed
on the 20th day of August, 1978.

B.C.L.S.

Sworn before me this 22nd
day of November, 1978.

A Commissioner for taking Affidavits
for British Columbia.

BOARD OF SCHOOL TRUSTEES
OF SCHOOL DISTRICT No 57

J. J. Carpenter
J. J. Carpenter

CANADA PERMANENT TRUST COMPANY

[Signature] AUTHORIZED OFFICER
A. Wainwright AUTHORIZED OFFICER

Approved under the Land Registry Act
this 13th day of Nov. 1978.

C. E. Ouellet
Approving Officer, City of Prince George
Reapproved Nov. 14, 1978

This plan lies within the Fraser-Fort George
Regional District.