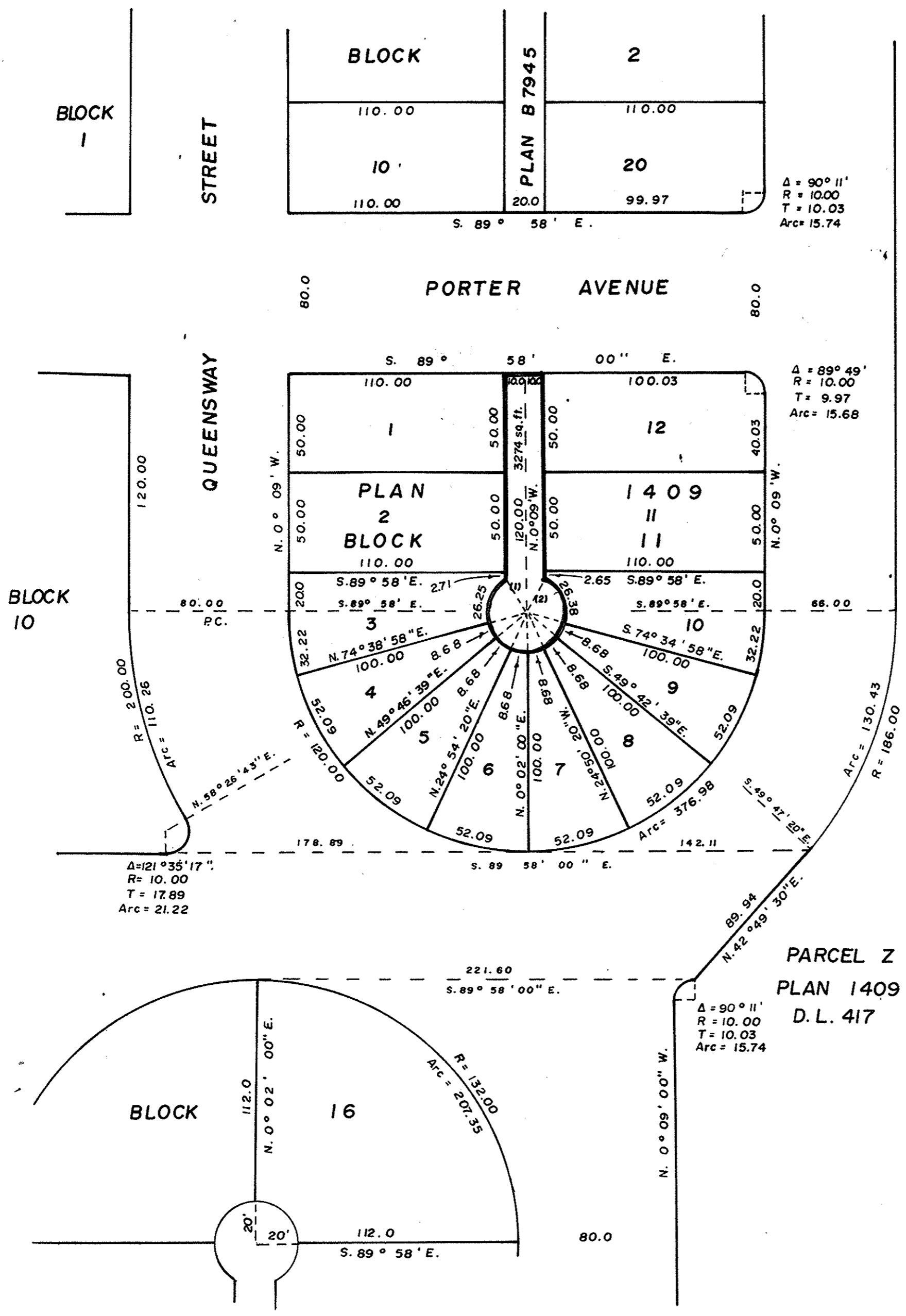


PLAN TO ACCOMPANY BY LAW NO. 3250,  
CITY OF PRINCE GEORGE, B.C.,  
CLOSING LANE ADJOINING LOTS 1 to 12 INCLUSIVE,  
BLOCK II, PLAN 1409, D.L. 417,  
CARIBOO DISTRICT.

PLAN NO. 24429  
DEPOSITED IN THE LAND REGISTRY OFFICE  
AT PRINCE GEORGE THIS 3 DAY OF Nov 1978.

REGISTRAR

Scale : 1" = 50'



AREA OF LANE TO BE CLOSED = 3274 sq. feet.

1	N. 30° 09' 00" W.	R = 20.00
2	N. 29° 51' 00" E.	R = 20.00

CERTIFIED CORRECT  
ACCORDING TO PLAN 1409,  
THIS 25 DAY OF MAY, 1978.  
*V. Bartell*  
V. BARTELL, B.C.L.S.

THIS PLAN LIES WITHIN THE FRASER  
FORT GEORGE REGIONAL DISTRICT.

McWILLIAM, WHYTE, GOBLE & ASSOCIATES,  
B.C. LAND SURVEYORS,  
PRINCE GEORGE - KAMLOOPS - SMITHERS.

REF. NO. 78051