

PLAN NO. 24415
 DEPOSITED IN THE LAND REGISTRY
 OFFICE THIS 27 DAY OF OCT
 1978.

E. J. Schooley
 REGISTRAR

PLAN OF SUBDIVISION OF
 LOT 2, PLAN 14788
 D.L. 1433, CARIBOO DISTRICT

SCALE: 1" = 100'

BEARINGS ARE ASTRONOMIC DERIVED FROM PLAN 23283

●IP ----- STANDARD IRON POST
 O ----- DENOTING "OLD"
 WT. ----- DENOTING "WITNESS"

I, V. BARTELL OF THE CITY OF PRINCE GEORGE BRITISH COLUMBIA
 LAND SURVEYOR, MAKE OATH AND SAY THAT I WAS PRESENT AT AND
 DID PERSONALLY SUPERINTEND THE SURVEY REPRESENTED BY THIS
 PLAN AND THAT THE SURVEY AND PLAN ARE CORRECT. THE
 SAID SURVEY WAS COMPLETED ON THE 2 DAY OF October
 1978.

Victor Bartell
 V. BARTELL B.C.L.S.

SWORN BEFORE ME AT PRINCE GEORGE THIS 12 DAY OF October, 1978

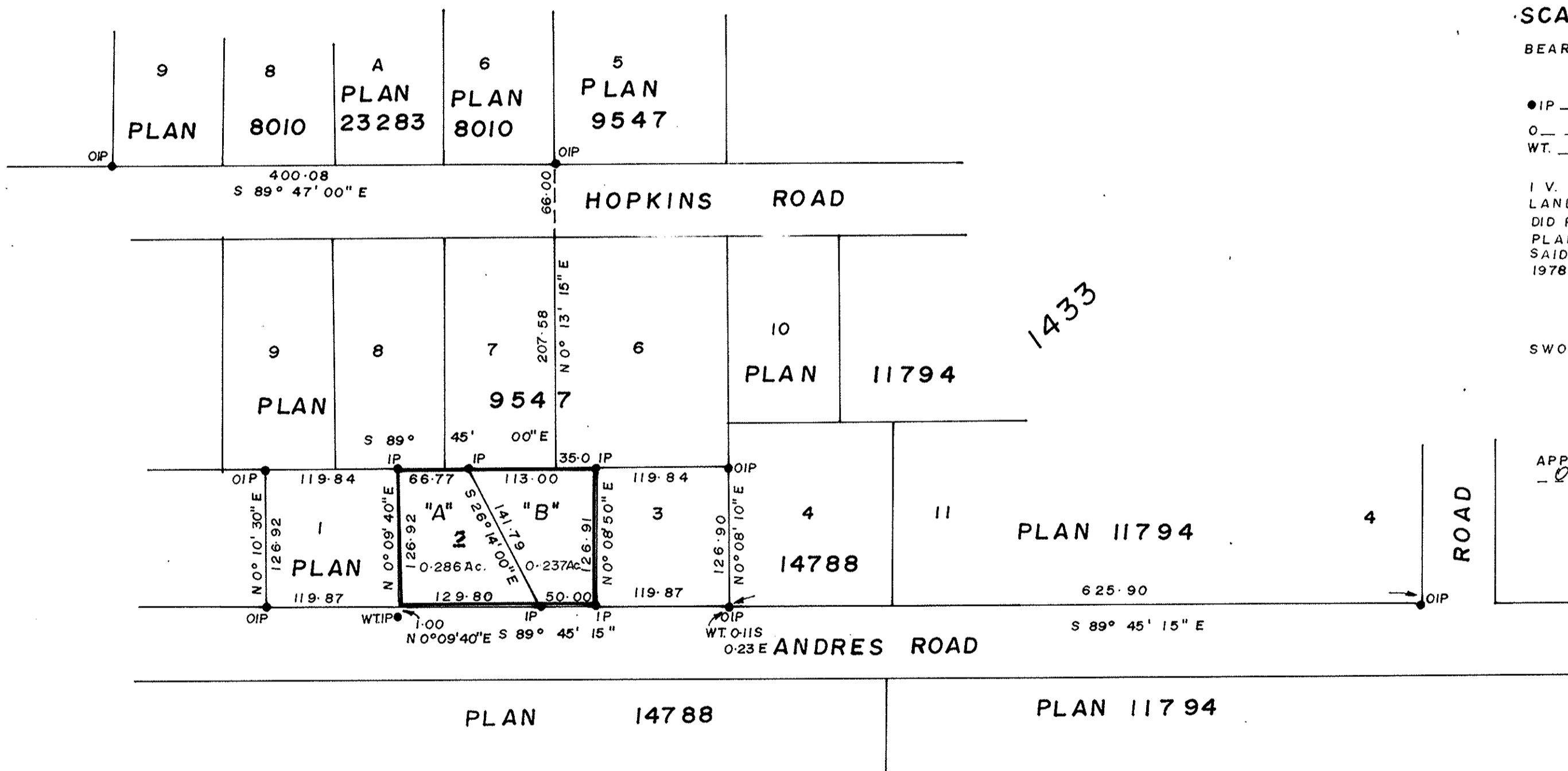
[Signature]
 A COMMISSIONER FOR TAKING
 AFFIDAVITS FOR BRITISH COLUMBIA

APPROVED UNDER THE LAND REGISTRY ACT ON THE 17th DAY OF
OCT, 1978.

C. E. Olot
 APPROVING OFFICER
 CITY OF PRINCE GEORGE

OWNER LOT 2 J.R. Selmer

WITNESS Mary E. Allan



PLAN 14788
 PLAN 11794
 D.L. 1433

THIS PLAN LIES WITHIN THE FRASER FORT GEORGE REGIONAL DISTRICT

McWILLIAM-WHYTE-GOBLE & ASSOCIATES
 B. C. LAND SURVEYORS
 PRINCE GEORGE-KAMLOOPS-SMITHERS
 REF. NO. 78148

D.L. 1433