

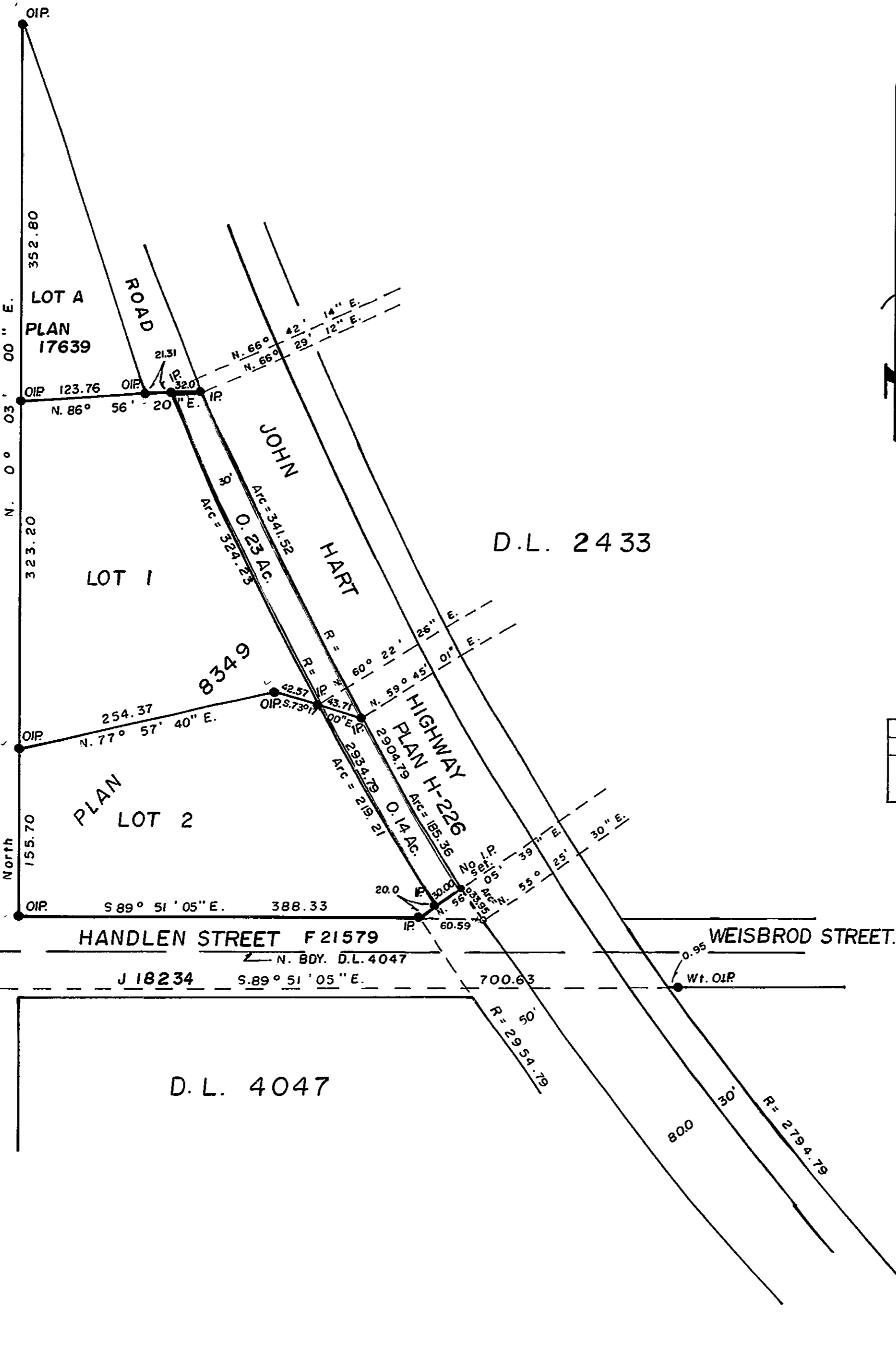
26-FF-226

PLAN NO. **24374**  
 Deposited in the Land Registry Office at  
 Prince George this 5 day of Oct 1978.

*E.T. SCHADLEY*  
 Registrar

D. L. 2424  
 PLAN 8935

S. KELLY ROAD



BOOK OF REFERENCE	
Description	Area Required
Lot 1, Plan 8349	0.23 Ac.
Lot 2, Plan 8349	0.14 Ac.

CITY of PRINCE GEORGE, B.C.

PLAN of RIGHT-of-WAY IN  
 LOTS 1 and 2, PLAN 8349,  
 D.L. 2433, CARIBOO DISTRICT.  
 Scale: 1" = 100'

Bearings are astronomic derived from  
 Plan 22614.

- I.P. .... Standard Iron Post.
- O ..... Denotes "old"
- Wt ..... Denotes "witness"

I, Dale Keown, of the City of Prince George,  
 British Columbia Land Surveyor, make oath  
 and say that I was present at and did personally  
 superintend the survey represented by this plan  
 and that the survey and plan are correct.  
 The said survey was completed on  
 the 5 day of August 1978.

*Dale Keown*  
 D. Keown, B.C.L.S.

Sworn before me at Prince George, B.C.,  
 this 5 day of August 1978.

*[Signature]*  
 A Commissioner for taking affidavits  
 for British Columbia.

This plan lies within the Fraser Fort-  
 George Regional District.

McWilliam, Whyte, Goble, & Associates,  
 B.C. Land Surveyors,  
 Prince George-Kamloops-Smithers.

REF. NO. 78118

D.L. 2433.