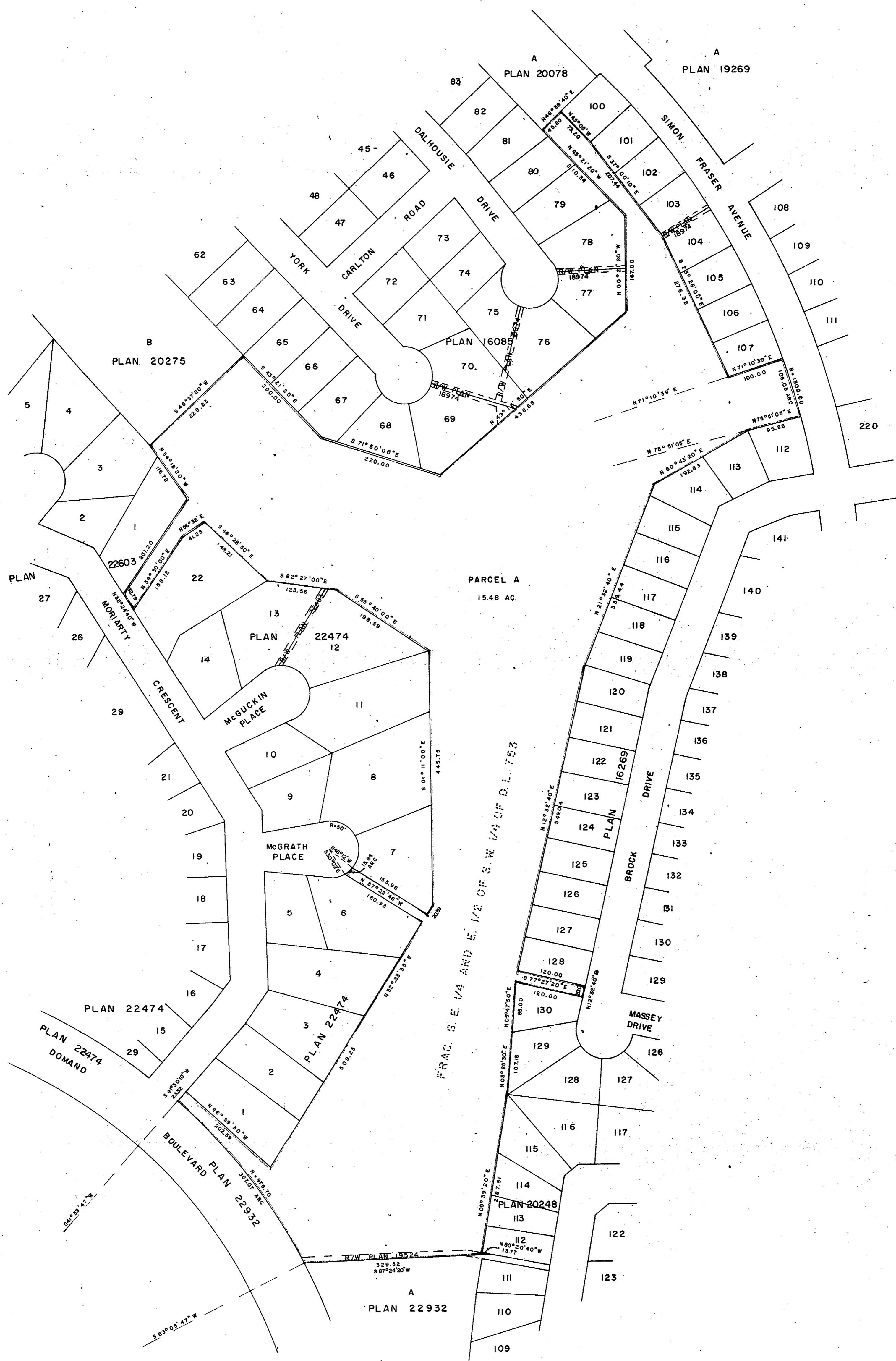


EXPLANATORY PLAN OF PART OF  
 FRACTIONAL S. E. 1/4 & E. 1/2 OF  
 S. W. 1/4 OF DISTRICT LOT 753  
 CARIBOO DISTRICT - BRITISH COLUMBIA  
 SCALE: 1" = 100'

PLAN No. 24369  
 Deposited in the Land Registry  
 Office at Prince George, B.C. this  
4 day of APRIL, 1978.  
 Registrar E. J. Schooley

NOTE: Bearings are astronomic, derived  
 from Plan 16085.



CERTIFIED CORRECT  
 This 24 day of FEB, 1978.  
[Signature]  
 D.A. DUFFY, B.C.L.S.

Approved under the Land Registry Act  
 this 20 day of APRIL, 1978.

[Signature]  
 Approving Officer, City of Prince George

This plan lies within the Fraser-Fort George  
 Regional District.