

26-FF

PLAN NO. **24358**
 DEPOSITED IN THE LAND REGISTRY OFFICE
 AT PRINCE GEORGE ON THE **22** DAY OF
 --- **SEPT.** 1978

--- **E. T. Schooley**
 REGISTRAR



PLAN OF RIGHT OF WAY IN
 LOTS 13, 26, & 33 PLAN 17833
 D.L. 745 CARIBOO DISTRICT

SCALE: 1:2000 1cm. = 20 m.
 DISTANCES ARE IN METRES & DECIMALS THEREOF

BEARINGS ARE ASTRONOMIC DERIVED FROM PRINCE GEORGE GRID
 REFERRED TO LONGITUDE W 122° 32' 15"
 LATITUDE N 53° 54' 38"
 AND DERIVED FROM PLAN 17833.

LEGEND:

- IP ----- STANDARD IRON POST
- ----- DENOTING "OLD"

I, V. BARTELL OF THE CITY OF PRINCE GEORGE BRITISH COLUMBIA LAND SURVEYOR MAKE OATH AND SAY THAT, I WAS PRESENT AT AND DID PERSONALLY SUPERINTEND THE SURVEY REPRESENTED BY THIS PLAN AND THAT THE SURVEY AND PLAN ARE CORRECT. THE SAID SURVEY WAS COMPLETED ON THE **22** DAY OF September 1978.

Victor Bartell
 V. BARTELL B.C.L.S.

SWORN BEFORE ME AT PRINCE GEORGE THIS **22** DAY OF September 1978

[Signature]
 A COMMISSIONER FOR TAKING
 AFFIDAVITS FOR BRITISH COLUMBIA

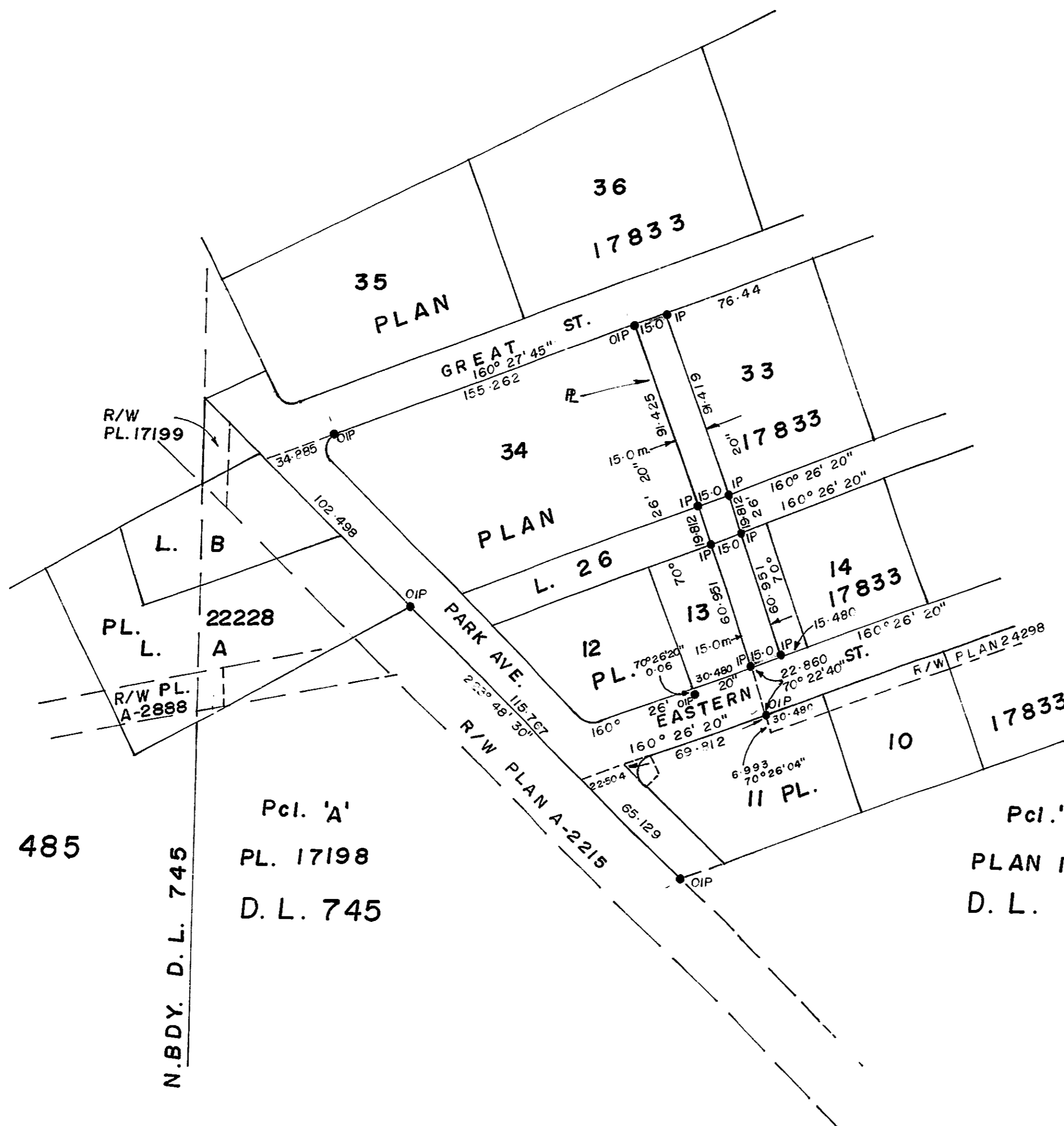
THIS PLAN LIES WITHIN THE FRASER FORT GEORGE REGIONAL DISTRICT.

D.L. 485

N.BDY. D.L. 745

Pcl. 'A'
 PL. 17198
 D.L. 745

Pcl. 'A'
 PLAN 17198
 D.L. 745



BOOK OF REFERENCE

DESCRIPTION (D.L. 745)	AREA
LOT 13 PLAN 17833	914 m ²
LOT 26 PLAN 17833	297 m ²
LOT 33 PLAN 17833	1371 m ²

Mc WILLIAM - WHYTE - GOBLE & ASSOCIATES
 B. C. LAND SURVEYORS
 PRINCE GEORGE - KAMLOOPS - SMITHERS
REF. NO. 78112

D.L. 745