

Plotted (KS)

20-120

PLAN OF SUBDIVISION OF PART OF
S.W. 1/4 DISTRICT LOT 818
CARIBOO DISTRICT - BRITISH COLUMBIA

SCALE: 1 : 1000

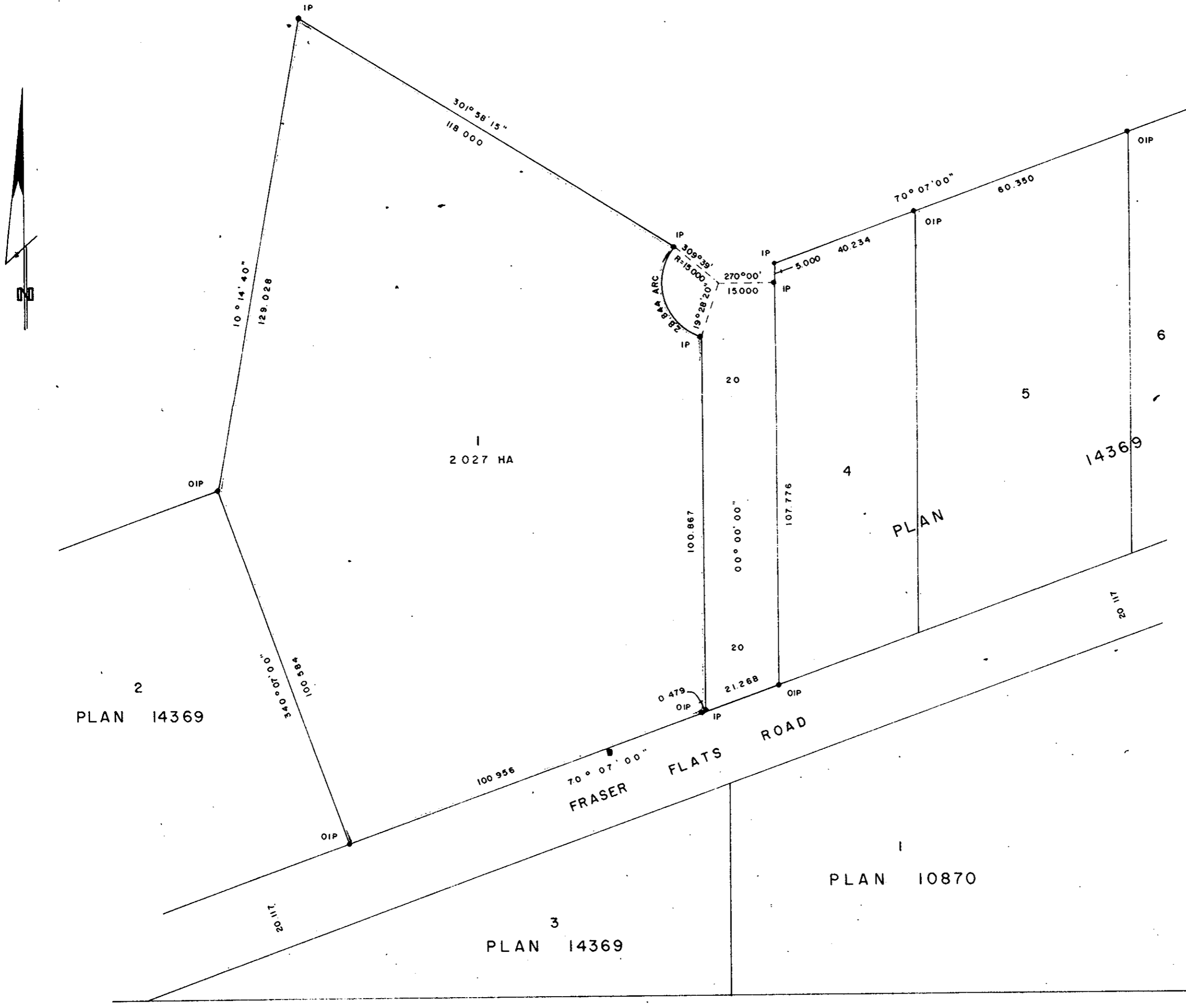
NOTE: Bearings are astronomic, derived from the
east boundary of Lot 2, Plan 14369.

LEGEND: • OIP denotes an old iron pin found.
• IP denotes an iron pin set.

PLAN No. 24353
Deposited in the Land Registry
Office at Prince George, B.C. this
27 day of SEPT., 1978

Registrar E.J. Schooley
ES

S.W. 1/4 D.L. 818



N.W. 1/4 D.L. 819

I, DONALD A. DUFFY of the City of Prince George,
a British Columbia Land Surveyor, make oath and say
that I was present at and did personally superintend
the survey represented by this plan and that the survey
and plan are correct. The said survey was completed
on the 25 day of Aug., 1978

[Signature]
B.C.L.S.

Sworn before me this 31
day of Aug., 1978

[Signature]
A Commissioner for taking Affidavits
for British Columbia.

ATLANTIC HOLDINGS LTD.

[Signature]
PRESIDENT

Mortgagee Atlantic Holdings Ltd.

Witness [Signature]

Approved under the Land Registry Act
this 22nd day of SEPT., 1978

[Signature]
Approving Officer, City of Prince George

This plan lies within the Fraser-Fort George
Regional District.