

24352

SD-914

No METRIC BASE MAP.

PLAN OF SUBDIVISION OF REMAINDER OF S.W. 1/4 OF NORTHERLY 40 CHAINS OF FRACTIONAL E. 1/2 OF DISTRICT LOT 823 CARIBOO DISTRICT-BRITISH COLUMBIA

SCALE: 1 : 2000

PLAN No 24352

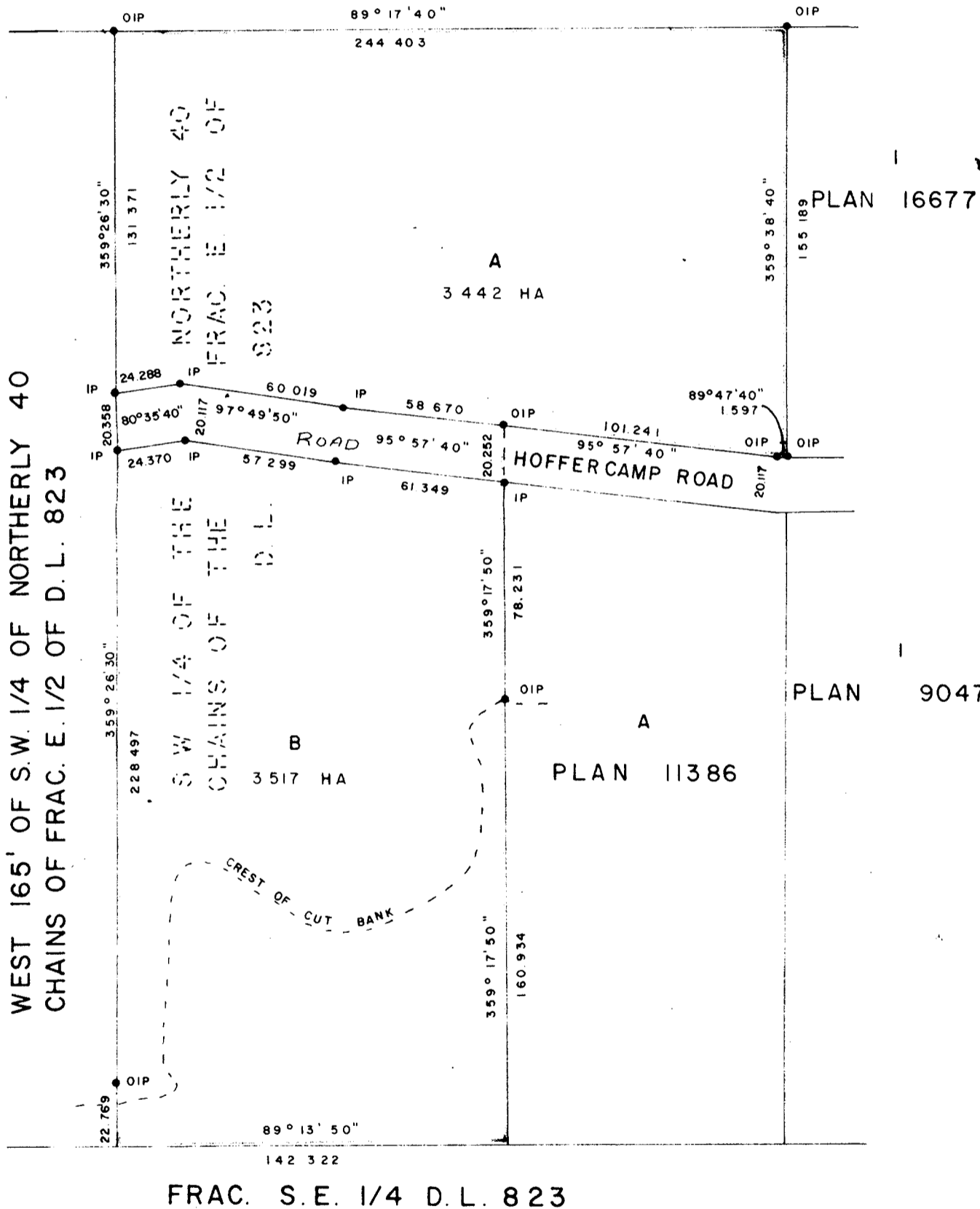
NOTE: Bearings are astronomic, derived from the east boundary of westerly 165' of Frac. E. 1/2 of D.L. 823, as shown on Plan 20438.

Deposited in the Land Registry Office at Prince George, B.C. this 27 day of SEPT., 1978

LEGEND: •OIP denotes an old iron pin found. •IP denotes an iron pin set.

Registrar E.T. Schooley

N.W. 1/4 OF N. 40 CHAINS OF FRAC. E. 1/2 OF D.L. 823



I, DONALD A DUFFY of the City of Prince George, a British Columbia Land Surveyor, make oath and say that I was present at and did personally superintend the survey represented by this plan and that the survey and plan are correct. The said survey was completed on the 7 day of August, 1978.

IDYLLIC ACTIVITIES INC.

Approved under the Land Registry Act this 1st day of SEPT., 1978

Eva Bernice Howard, President

C. E. Olsch, Approving Officer, City of Prince George

Sworn before me this 17 day of August, 1978

B.C.L.S.

This plan lies within the Fraser-Fort George Regional District.

A Commissioner for taking Affidavits for British Columbia

W. D. USHER & ASSOCIATES LAND SURVEYORS PRINCE GEORGE - B.C. LD 22 10089