

PLAN OF SUBDIVISION OF PART OF
N.E. 1/4 DISTRICT LOT 4046
CARIBOO DISTRICT - BRITISH COLUMBIA

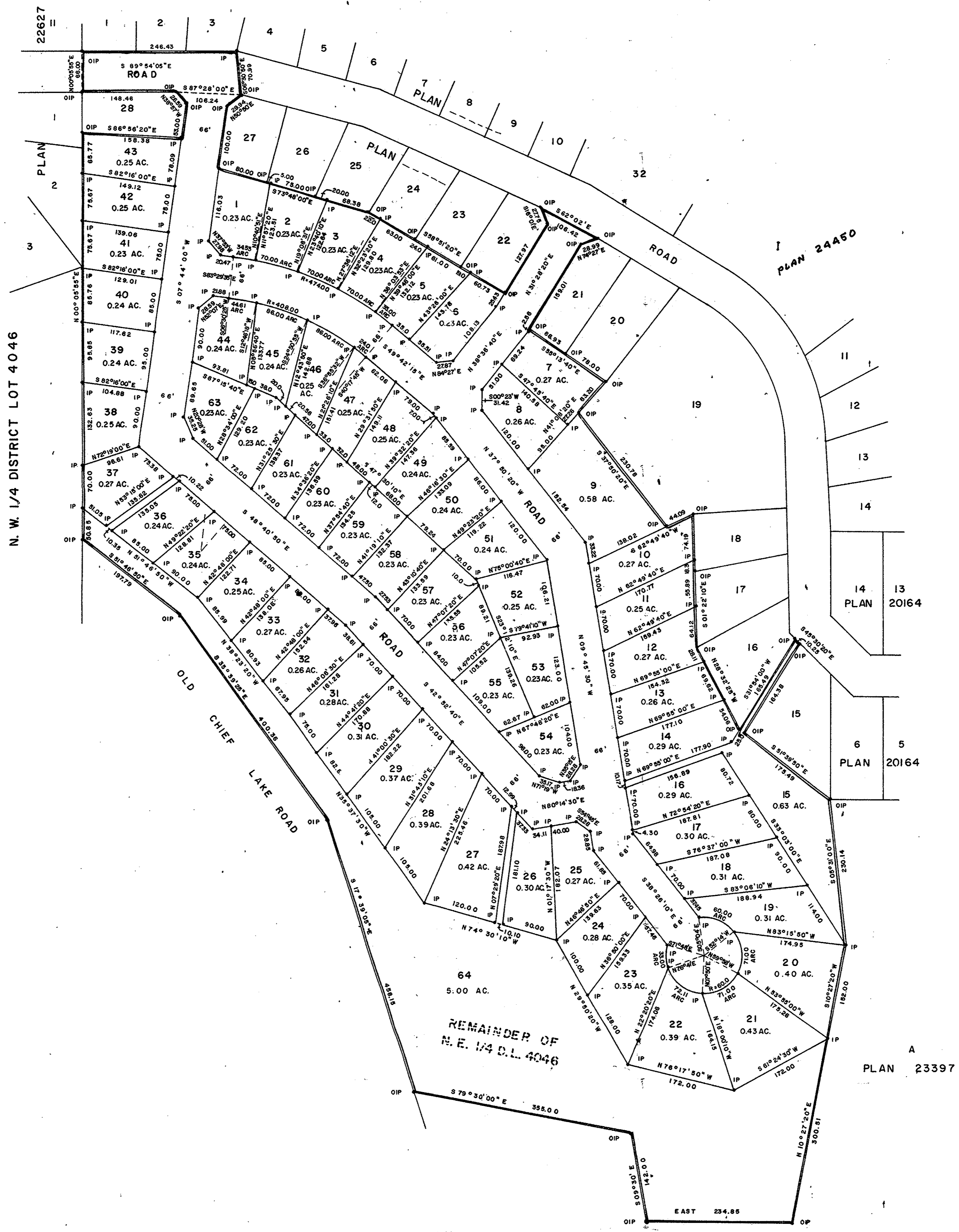
SCALE: 1" = 100'

NOTE: Bearings are astronomic, derived from the west boundary of N.E. 1/4 D.L. 4046 as shown on Plan 20360.

LEGEND: • OIP denotes an old iron pin found.
• IP denotes an iron pin set.

PLAN No. **24336**
Deposited in the Land Registry
Office at Prince George, B.C. this
20 day of Sept., 1978.

E. L. Schooley
Registrar



I, DONALD A. DUFFY of the City of Prince George, a British Columbia Land Surveyor, make oath and say that I was present at and did personally superintend the survey represented by this plan and that the survey and plan are correct. The said survey was completed on the 12 day of June, 1978.

[Signature]
B.C.L.S.

ARROW LANDCO LTD.

BANK OF MONTREAL
by its attorneys
[Signature]
Assistant Manager Credit

Approved under the Land Registry Act
this 25 day of Aug., 1978.

[Signature]
Approving Officer, City of Prince George

Sworn before me this 1